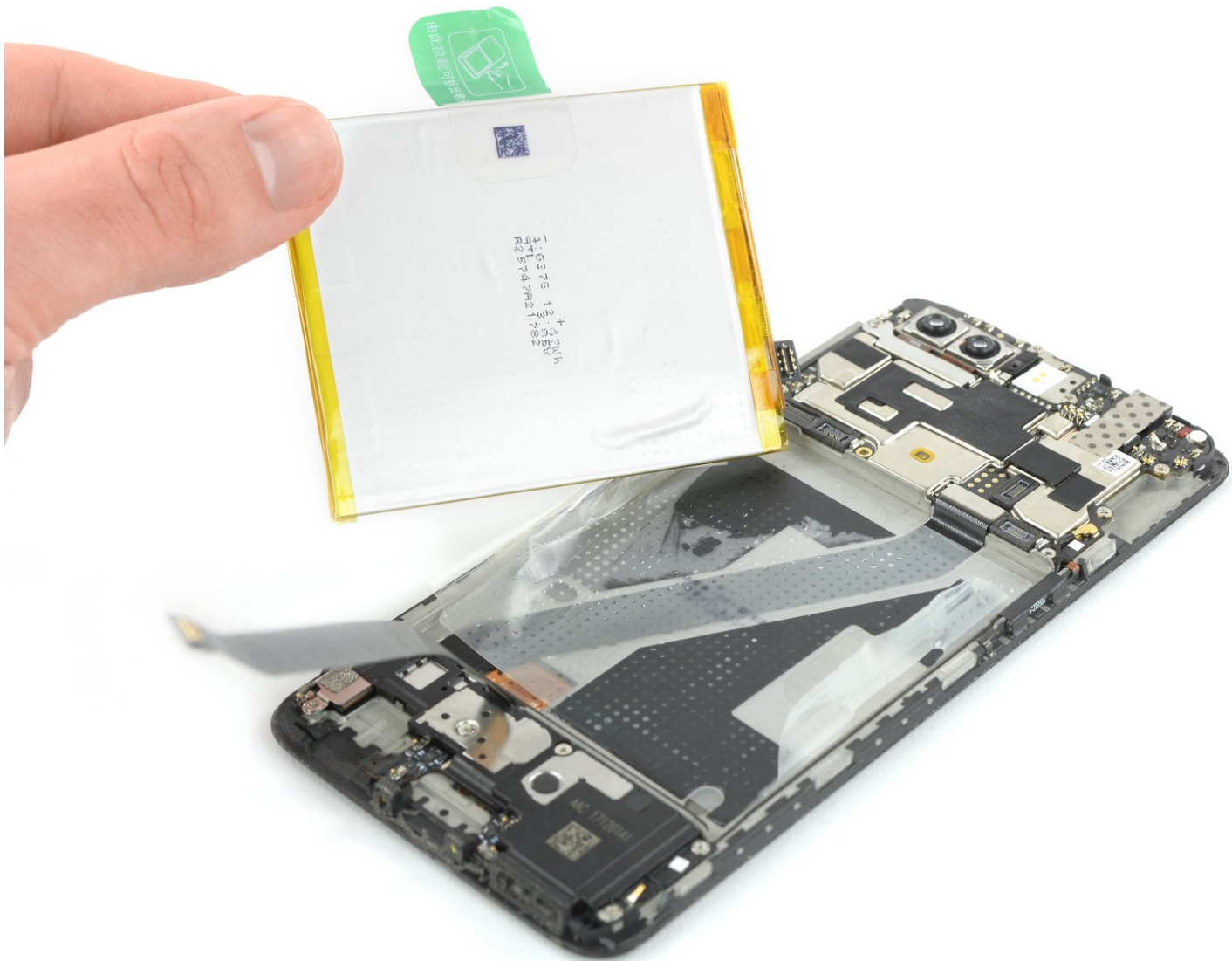




OnePlus 5T Battery Replacement

Use this guide to replace a worn-out or dead...

Written By: Dominik Schnabelrauch



INTRODUCTION

Use this guide to replace a worn-out or dead battery in your OnePlus 5T.

If your battery is swollen, [take appropriate precautions](#). **For your safety, discharge your battery below 25% before disassembling your phone.** This reduces the risk of a dangerous thermal event if the battery is accidentally damaged during the repair.

You'll need **replacement adhesive** to reattach components when reassembling the device.



TOOLS:

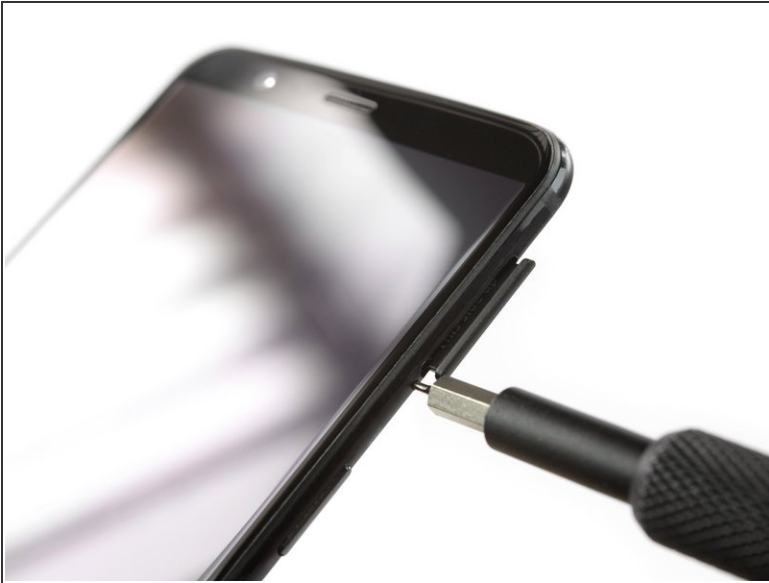
- [Tweezers](#) (1)
- [SIM Card Eject Tool](#) (1)
- [Spudger](#) (1)
- [iFixit Opening Tool](#) (1)
- [iFixit Opening Picks \(Set of 6\)](#) (1)
- [Phillips #00 Screwdriver](#) (1)
- [T2 Torx Screwdriver](#) (1)



PARTS:

- [OnePlus 5/5T Replacement Battery](#) (1)

Step 1 — Back Cover



- Before you begin, switch off your phone.
- Remove the SIM card tray.

Step 2



- Remove the two Torx T2 screws (2.5 mm length).
- The OnePlus 5T doesn't use a lot of adhesive to secure the backcover, however the clamps are very strong and require some force during the opening procedure.

Step 3



- Insert an opening tool between the display and the backcover at the bottom end of the phone.
- Use the opening tool to create a gap between back cover and display.
- Insert an opening pick in the gap you created with the opening tool.

Step 4



- Slide the opening pick to the bottom right corner of the phone.
- Insert a second opening pick and slide it to the bottom left corner of the phone.

Step 5



- Slide the opening pick around the bottom left corner and then up along the left edge of the phone to open the plastic clamps that secure the backcover.

Step 6



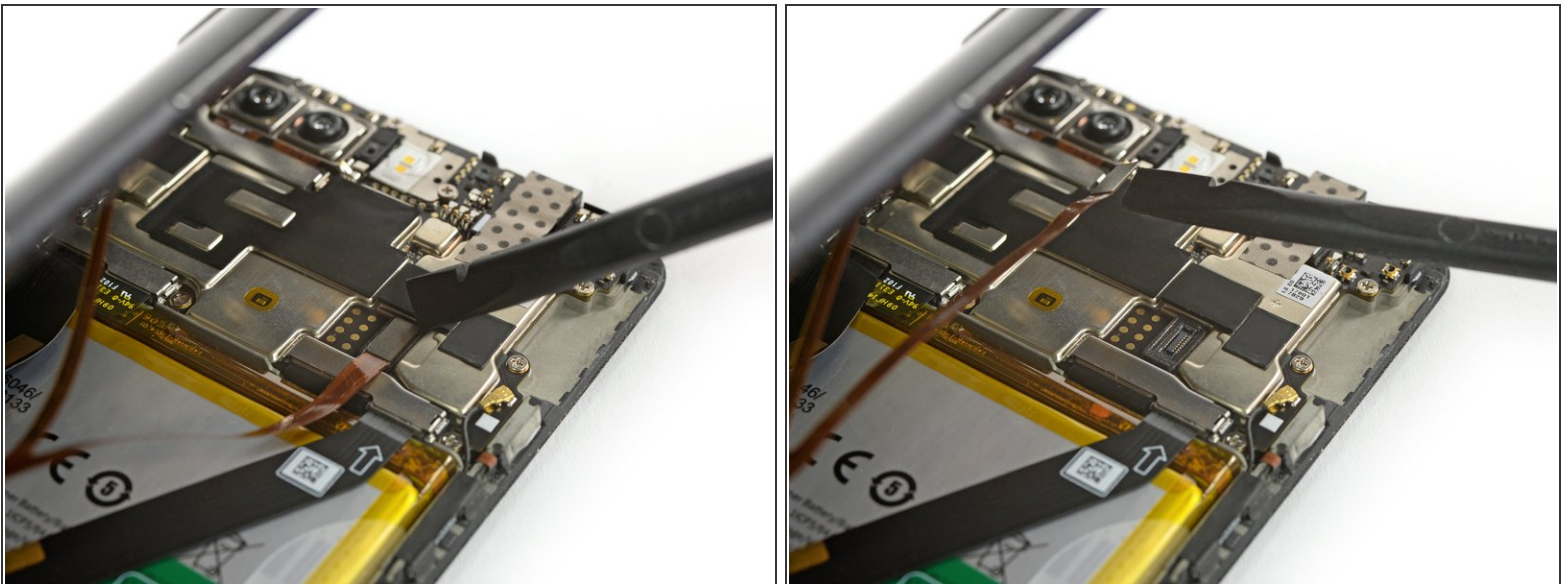
- Slide the opening pick around the bottom right corner and then up along the right edge of the phone to open the plastic clamps that secure the backcover.

Step 7



- Try not to remove the backcover all the way yet. The fingerprint and the charging port and headphone flex cables are still connected to the motherboard.
- Flip your phone and carefully lift the bottom end of the backcover away from the phone assembly. Fold it to left and hold it at an 80° angle.

Step 8



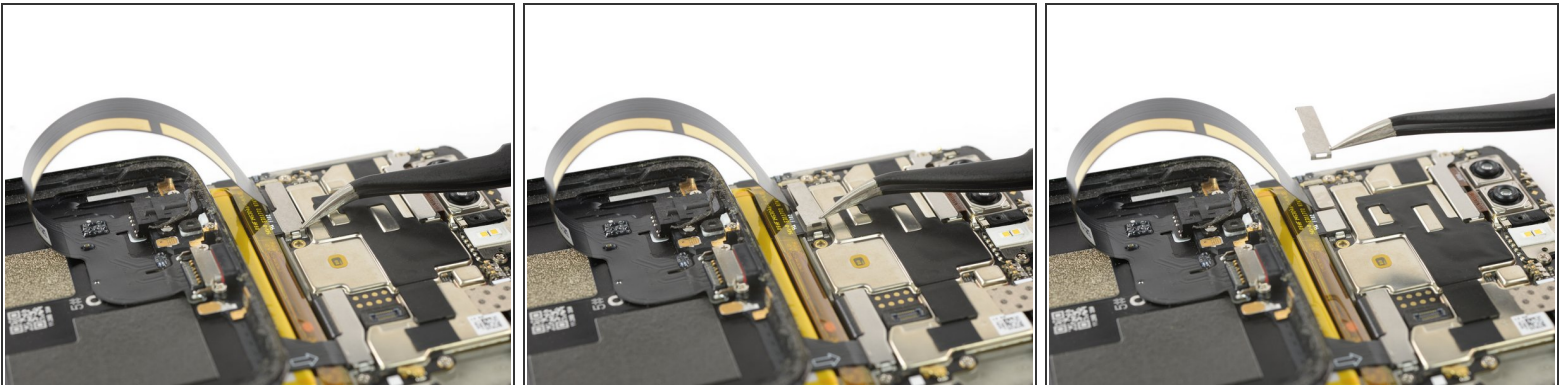
- Use a spudger to pry up and disconnect the fingerprint flex cable.

Step 9



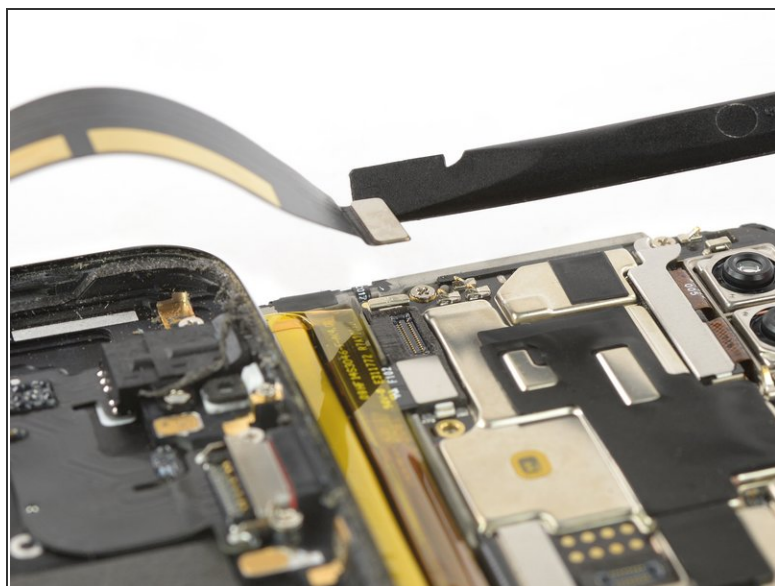
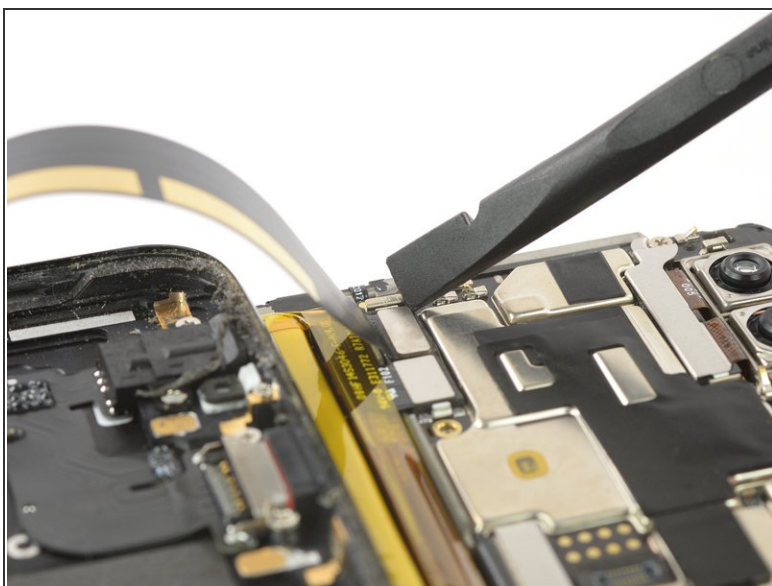
- Twist the backcover around 180° and lay it down to align the bottom end of the backcover the top edge of the battery.

Step 10



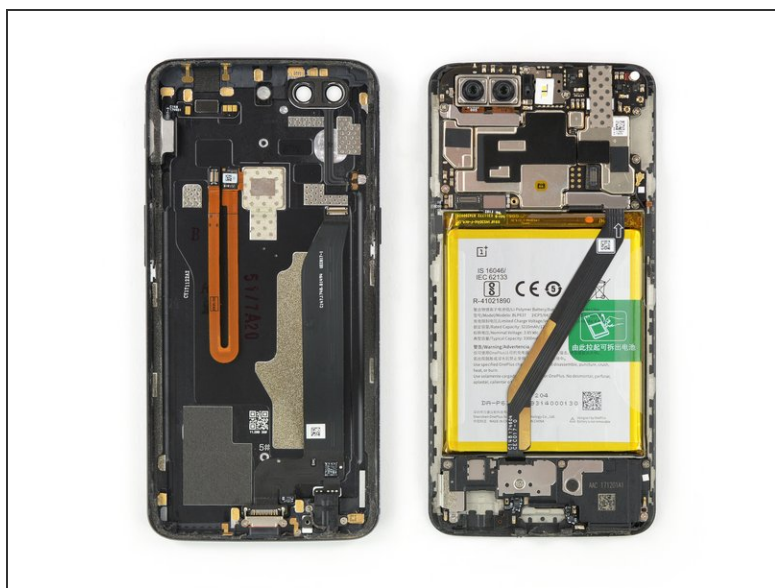
- Use a pair of tweezers to remove the small metal shield which covers the battery and the charging port and headphone jack flex cable connectors.

Step 11



- Use a spudger to pry up and disconnect the charging port and headphone jack flex cable.

Step 12



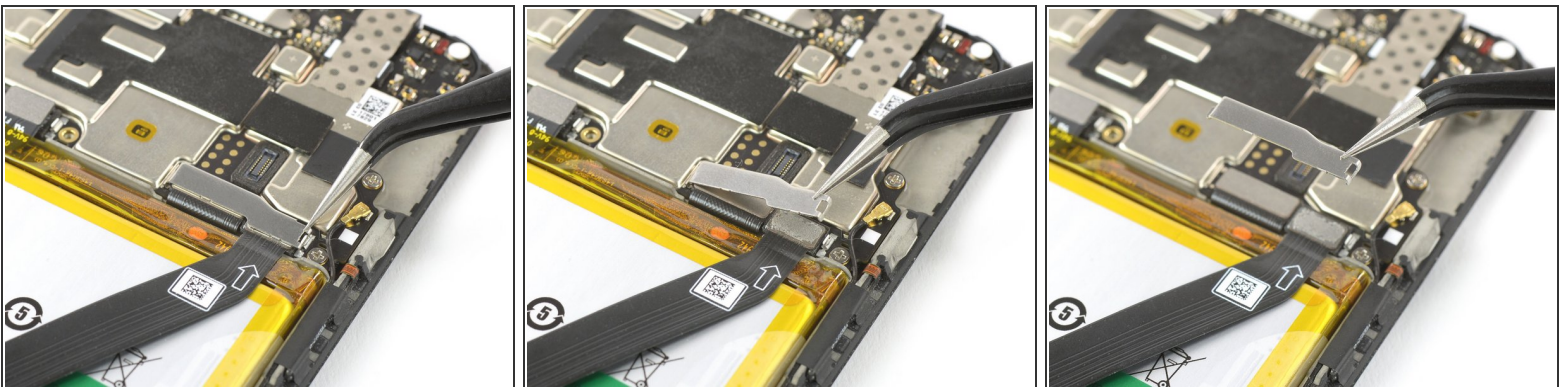
- Remove the backcover.

Step 13 — Battery Disconnect



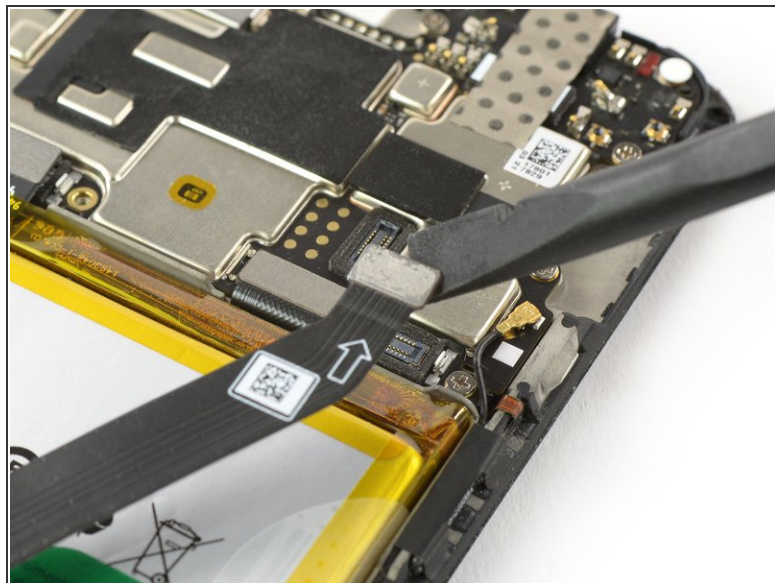
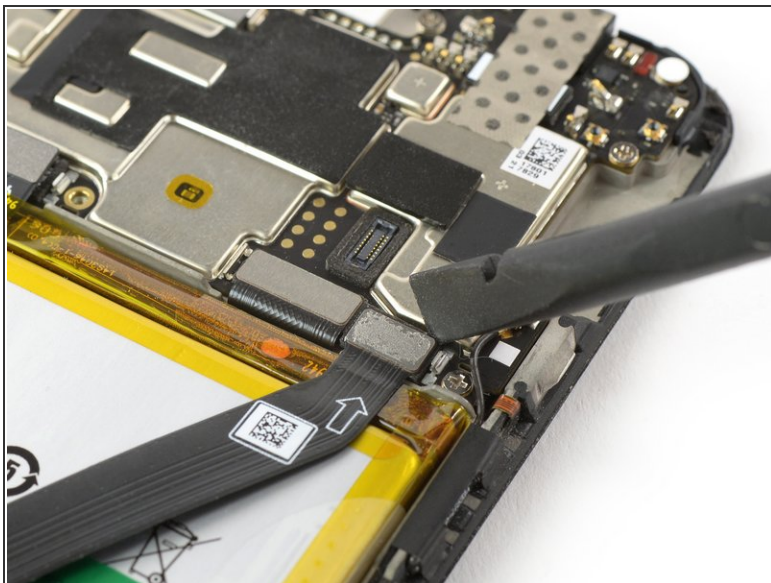
- Use a spudger to pry up and disconnect the battery flex cable.

Step 14 — Upper Main Flex Connector Disconnect



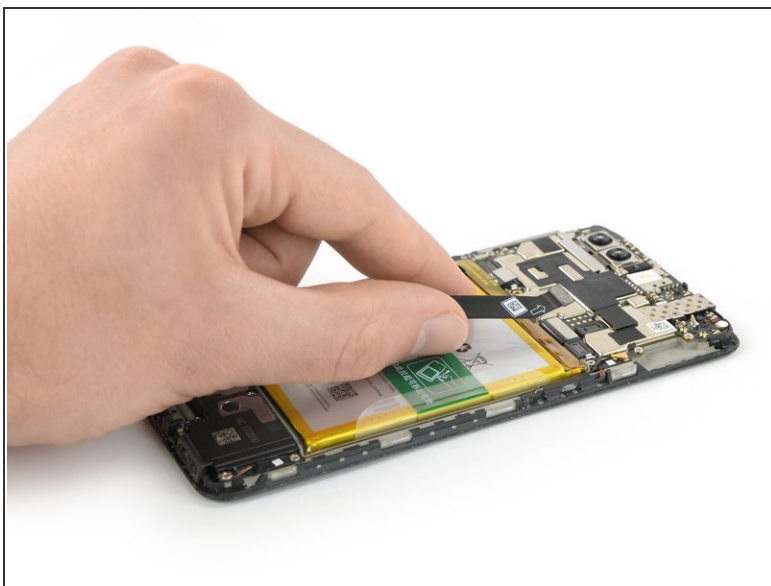
- Use a pair of tweezers to unhook and remove the small metal shield that covers the main and interconnect flex cable connectors.
- ❗ The metal shield is held in place by mild adhesive. In case you're having trouble removing it, you can apply [a heated iOpener](#) to loosen the adhesive underneath.

Step 15



- Use a spudger to pry up and disconnect the main flex cable.

Step 16 — Battery



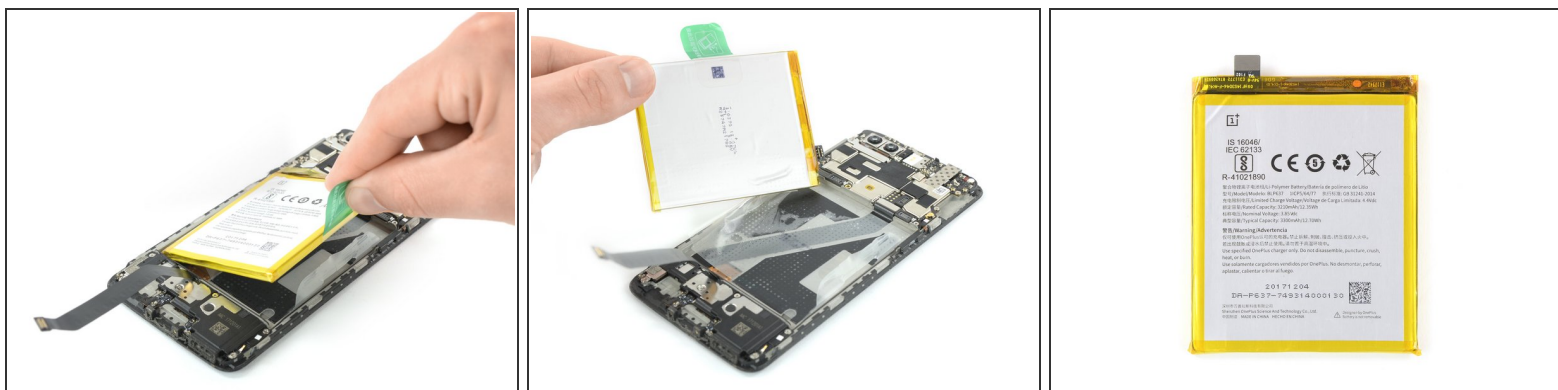
- Fold the main flex cable out of your way to get better access to the battery.

Step 17



- Peel the green adhesive strip off the battery.

Step 18



- Pull up the green adhesive strip to lift the battery out of its recess.
- ❗ Although this kind of adhesive tab is supposed to make the battery removal easier, it may require some force. In case you're having trouble removing the battery, you can apply [a heated iOpener](#) to the center of the display, to loosen the adhesive underneath.
- Swing the battery up to an upright position.
- Peel the battery off the remaining adhesive.
- Remove the battery.
- ✦ During re-assembly, temporarily re-connect the battery to the motherboard to help align it correctly. Disconnect the battery after it is seated.

Step 19



- Peel the battery's adhesive sticker off the midframe.
 - ❗ Although it isn't mandatory to remove the adhesive sticker it is highly recommended to use a fresh one, when installing a new battery.

To reassemble your device, follow these instructions in reverse order. Apply new adhesive where necessary after cleaning the relevant areas with isopropyl alcohol (>90%).

For optimal performance, **[calibrate](#) your newly installed battery**: Charge it to 100%, and keep charging it for at least two more hours. Then, use it until it shuts off due to low battery. Finally, charge it uninterrupted to 100%.

Take your e-waste to an [R2 or e-Stewards certified recycler](#).

Repair didn't go as planned? Check out our [Answers community](#) for troubleshooting help.