



# Olympus PEN E-P5 LCD Replacement

Replace your E-P5 cracked LCD

Written By: Gabriel Marcelli



# INTRODUCTION

Is your LCD Screen cracked or unresponsive? Use this guide to replace it.

Please note: this requires some skills removing and sticking back again adhesive strips. If available, keep some thin biadhesive suitable for electronics at hand, could be necessary for reassembly.



## TOOLS:

- [Phillips #00 Screwdriver](#) (1)
- [Tweezers](#) (1)
- [Hair Dryer](#) (1)
- [Spudger](#) (1)



## PARTS:

- [LCD screen for Olympus E-P5 \(or E-M10 Mark II\)](#) (1)

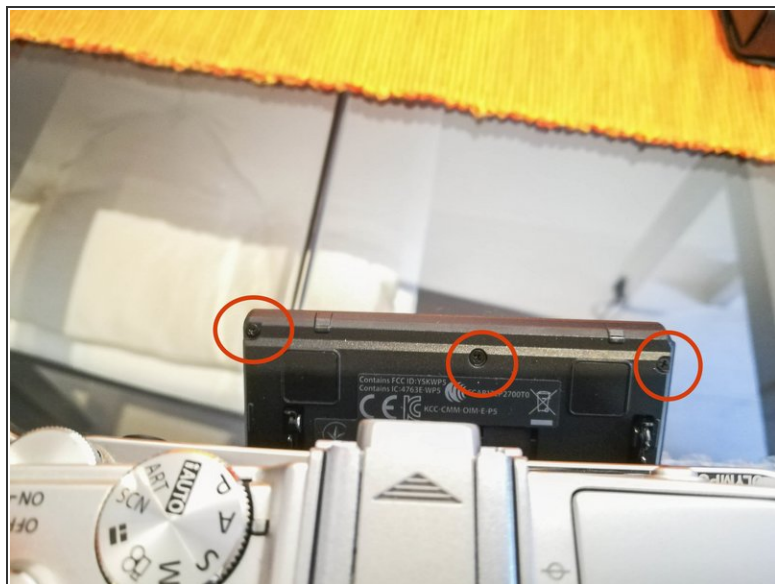
*Sourceable from Aliexpress*

## Step 1 — Battery



- Remove battery before starting disassembly.

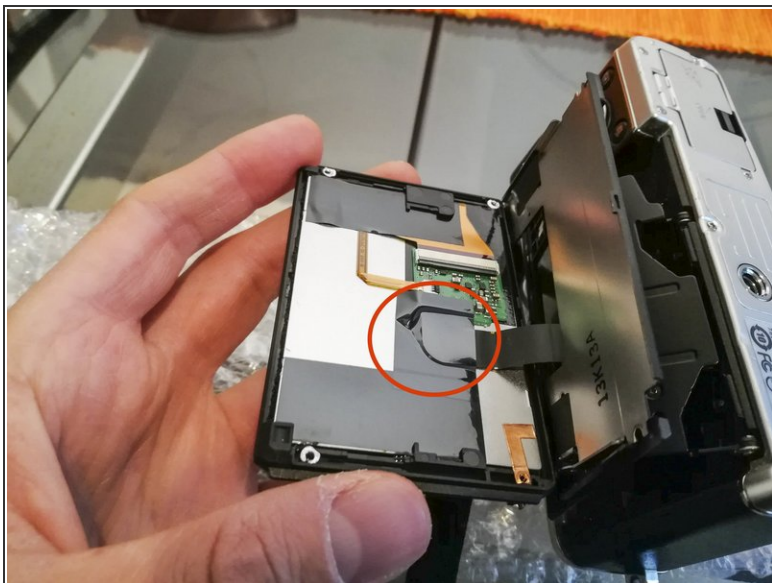
## Step 2 — LCD assembly



- Use a Phillips #00 screwdriver to remove 5 screws, two from the base of the assembly and 3 from the top.



## Step 3



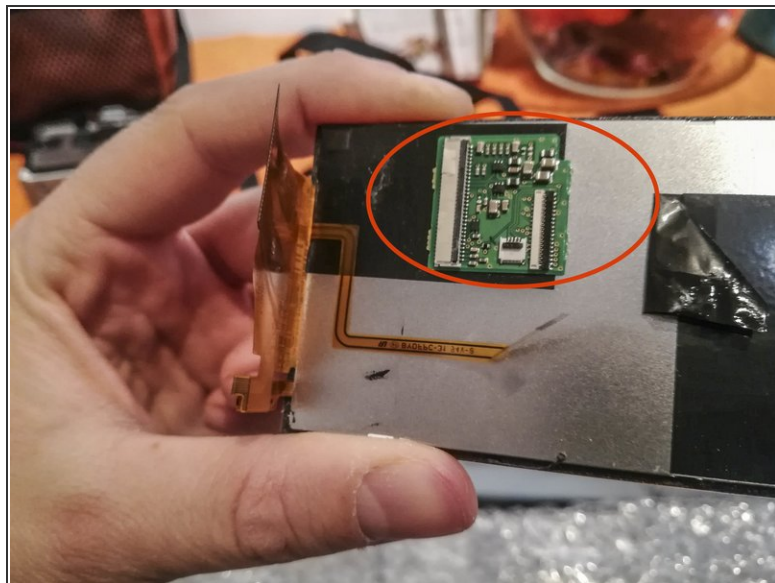
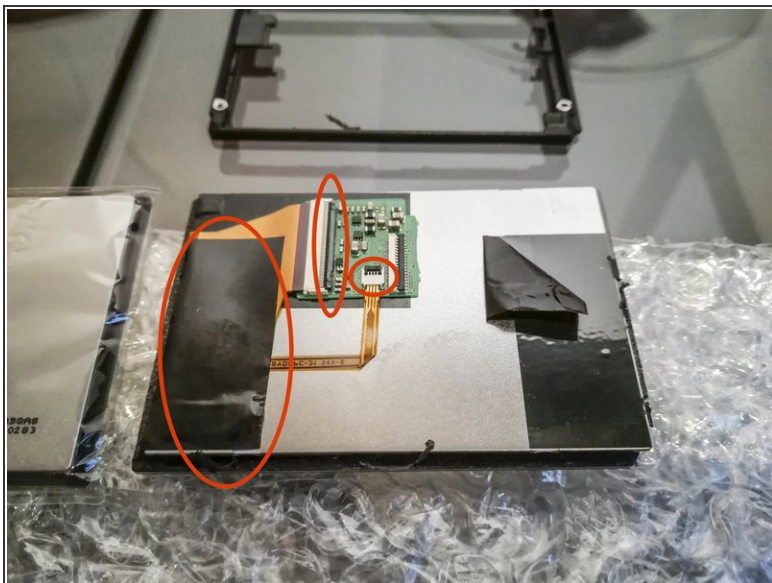
- Use tweezers to peel back the plastic adhesive cover
- Use a spudger to flip back the black bar on the LCD Ribbon ZIF connector
- Gently pull the ribbon cable out with tweezers
- Remove the LCD assembly from the camera body

## Step 4 — Remove LCD from frame



- Peel back the small copper tab from top right LCD corner
- Gently remove the plastic frame from the LCD (kept together with some glue). Use a spudger if needed.

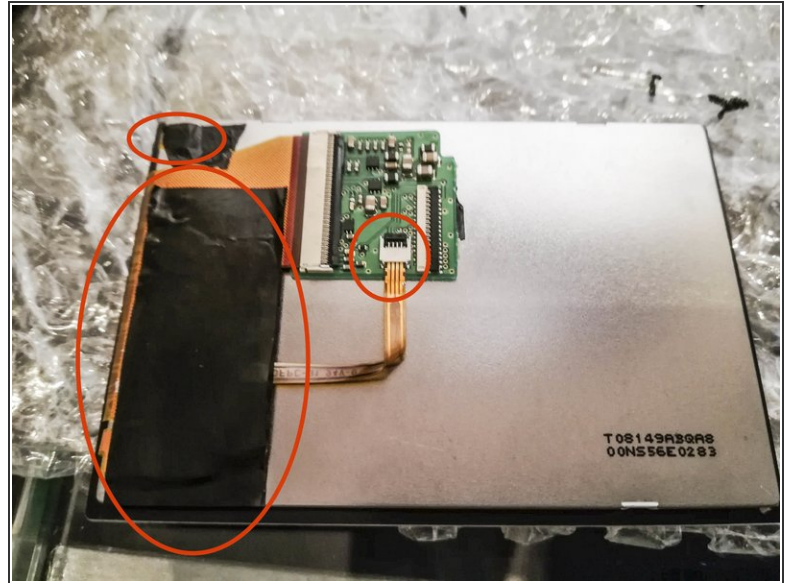
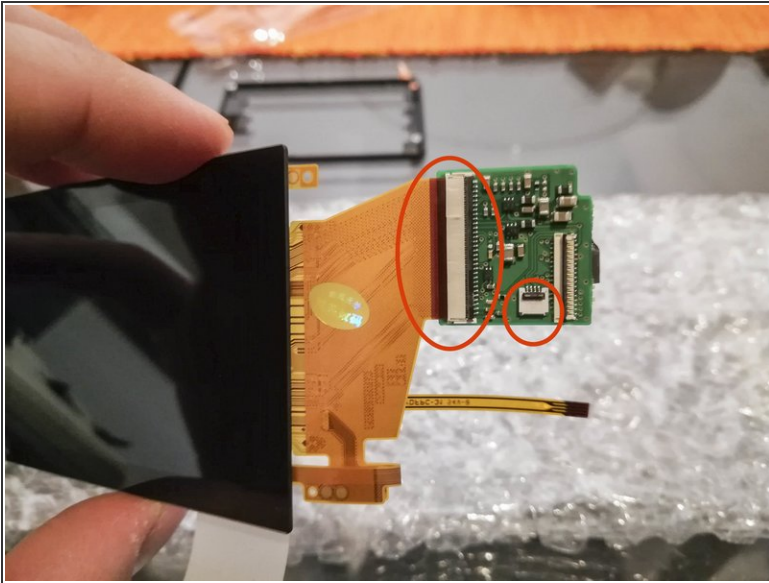
## Step 5 — Remove the IC with ZIF connectors from damaged LCD screen



- Use tweezers to peel back the plastic adhesive strip covering the ribbon cable
- Use a spudger to flip back the black bar from both the ZIF connectors
- Gently pull out the big and the small ribbon cables with tweezers
- Use a hair dryer to loosen the strength of the black biadhesive strip under the IC containing the three ZIF connectors
- **VERY GENTLY** use a spudger and/or nails to remove the black biadhesive strip and the green IC. Don't force the IC since you'll need it to reassemble your device. Leave the biadhesive under the green IC once removed.



## Step 6 — IC reassembly on new LCD screen



- Unpack the new LCD screen
- Insert the big ribbon cable into its ZIF connector and flip the black bar back in its original position. The cable should be held firmly.
- Insert the small ribbon cable into smaller ZIF connector and flip back the black bar in the closed position. Do not force the cable.
- Stick the green IC to the back plate using the biadhesive strip from the original LCD.
- Use an adhesive strip from the original LCD to hold the ribbon cables to the back plate.
- Use another piece of black adhesive strip to stick the small ribbon tab on the top left corner of the back plate.

To reassemble your device, follow these instructions in reverse order from step 4.