



# Lenovo Yoga 720 SSD Replacement

This guide will show how to replace the SSD.

Written By: Aiden



# INTRODUCTION

This guide will show how to replace the SSD.



## TOOLS:

- [T5 Torx Screwdriver](#) (1)
- [iFixit Opening Tool](#) (1)
- [JIS #1](#) (1)
- [Tweezers](#) (1)





## PARTS:

- [Crucial P5 3D NAND PCIe M.2 SSD](#) (1)





## Step 1 — Bottom Cover



-  Before you begin, be sure to turn off your laptop and discharge the battery down to 25%.
-  Start by flipping the device over so that you see the screws.
  - Remove seven Torx T5 short screws.
  - Remove three Torx T5 long screws.

## Step 2



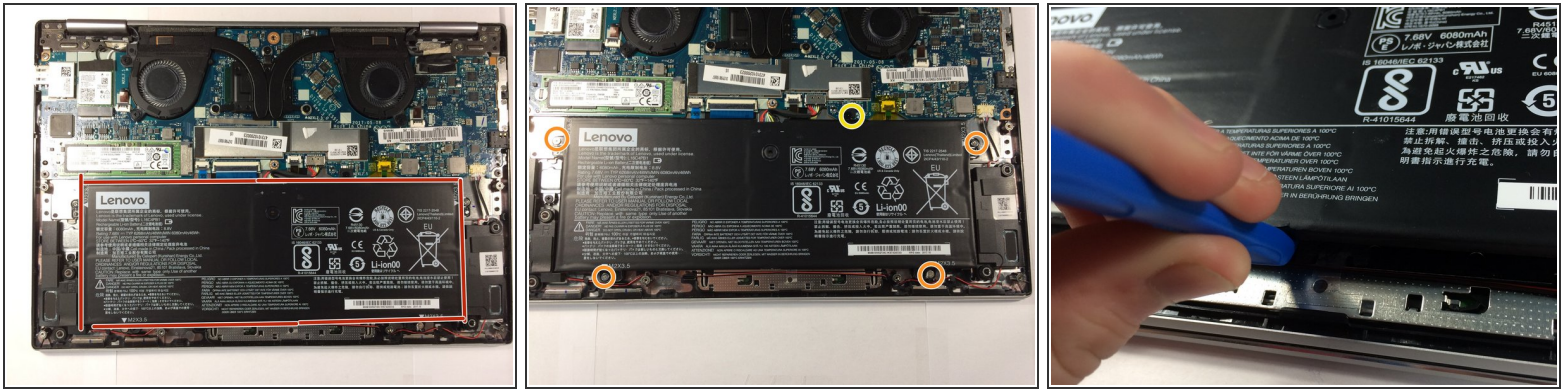
- Starting from the USB port, use your opening tool to gently pry up the case .
-  Make sure you are prying on the cover itself, not the metal shield around the USB port.
- Pry along the laptop in the order shown by the arrows.
-  Do NOT pry along the top side, or you risk damaging the casing. Stay with the arrows.

## Step 3



- Lift the case from the bottom side. NOT the side with the hinges.  
**⚠ When you feel resistance, do NOT keep lifting or you will damage the housing.**
- Once you feel resistance, gently pull the case towards you. (away from the hinges.)
- Remove the case.

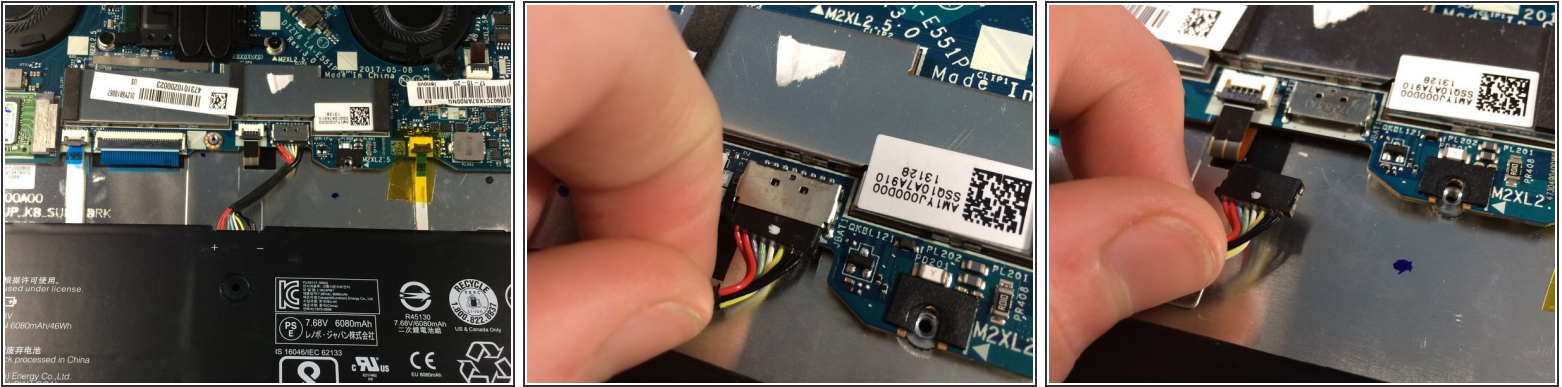
## Step 4 — Battery



- This is the battery. For guides that are for other parts, the battery is removed for the reason of it being a pain to connect or disconnect while screwed in.
  - ⚠ Be careful not to short anything on the motherboard, as the battery cannot be disconnected before removal.
- Remove four [J1 Philips screws](#).
- Remove one J1 philips screw.
  - ⓘ Do not mix these screws up. If you put the longer screw where the shorter screw belongs, you will damage the shield around the keyboard.
- Lift the battery slightly using your plastic opening tool.
  - ⚠ Do not lift the battery out all the way, as it is still connected to the motherboard.
  - ⚠ Do NOT puncture or deform the battery or it may catch fire or even explode.



## Step 5



- Pull the battery towards you until the wire is accessible.
- gently tug and wiggle on the wire until it pops out.
- Remove the battery.

## Step 6 — SSD



- This is the SSD
- remove the warranty sticker
- ⓘ Removing the warranty sticker and placing it back after may still void your warranty.
- ~~Remove 1 J1 Screw holding the SSD~~ Remove the screw holding the SSD.
- ⓘ Update! I removed the size due to a lot of people having issue with stripping the screw when using the suggested size. I will look at this again when I have time. sorry for the inconvenience this caused many of you. use what you think works best here.

## Step 7



- Slightly lift the rear of the SSD
  - ⚠ If you lift too far you could damage the motherboard connector or the SSD.
- Gently pull it out.

To reassemble your device, follow these instructions in reverse order.