



Two Piece Hockey Stick Repair

How to take a broken one piece hockey stick and turn it into a functional two piece.

Written By: Cameron Hardiek



INTRODUCTION

How to take a broken one piece hockey stick and turn it into a functional two piece.



TOOLS:

- [Heat Gun](#) (1)
 - [Hack saw](#) (1)
 - [Sharpie](#) (1)
-

Step 1 — Hockey Stick



- Identify a composite hockey stick with a broken blade or lower shaft. The stick must be broken below the point where the stick tapers. If it is above this point the repair is not feasible and the stick must be discarded.

Step 2



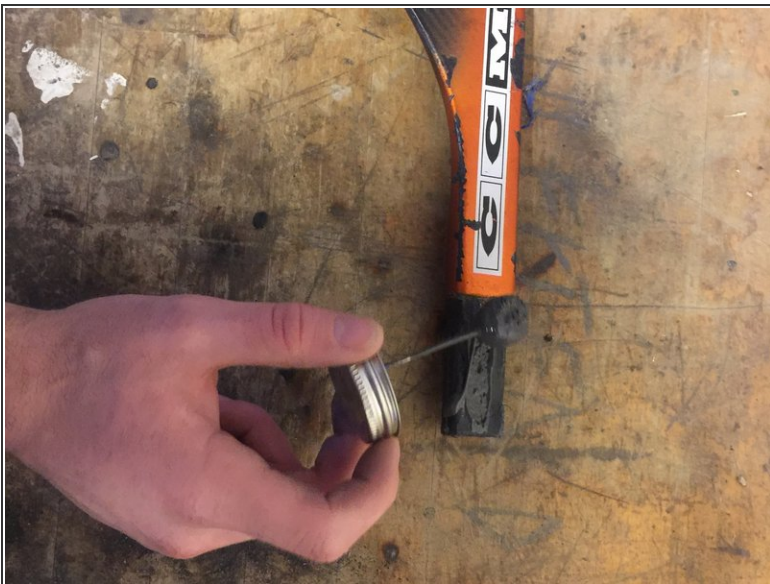
- Mark with a sharpie on the stick where the blade begins to taper. This where the cut will be made.

Step 3



- Use a hack saw to cut the stick off at the previously made mark.
- ⚠ Blade is sharp. Hack saws are potentially dangerous to operate. Make sure the cutting area is clear and keep hands away from blade.
- ℹ It is recommended to take the stick to a local hockey store where they will generally perform this service for free.

Step 4



- Apply glue to the portion of the replacement blade that will be inserted into the shaft. Apply enough to make an even coat.

Step 5



- Warm up the glue until melted into a syrupy liquid.

⚠ Hairdryers and heat guns can cause burns if not used properly. Avoid direct skin contact with hot portions of the heat gun and the melted glue.

⚠ Heat gun can start fires. Keep aerosols and flammable materials clear of work area.

Step 6



- Insert the gluey end of the replacement blade into the composite shaft.

ⓘ The glue is heat sensitive and will harden when cooled. Insert before the glue dries.

Step 7




- Wipe away excess glue using a disposable cloth or towel.

Step 8



- Let the newly assembled stick sit until cooled.

 Approximately one hour required to cool.

 Do not use the stick until fully cooled, the blade may fly off, causing injury to the user or nearby persons.

Step 9



- Dangle, snipe, celly.