



iPhone dock Teardown

This teardown will show step by step a...

Written By: Nathan



INTRODUCTION

This teardown will show step by step a disassembly of the Apple iPhone dock. Hope you enjoy!

TOOLS:

[Jimmy](#) (1)

[iFixit Opening Picks \(Set of 6\)](#) (1)

[Phillips #00 Screwdriver](#) (1)

Step 1 — Getting started



- Start by flipping the dock upside down.

Step 2 — Removing the back



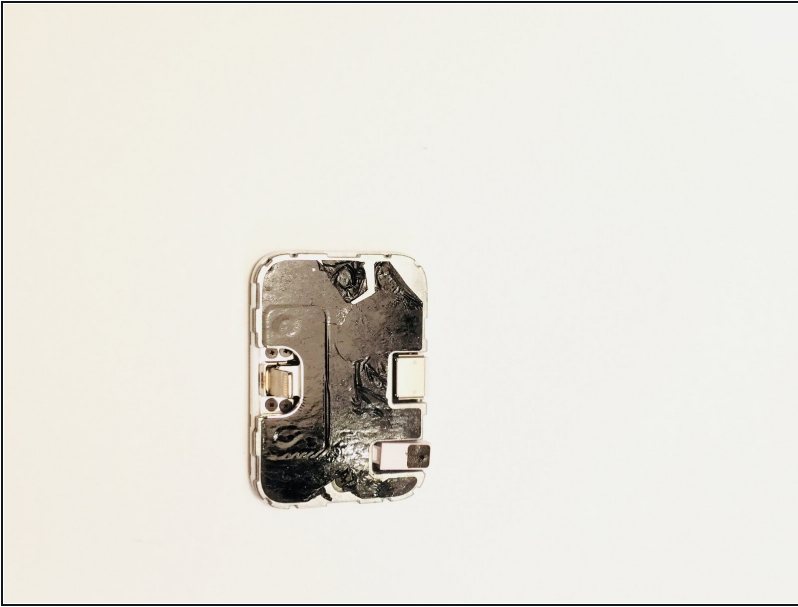
- Take your [Jimmy](#) and push it in between the bottom cover and the body. Push down to lift the bottom cover.

Step 3 — Getting the back off



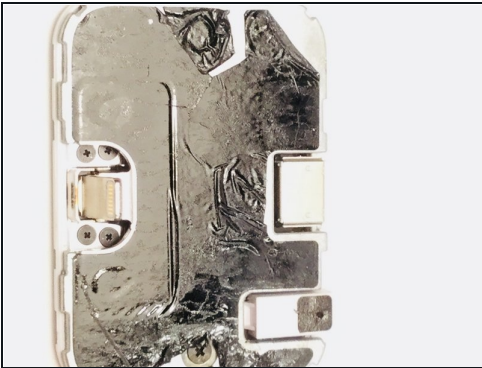
- Carefully remove the clips on the side by pushing up with the Jimmy. If needed, use the plastic Opening Picks to keep the back piece from popping back into place.

Step 4 — Looking at the dock



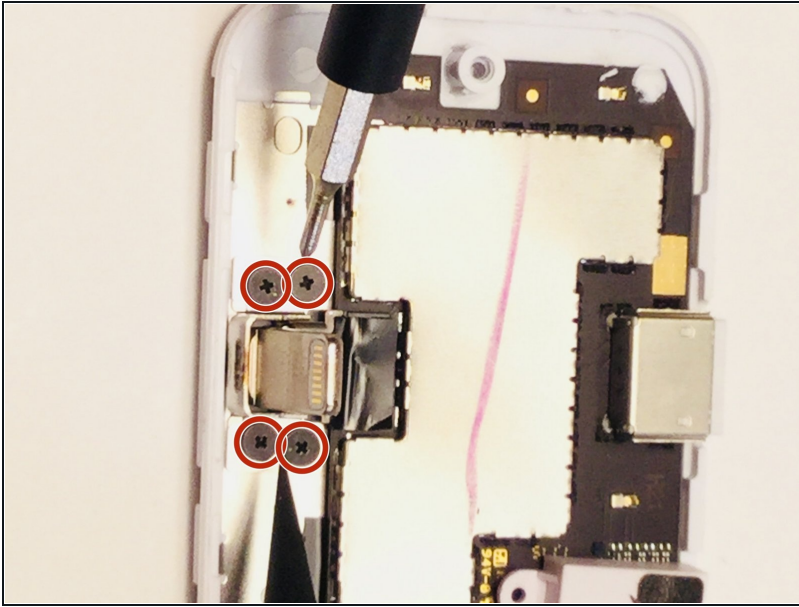
- Remove the dock completely from the plastic frame.

Step 5 — Peeling back the black sticker



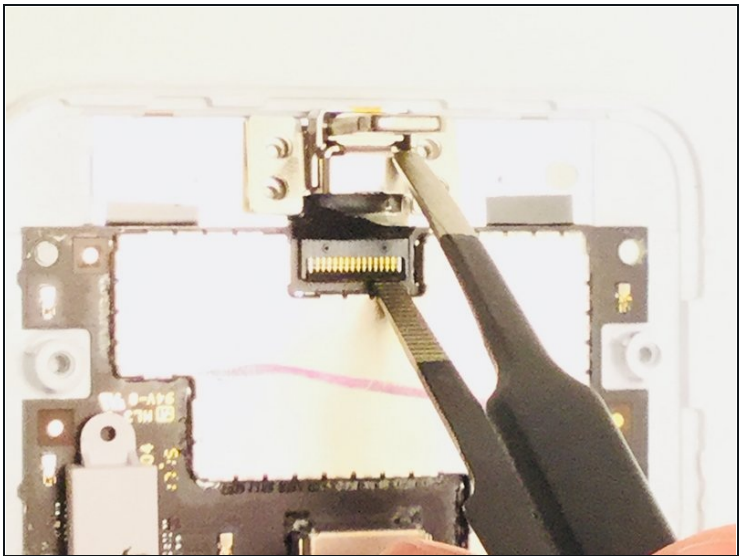
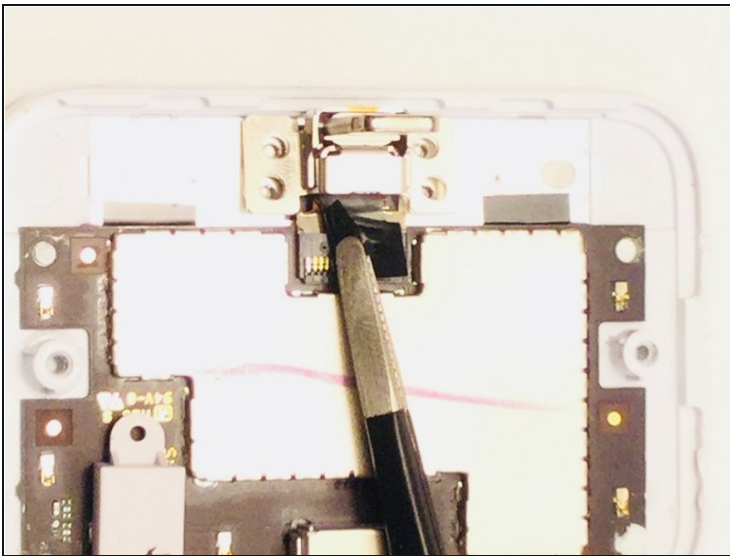
- The silver adhesive is covering two Phillips screws at opposite ends of the dock. Peel back the adhesive on these areas and remove both screws.

Step 6 — Removing four Phillips 000 screws



- Remove the back plate once the screws are out.
- Remove four Phillips #000 screws surrounding the Lightning connector.

Step 7 — Removing the Lightning connector



- A similar adhesive can be found covering the plug for the Lightning connector. Peel the adhesive back and gently lift the cable to disconnect the connector.