



Linksys WRT54G2 V1 Teardown

My second teardown. I take apart a router.

Written By: Aiden



INTRODUCTION

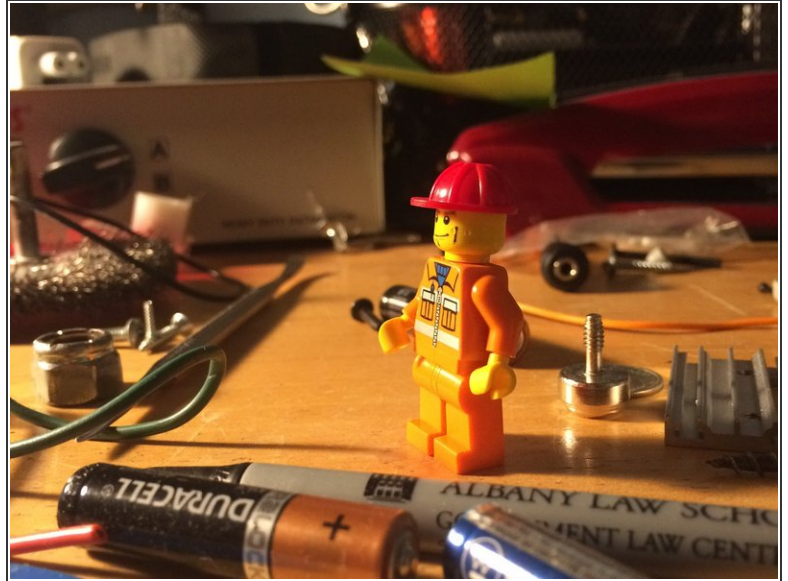
I am tearing down a router!

TOOLS:

- [iFixit Opening Tools](#) (1)
- [TR10 Torx Security Screwdriver](#) (1)
- [Lego Minifigure](#) (1)

Construction Worker

Step 1 — Getting Ready!



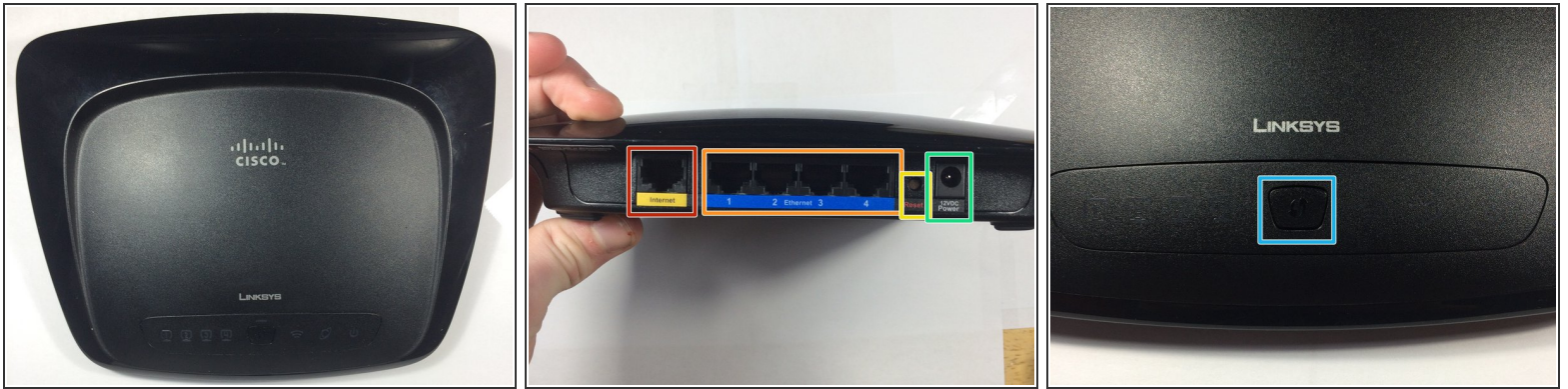
- looks like my desk is a mess! Time to [clean up](#)!
- ⓘ This may take a while.

Step 2



- Much Better.
- The lighting looks good with [minifigure](#) holding a spudger.
- ⚠ Do not attempt to make a minifigure hold a spudger. he could fall over and get hurt.


Step 3 — Actually being productive.



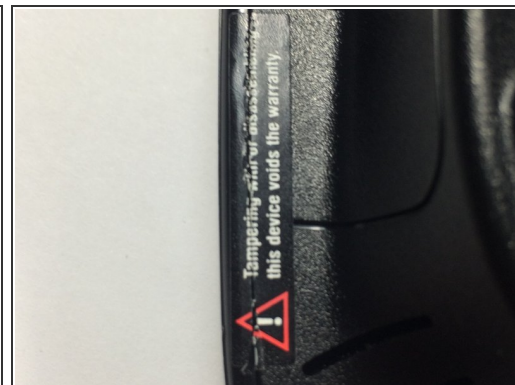
- this is the linksys WRT54G2 V1.
- The Internet in jack.
- The 4 Ethernet out jacks
- One reset button.
- One 12 Volt DC .5 amp inlet.
- 1 WPS button.

Step 4 — Taking it apart!



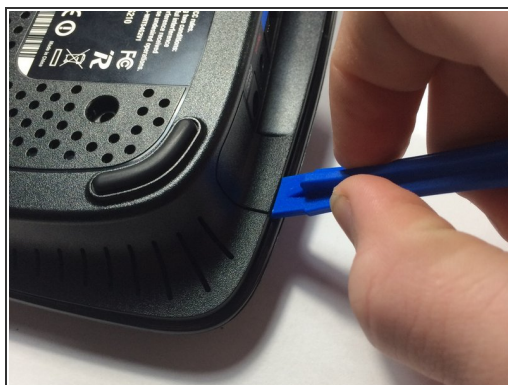
- This is the back of the router. and 4 of its screws must be removed
- WHAT IS THIS? [A new screw!](#)
-  Nothing but the best equipment to tackle this! [@kelsea](#) recommended I should use my tools more.

Step 5 — Resistance



- I feel a disturbance in this repair...
- AHA! its darth voider! WE MUST DESTROY HIM!
- iFixit emerges once again! [VICTORY!](#)

Step 6 — Back to your regularly scheduled programming



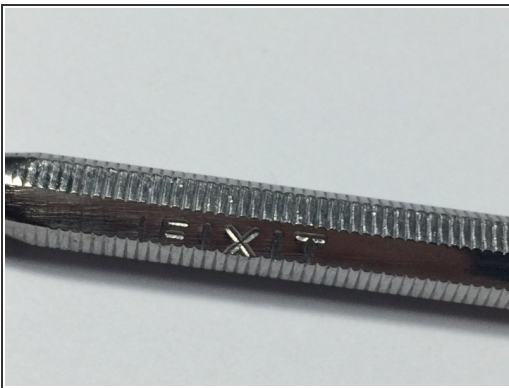
- How do we open this? Rip it open? No... As tempting as that is there must be a more elegant way...
- iFixit tools are elegant right? Use a [iFixit Opening Tool](#) to do the trick. mostly in the back corners.
- ① The cover seems to pop back with nothing holding it. I used a screw from the router to hold it.

Step 7



- ❗ only popping the back corners does not appear to be enough.
- The front area seems stronger, and it feels like it may snap my opening tool. onto the [big guns!](#)

Step 8 — THE SPUDGENATOR 9000!



- Engraved with the word IFIXIT to show authenticity.
- Made with **REAL** metal
- Look at that *obviously not edited in* shine!
- Luckily I own one of these beauties. you can buy one too! [BUY THE SPUDGENATOR 9000 HERE!](#)

Step 9



- insert the SPUDGENATOR 9000 and slide it through the split until you here pops.

 [POP!](#)

 [POP!](#)

 [POP!](#)

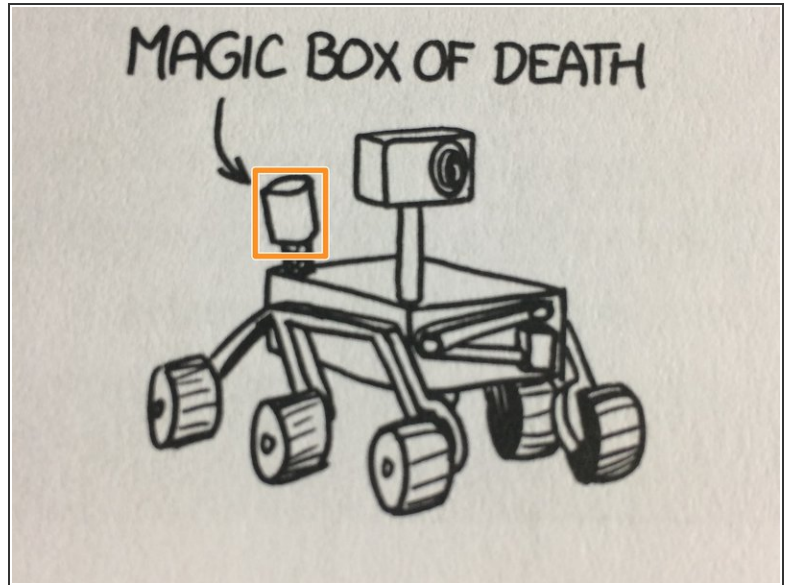
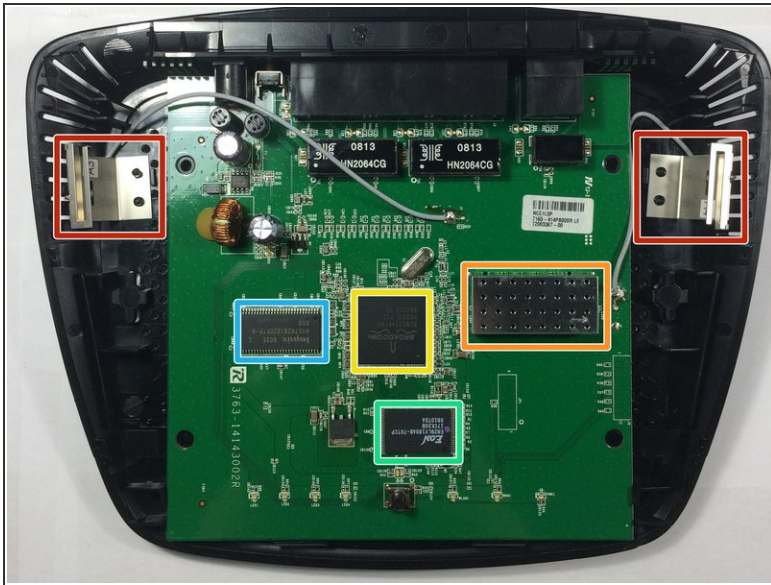
- Eventually it will open.

Step 10



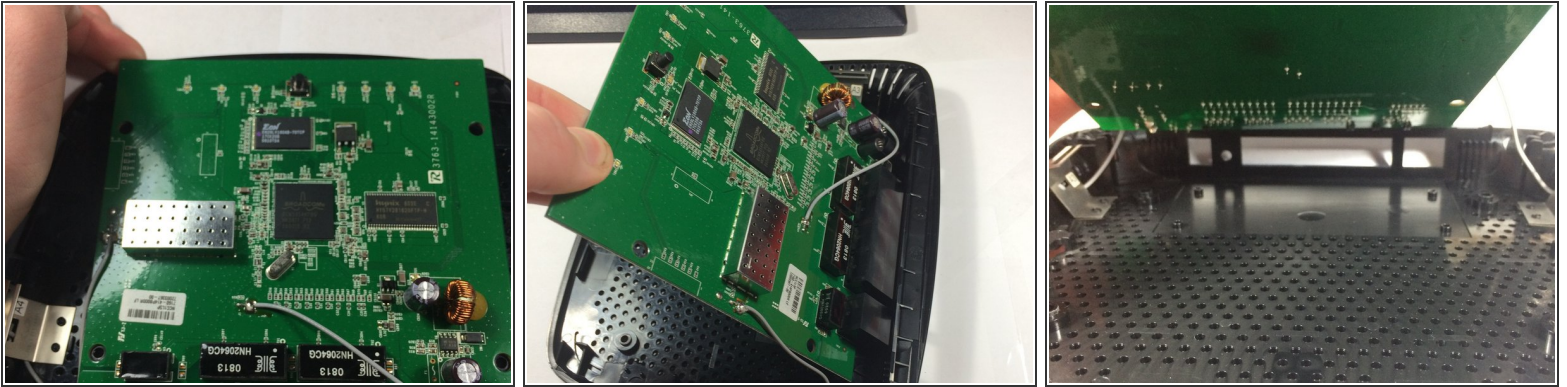
- Here is the back of the WPS button.
- These tabs are held in too much for my fingers to get! Time for the SPUNGENATOR 9000! use it to pry those tough tabs.
- Aaaaand its out! (after breaking a tab)

Step 11 — What's inside?



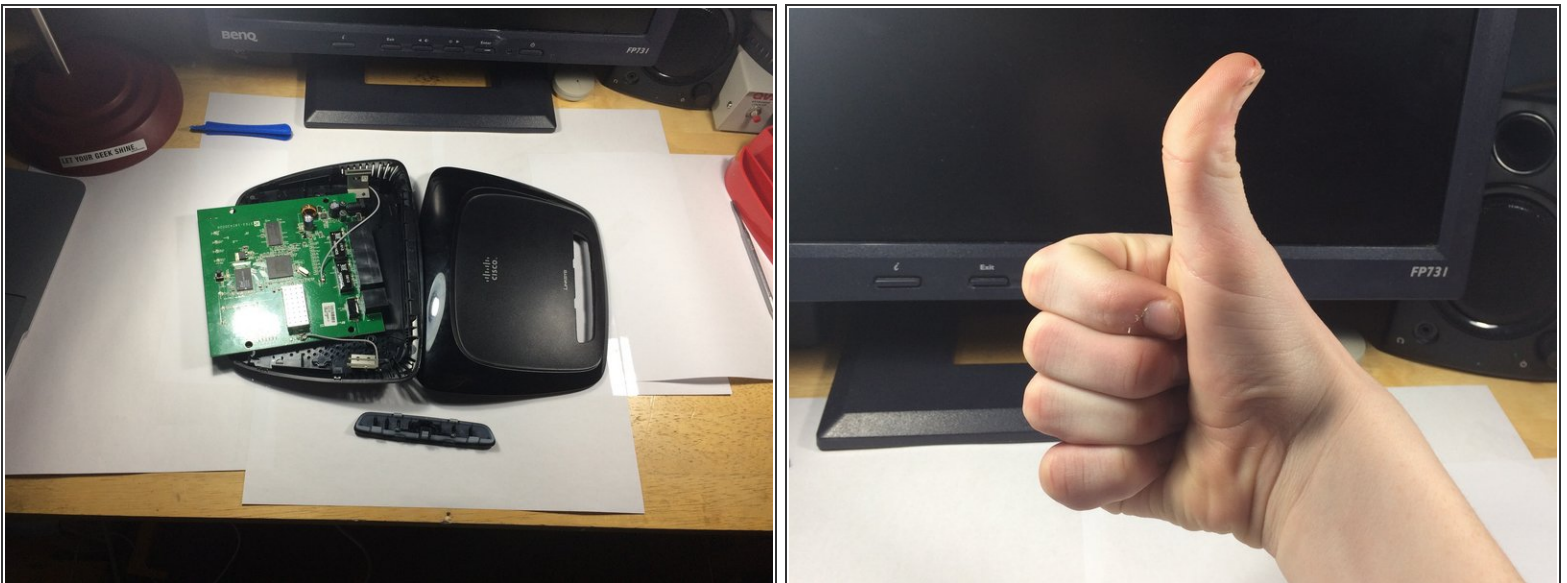
- 2 antennas
- MAGIC BOX OF DEATH!
- [Broadcom 802.11 b/g MAC/PHY/ Radio + Switch](#)
- [Flash Memory](#)
- [SDRAM](#)
- 🔖 [2nd image from XKCD What If?](#)

Step 12



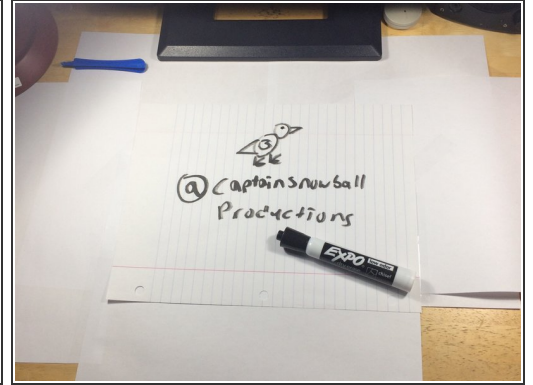
- Removal of the logic board motherboard includes no screws.
- ⓘ I'm not removing the motherboard because that would involve cutting the wires, and I want to use this later! (not in the mood for soldering today. =p)


Step 13 — THE END!



- All the parts.
- ⓘ Thumbs up not included.

Step 14 — SETUP



 I used 2 [Daylight LEDs](#) for the lighting. (meaning 2 lights)

 I also used [some printer paper](#). (without the sign)