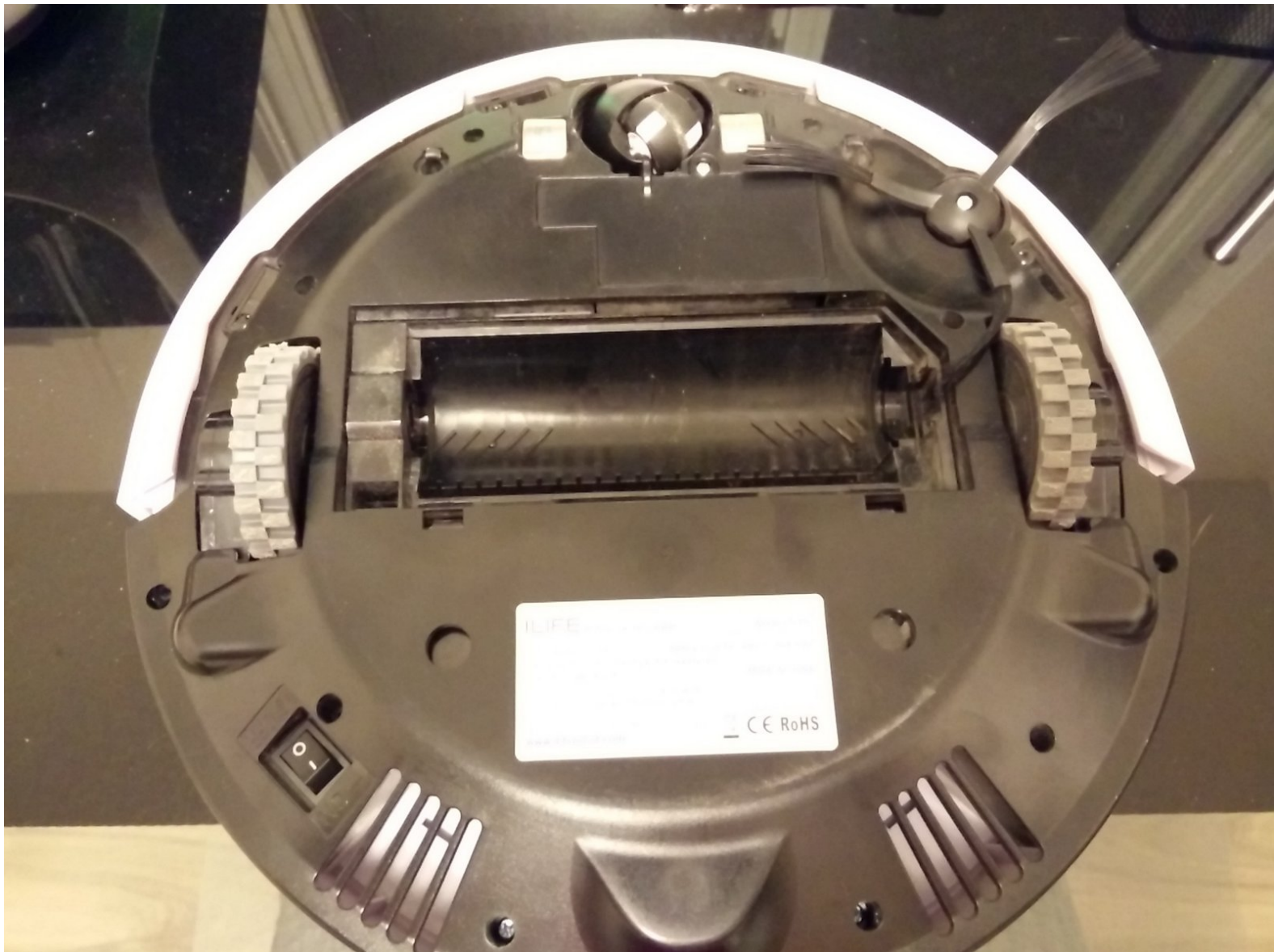




iLife V7S (Chuwi) Teardown (fixing 4 beeps issue)

Tear down of an iLife V7S, V7 robot vacuum. Fix 4 beeps issue.

Written By: Slava



INTRODUCTION

In iLife (Chuwi) V7, V7S robots, 4 beeps mean that the brush is not rotating and the vacuum requires clean up. If you already did the normal clean up (clean main brush, dust bin, side brush, center wheel) and your robot vacuum still encounters the same issue of suddenly stopping, backing up and beeping 4 times, it means that this time you need to clean the main brush motor. Something has stopped it from spinning.

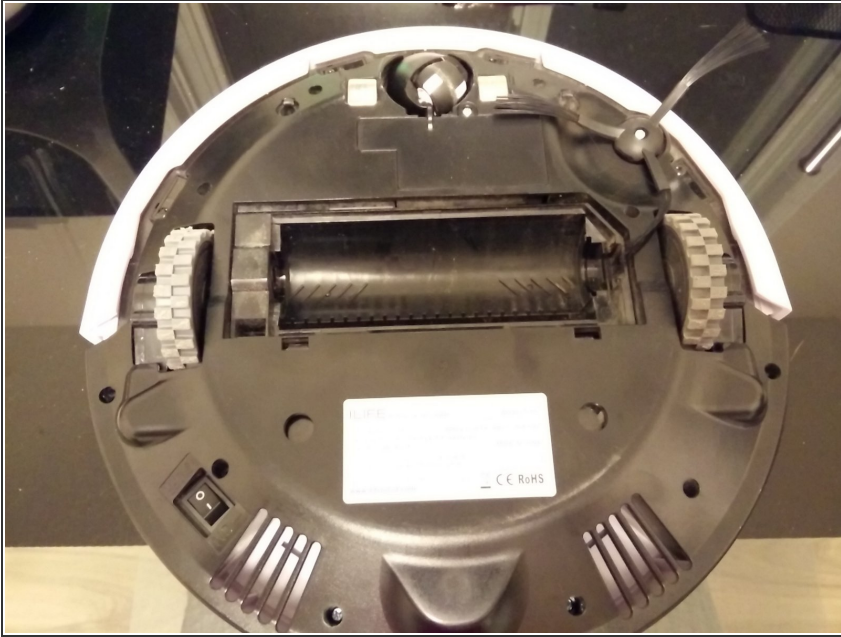
In this manual, you'll find tearing down and fixing a robot vacuum iLife V7S. The issue fixed is continuous stopping with 4 beeps even with new brushes and the vacuum cleaned.



TOOLS:

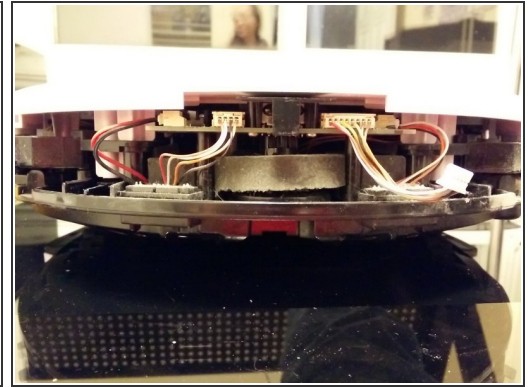
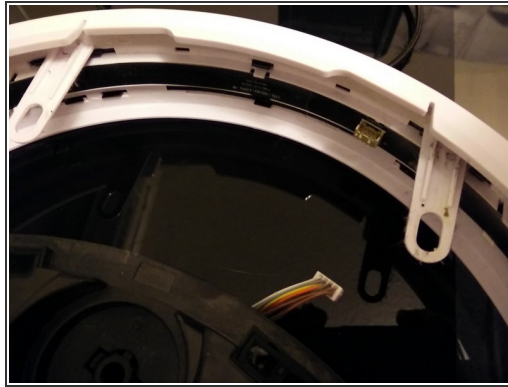
- [Screwdriver](#) (1)
 - [Tweezers](#) (1)
-

Step 1 — Flip your vacuum upside down



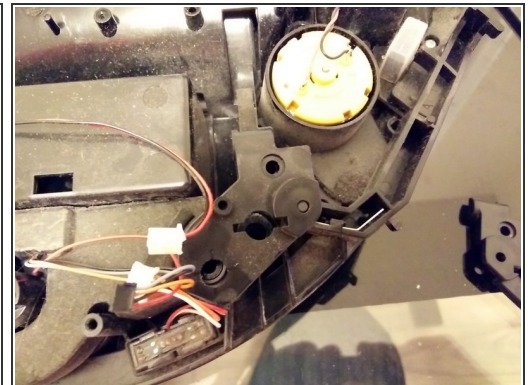
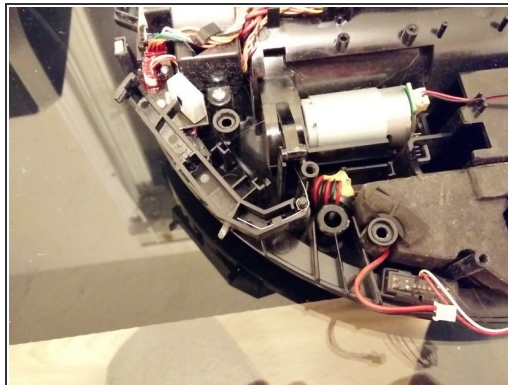
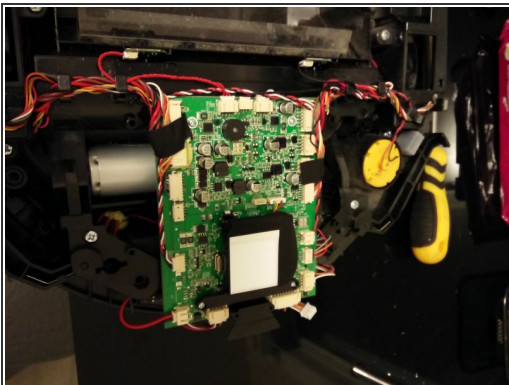
- Turn off bottom switch
- Remove dust bin
- Flip your vacuum upside down
- remove main brush (already removed on the pic.)
- remove center wheel (pull out), wipe center wheel IR sensor (dark plastic drop under the wheel), remove all hairs and dust from the wheel. The wheel can be separated from the larger base by further pulling it out from it's round base
- unscrew and remove side brush (upper right)
- remove screws from all bottom seats, two top in the middle will have plastic tubes that will need to be removed to release front bumper
- Remove battery door screw, battery door (below center wheel on photo) and remove the battery unplugging it first and pulling on special loop.

Step 2 — Removing front bumper



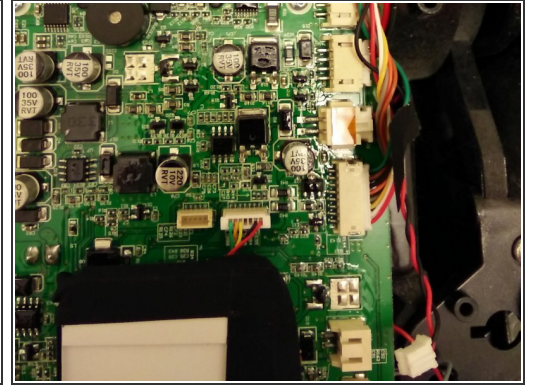
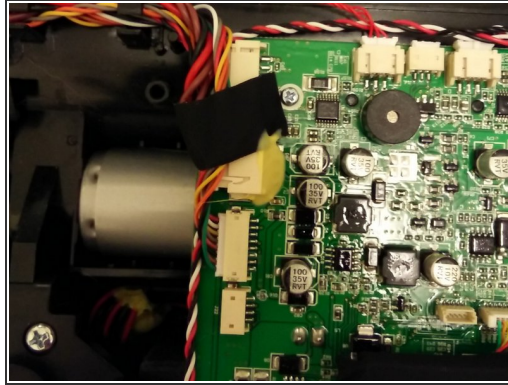
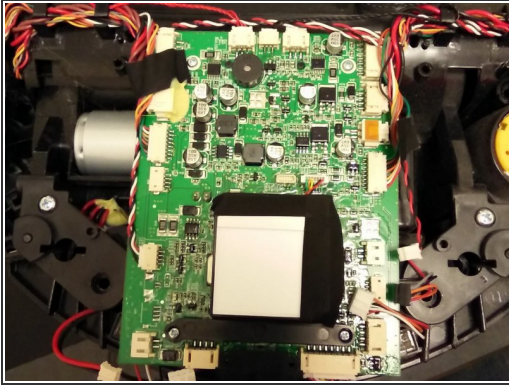
- when 2 screws removed (larger holes on the photo) gently pull the front bumper out of the vacuum.
- carefully pull on the wires and unplug the connector

Step 3 — Removing top cover



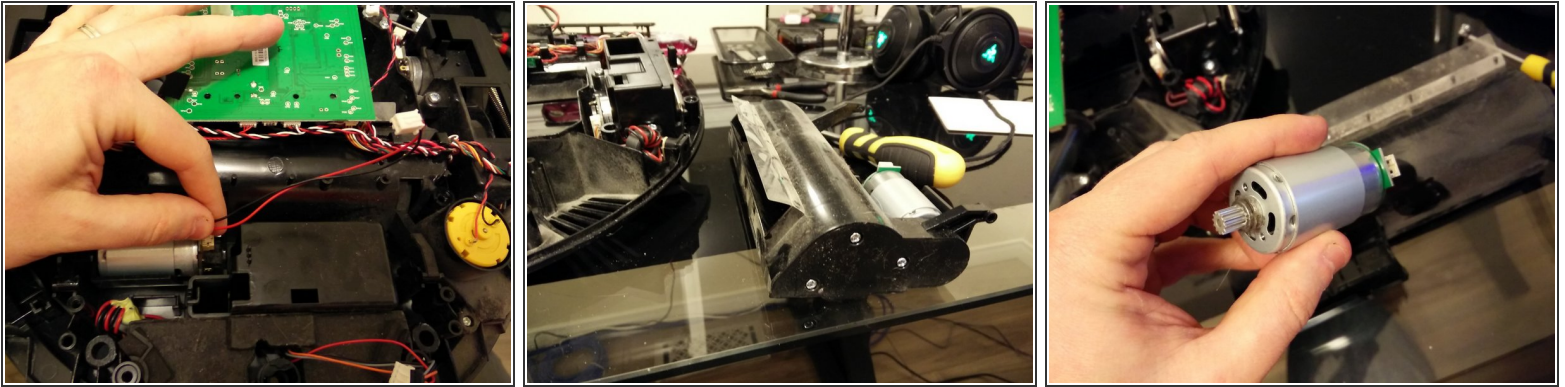
- Remove top cover
- remove screws (larger two on the sides outside the board)
- remove "bumper" arms, be careful don't lose the springs (on the photo the board is already removed as described in the next step)

Step 4 — Removing the board



- unplug wire connectors from the front of the board and remove 4 screws holding it in place
- Flip the board to the other side to access the main brush motor

Step 5 — Removing main motor tray



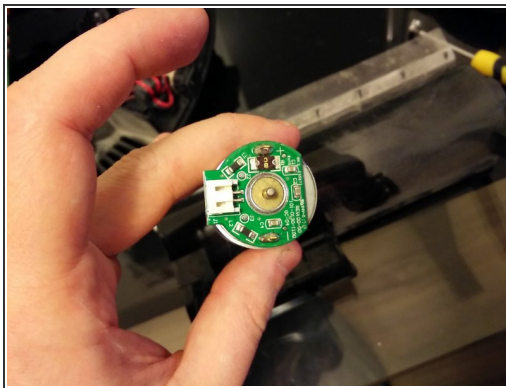
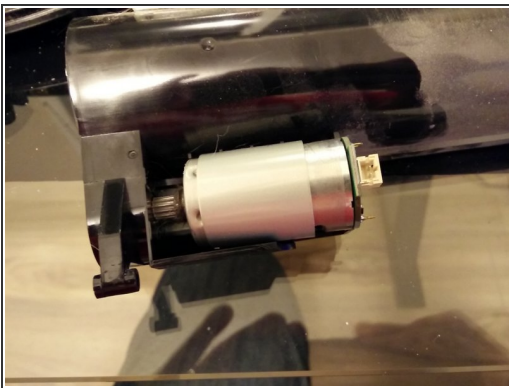
- Now you should see something like this
- Unplug the power wire from the motor and put it aside, memorize how it was installed
- Once all other parts were removed from the way you can put your vacuum on the side of the table or on your knees and start pulling out the motor tray from the bottom of the unit
- Use your fingers to push the transparent flap through the opening while pulling the tray out
- With the motor tray removed from the unit unscrew three white screws from the side of the tray to open the main gear and the belt, remove all dust and hairs and unscrew 2 small screws holding the motor
- With the motor removed use tweezers, needle or anything that works to remove hairs and dust from behind the motor gear. Once everything is cleaned and tidy apply some WD40 to the bottom of plastic gear and perhaps put a drop behind the motor gear. DO NOT SPRAY it on the motor or inside the motor. This could make a fire hazard!

Step 6 — Cleaning gear room



- You can carefully remove the rear from the element and clean it from all the dirt. You can use a head screwdriver.
- After cleaning the bearing you can give it some WD40 .
- Later for the reassembling you can arrange the belt easy on the gears and put the backplate with the screws afterwards on and press the rear to the backplate.

Step 7 — Additional pictures



- Assemble the unit following the tear down steps backwards.
- You're done! The vacuum works!
- While your vacuum is back to work grab some cold beer from the fridge and crack open a tallboy.
- Enjoy your beer while your robot vacuum does its job.
- You're awesome!
- Thank you for checking out my manual!

