



Dell Chromebook 11-3120 Battery Replacement

Replace the battery of a Dell Chromebook 11-3120.

Written By: Dalton D



INTRODUCTION

This guide will help you replace the battery of a Dell Chromebook 11-3120. Please have a safe, static-free place where you can place the battery after it has been removed from the device.



TOOLS:

- [Phillips #0 Screwdriver](#) (1)
 - [Spudger](#) (1)
-

Step 1 — Remove screws



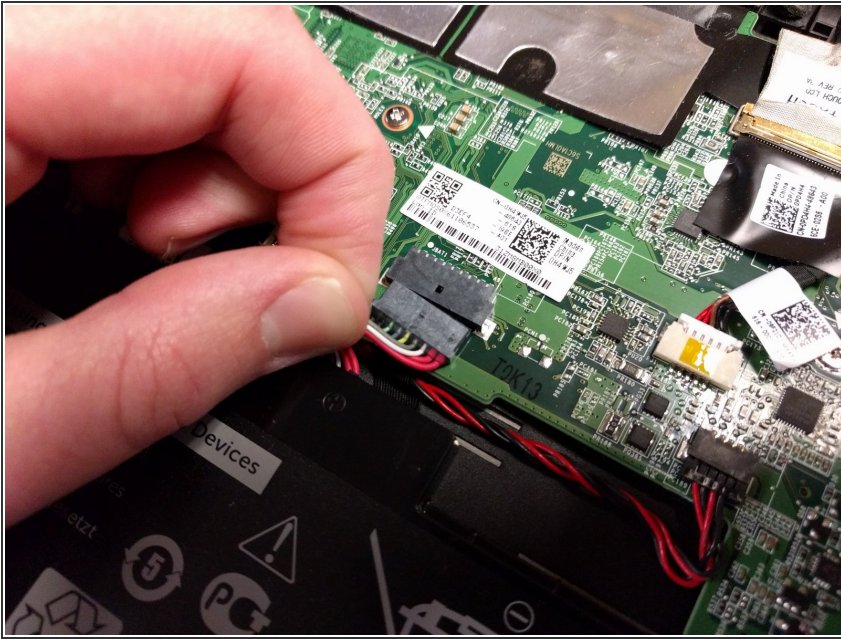
- Flip the device over so the bottom is facing up
- Remove the 7 visible Philips screws from the device's bottom cover

Step 2



- Insert a thin prying tool into the front (facing the user) corner between the rubber bumper and the plastic case to pop several latches.
- Starting from the partially-opened corner, pull the case away from the device in a hinging motion. I rotated the computer so that the opened corner faced me in the image.

Step 3 — Unplug battery connector



- Unplug the battery connector from the motherboard

Step 4 — Remove screws



- Remove the two silver screws that hold the battery to the case

Step 5



- Lift the battery straight out of the case and place it in a safe, static-free place

To reassemble your device, follow these instructions in reverse order.