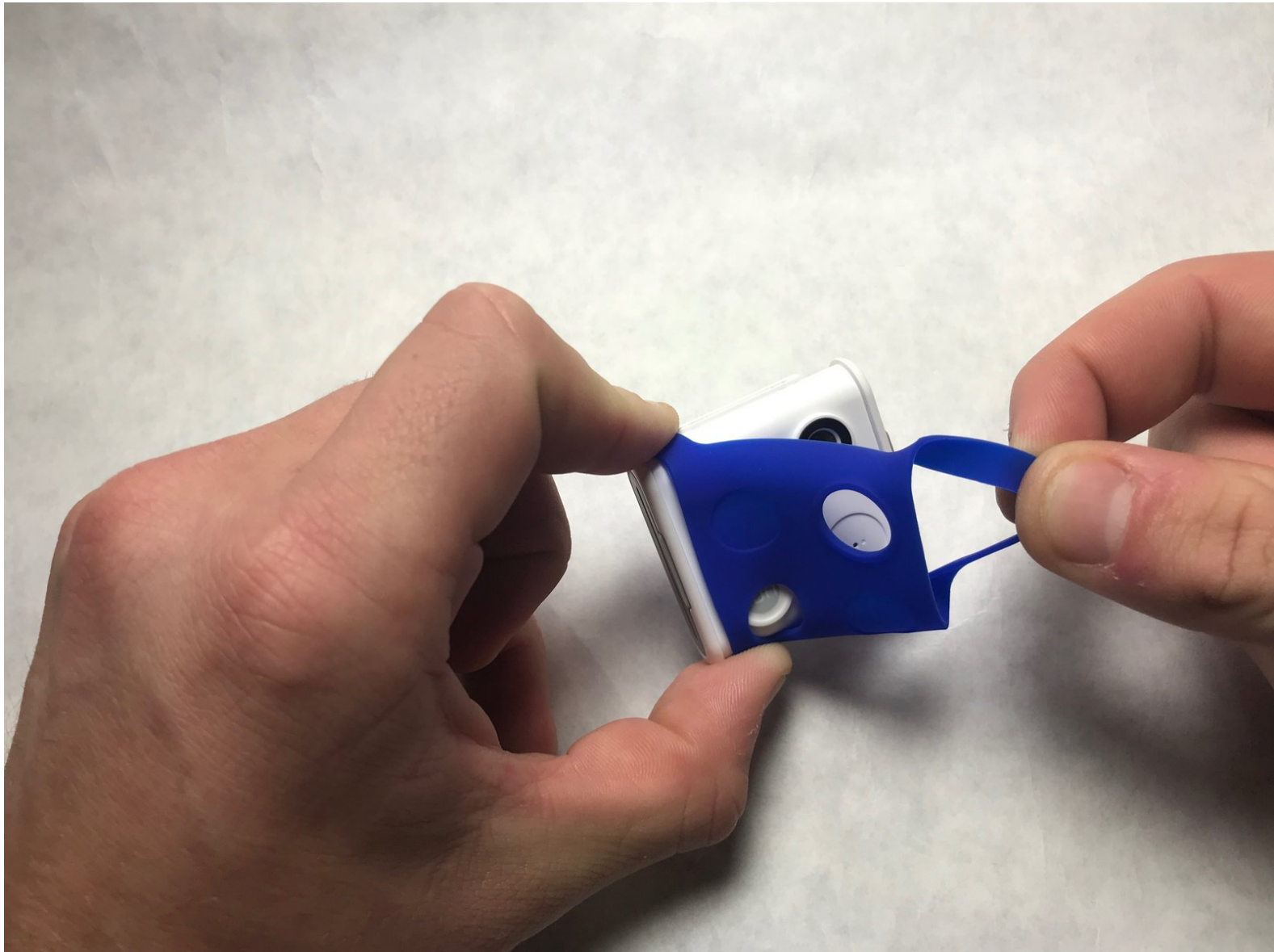




# iON SnapCam 1046 Lite Camera Lens and Cover Replacement

This guide will show how to remove the cover and access and replace the camera lens.

Written By: Kyle Whittaker



# INTRODUCTION

This guide shows how to remove and replace both the cover and camera lens on the iON SnapCam 1046 Lite. Replacement is quick and simple.



## TOOLS:

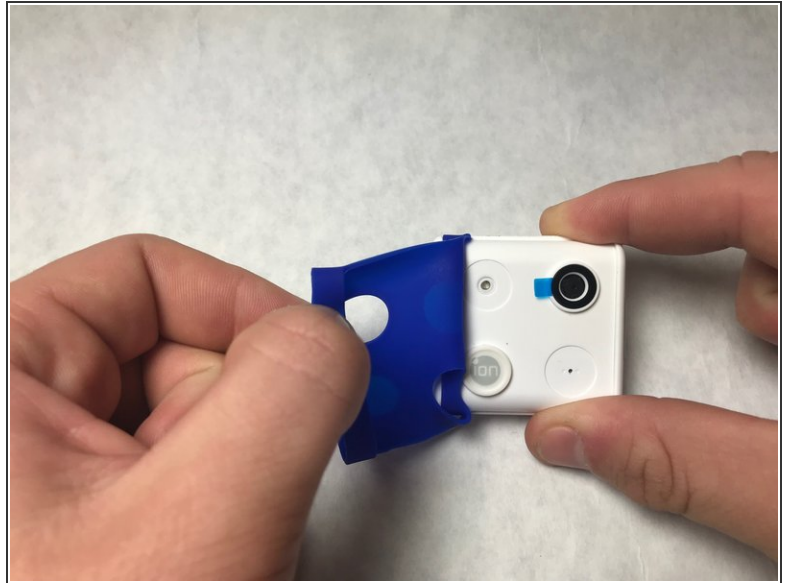
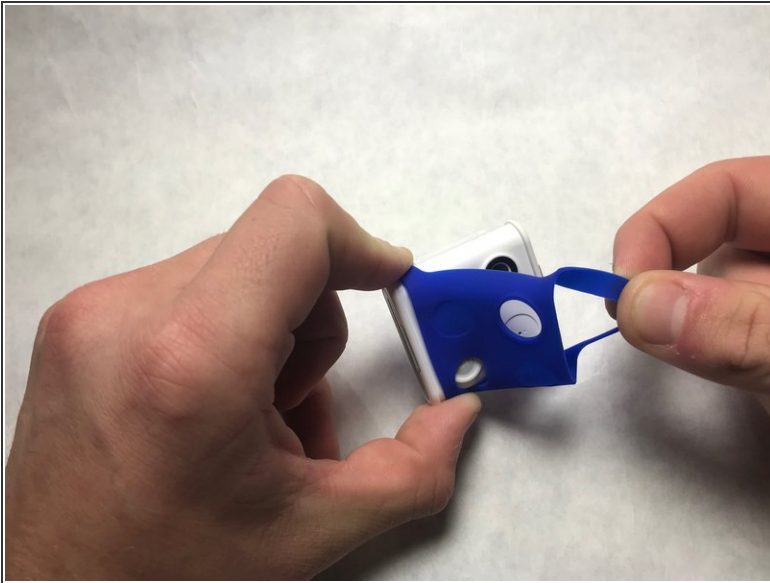
- [Phillips #00 Screwdriver](#) (1)
- [iFixit Opening Tools](#) (1)
- [Metal Spudger](#) (1)



## PARTS:

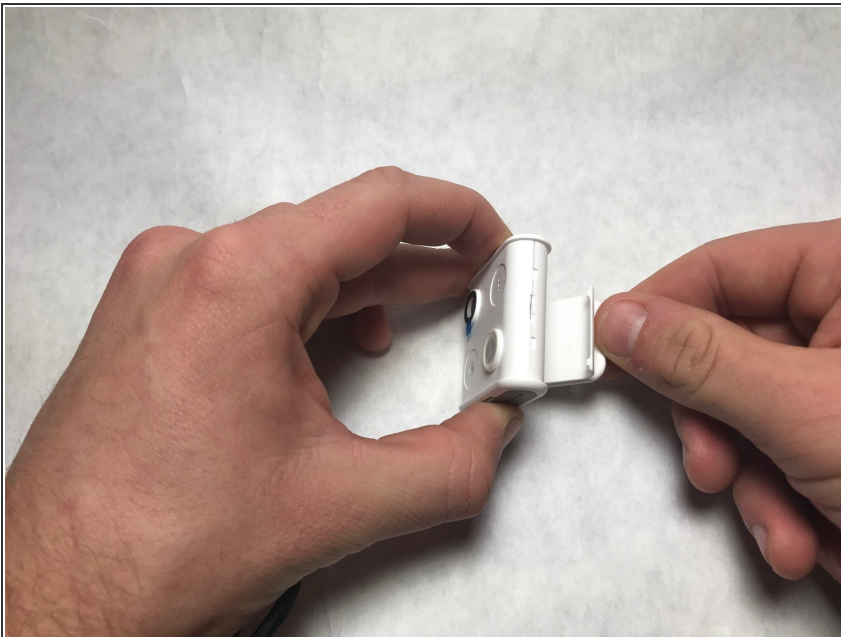
- [Screws](#) (4)  
PH00  
*4mm in length*

## Step 1 — Camera Lens and Cover



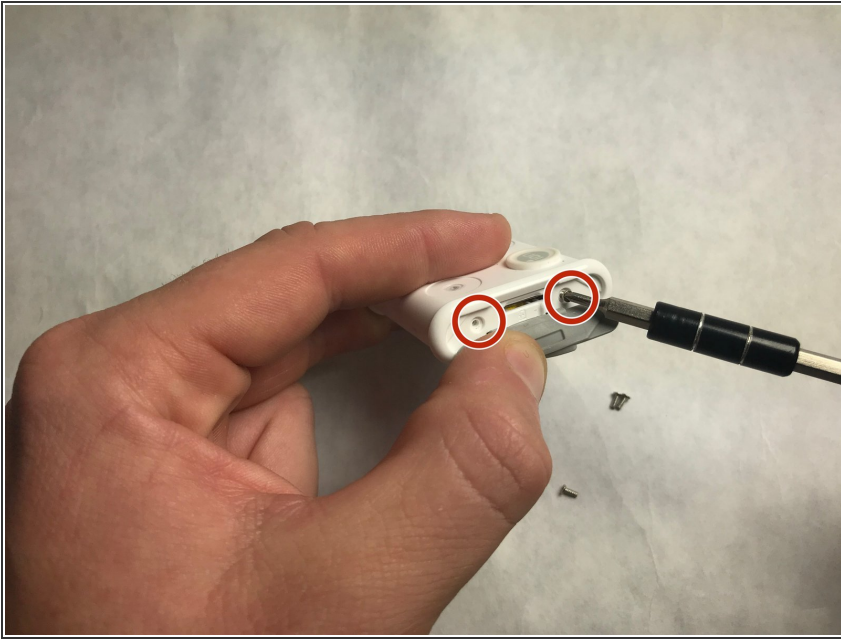
- Remove any external skins placed on the device. To do so, simply lift up and peel to remove.

## Step 2



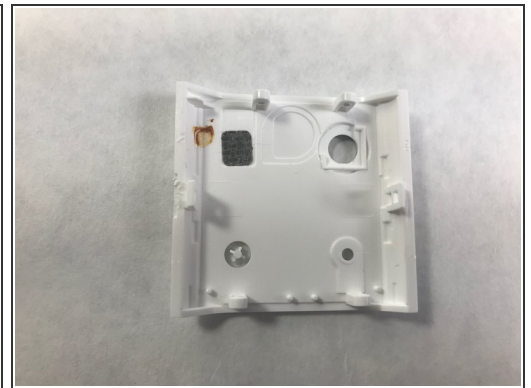
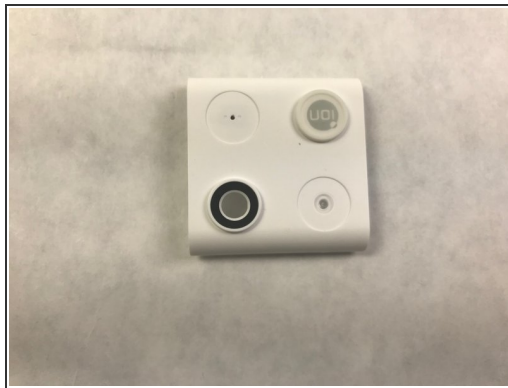
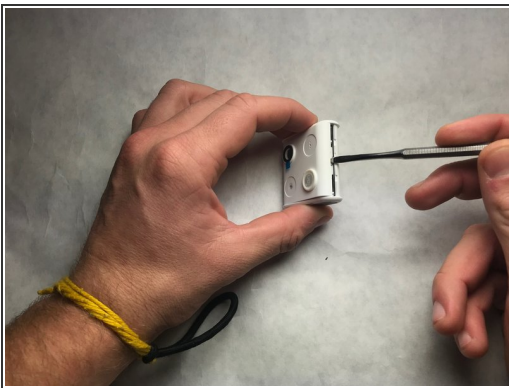
- Firmly pull on the back clip in order to remove.

### Step 3



- Use a Phillips head screwdriver to remove the four 4mm PH00 screws located on the sides of the device. All screws are located under each of the grey covers for the microSD card and the microUSB insert.

### Step 4



- Grab a metal or plastic opening tool and insert it into the middle slot on the bottom of the camera and lightly pry open.
- Locate the camera lens in the bottom left-hand corner of the picture which can be replaced by replacing the entire cover. The back of the cover is also shown. The camera is now located in the top right-hand corner of the picture.

Once the camera lens and cover have been replaced, reassemble the iON SnapCam Lite by following these steps in reverse order.