



Toshiba Satellite A305-S6848 Hard Drive Replacement

This guide teaches you how to replace the hard drive in a Toshiba Satellite A305-S6848 laptop.

Written By: Joshua E Hong



INTRODUCTION

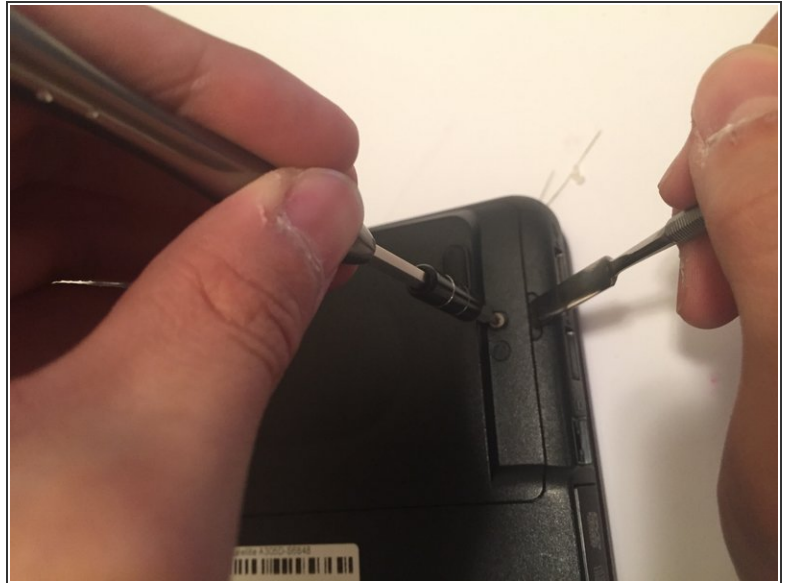
This guide teaches you how to replace the hard drive in a Toshiba Satellite A305-S6848 laptop.



TOOLS:

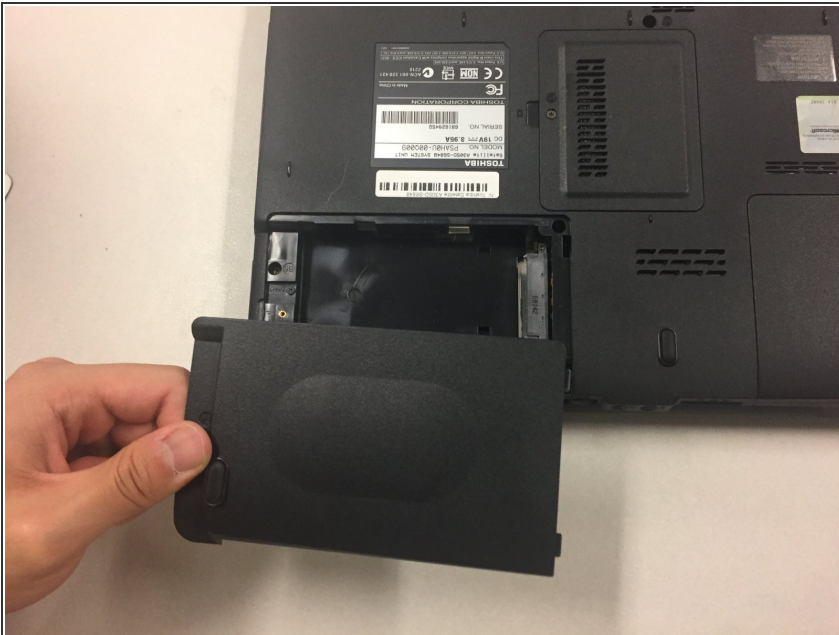
- [Metal Spudger](#) (1)
 - [Phillips #0 Screwdriver](#) (1)
-

Step 1 — Hard Drive



- Remove the 5.8mm Phillip's #0 screw with Phillip's #0 screwdriver while prying plastic covering up with metal spudger.

Step 2



- Remove plastic covering.
- Pull up the silver tab to remove the hard drive from the slot.

To reassemble your device, follow these instructions in reverse order.

This document was generated on 2020-11-28 06:22:04 AM (MST).

