



# HP 15-ay014dx Motherboard Replacement

Replacement of the motherboard in the HP 15-ay014dx laptop.

Written By: Drake Scoville



---

## INTRODUCTION

This guide will show you how to safely remove the motherboard from your HP 15-ay014dx laptop.


---

### TOOLS:

- [iFixit Opening Tools](#) (1)
  - [Spudger](#) (1)
  - [Tweezers](#) (1)
  - [Phillips #00 Screwdriver](#) (1)
-

## Step 1 — Battery



 Disconnect device from power source and power down.

## Step 2



- With the device turned upside down, use your index fingers to push the battery latches in towards each other.



### Step 3



- **i** The latch on your left will stay at the inward position, while the latch on the right will slide back out.
- Gently grasp the battery and pull it back away from the device and yourself.

### Step 4 — Optical Drive



- Close the laptop and lay it down with the bottom facing up.
- Using a size #00 Phillips screw drive remove the screw holding in the optical drive.

## Step 5



- Grip the optical drive and gently pull it out.

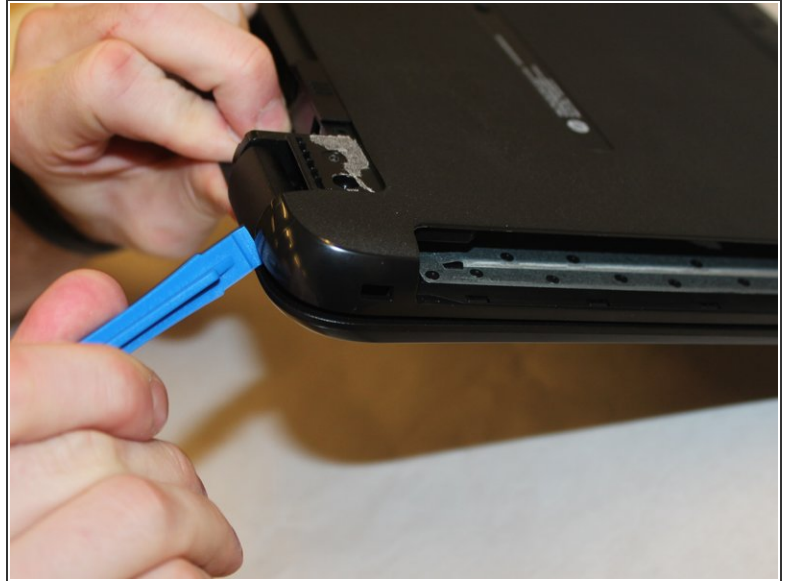
## Step 6 — RAM



- Remove the 11 screws holding the body of the laptop together with a size #00 Phillips screwdriver.

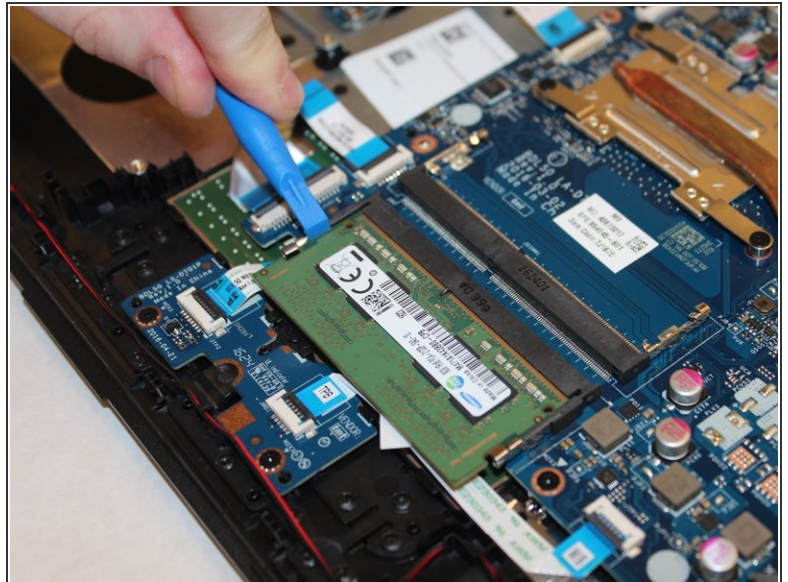
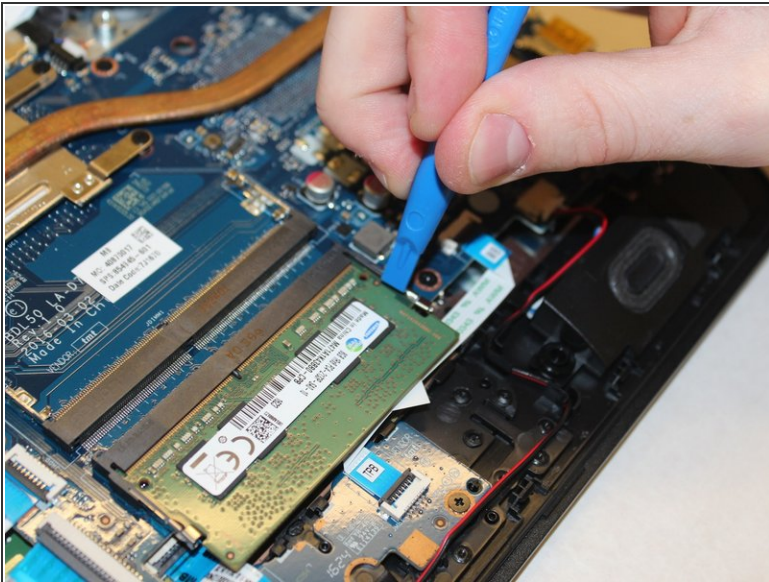


## Step 7



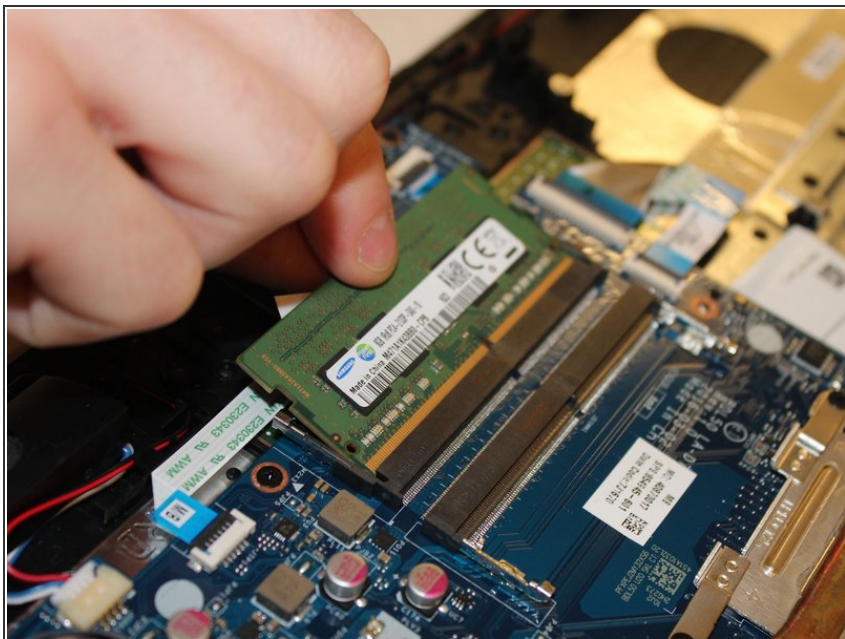
- Use the spudger to press the tabs in the back of the computer. Carefully remove the back of the laptop by prying around the sides using the plastic opening tool.

## Step 8



- Undo the clips holding the RAM in place using the plastic opening tool.

## Step 9



- Carefully pull out the RAM from the motherboard.

## Step 10 — Hard Drive Disk



- Remove the highlighted screws holding the body of the laptop together with a size #00 Phillips screwdriver.

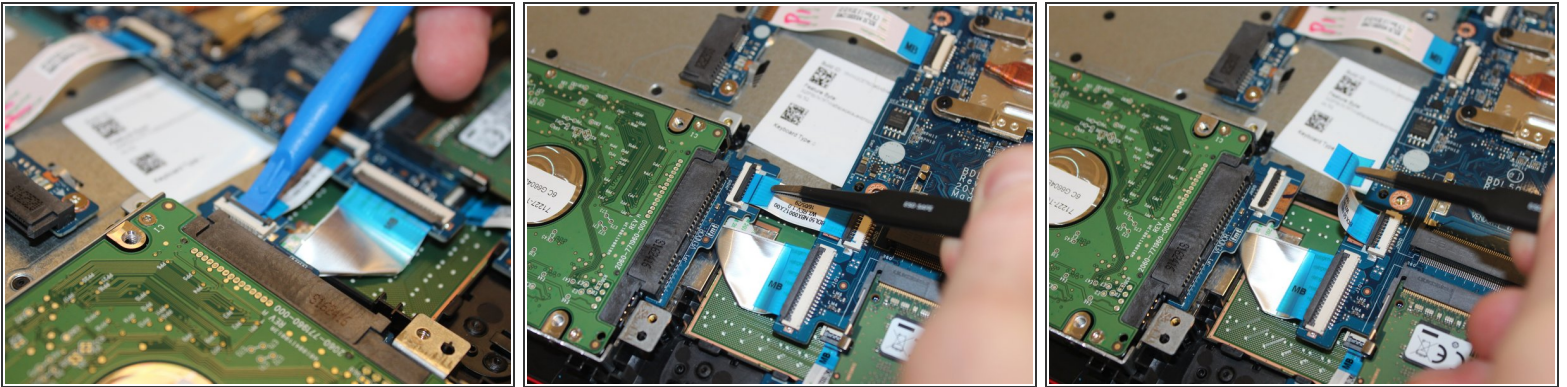


## Step 11



- Using the spudger, push in the tabs in the back that hold the body together. Carefully pry the body apart by working the spudger around the body.
- Pull the back cover off.

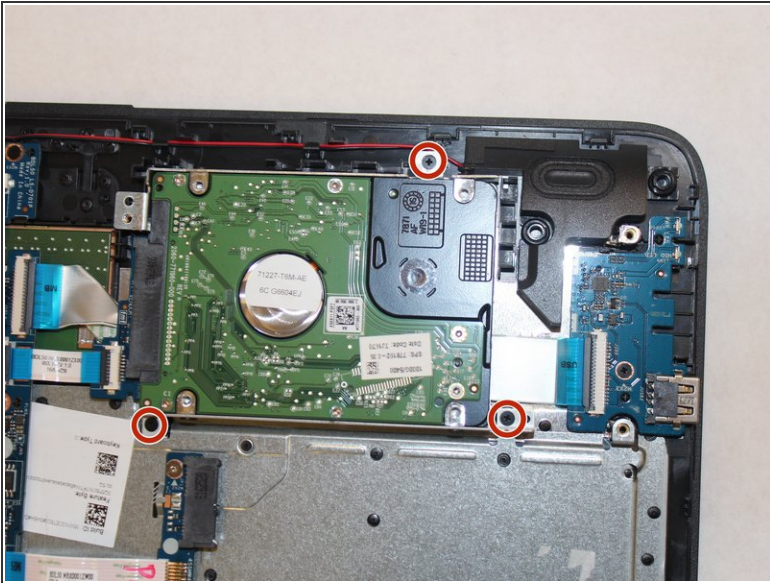
## Step 12



- Pry up on the clamp holding the SATA power ribbon using the plastic opening tool.
- Pull out the SATA power ribbon using the tweezers.

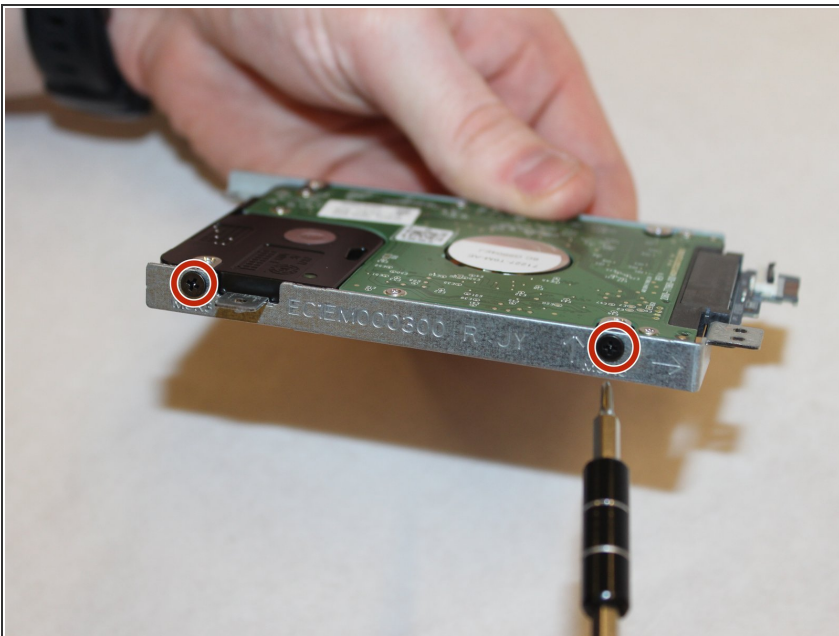


## Step 13



- Remove the highlighted screws holding the hard drive to the body using the Philips #00 screwdriver.
- Remove the hard drive.

## Step 14



- Remove the 4 screws holding the hard drive to the hard drive cage using the Philips #00 screwdriver.

## Step 15 — Wireless Card



- Remove the 11 screws holding the body of the laptop together with a size #00 Phillips screwdriver.

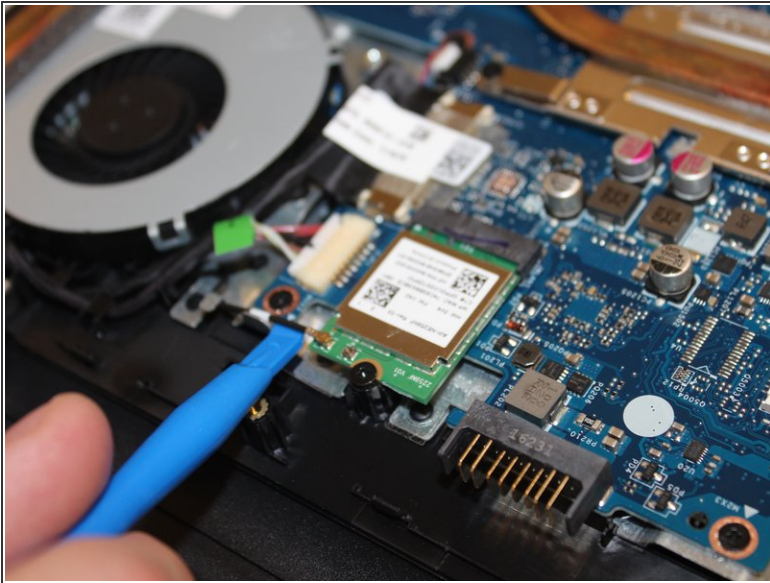
## Step 16



- Using the spudger, push in the tabs in the back that hold the body together. Carefully pry the body apart by working the spudger around the body.



## Step 17



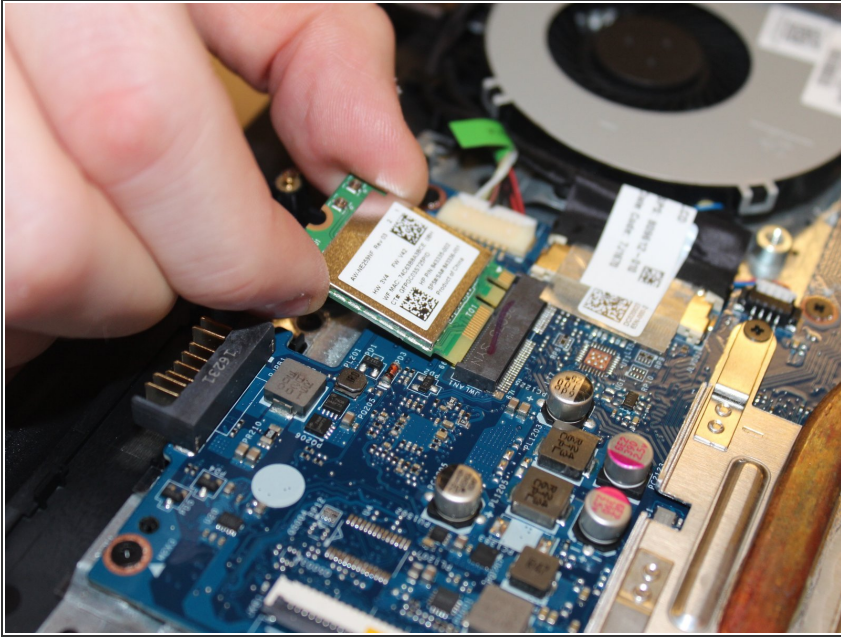
- Using the spudger, carefully pry the wire connecting the wireless card to the motherboard off of it.

## Step 18



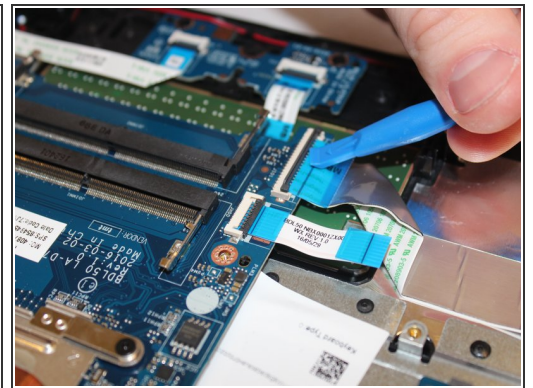
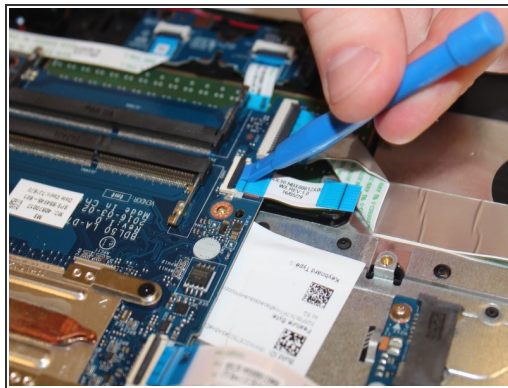
- Using the size #00 Phillips screwdriver remove the single screw holding it in place.

## Step 19



- carefully pull the card of its slot.

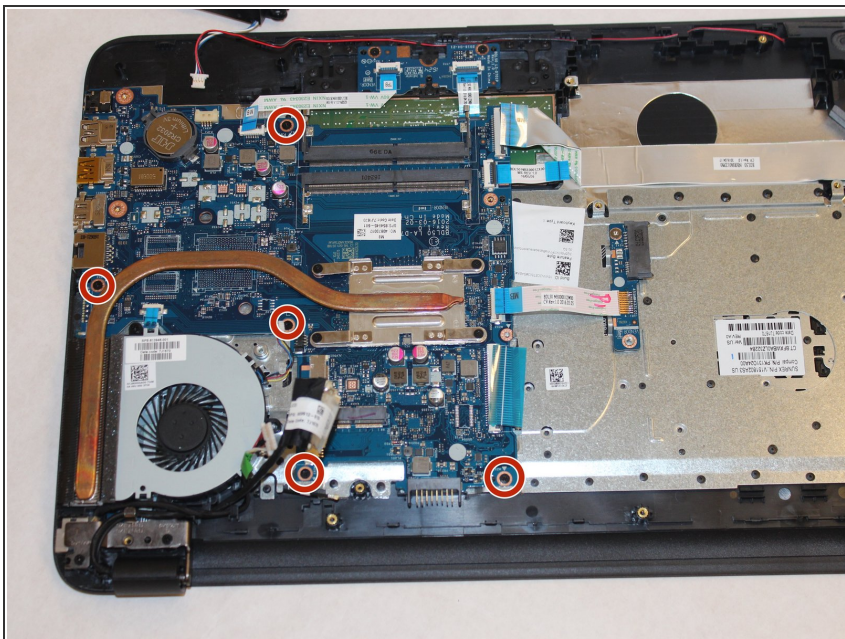
## Step 20 — Motherboard



- Disconnect all ribbon connectors by flipping up the black tabs and gently pulling them out.
- Disconnect the speakers by gently pulling the connector out.
- Disconnect the Fan by gently pulling the connector out.
- Disconnect the power by gently pulling the connectors out.



## Step 21



- Unscrew the five screws securing the motherboards.

## Step 22



- Gently lift the motherboard up and out of the casing.

To reassemble your device, follow these instructions in reverse order.