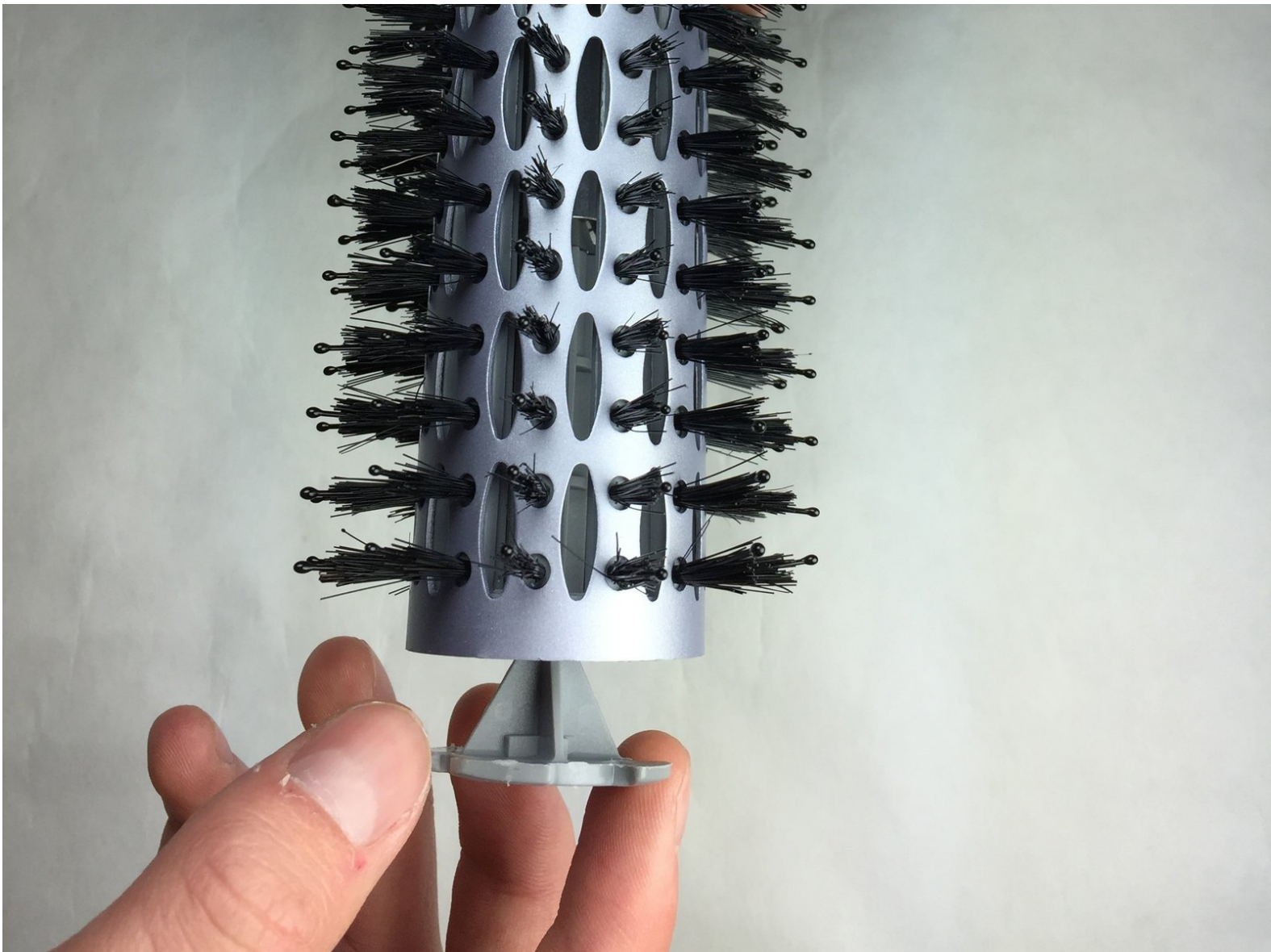




# John Frieda JFHA5R Brush Rotator Replacement

This replacement guide will show you how to replace the brush rotator inside the John Frieda JFHA5R Salon Shape brush.

Written By: Mitchell Gerlach



---

## INTRODUCTION

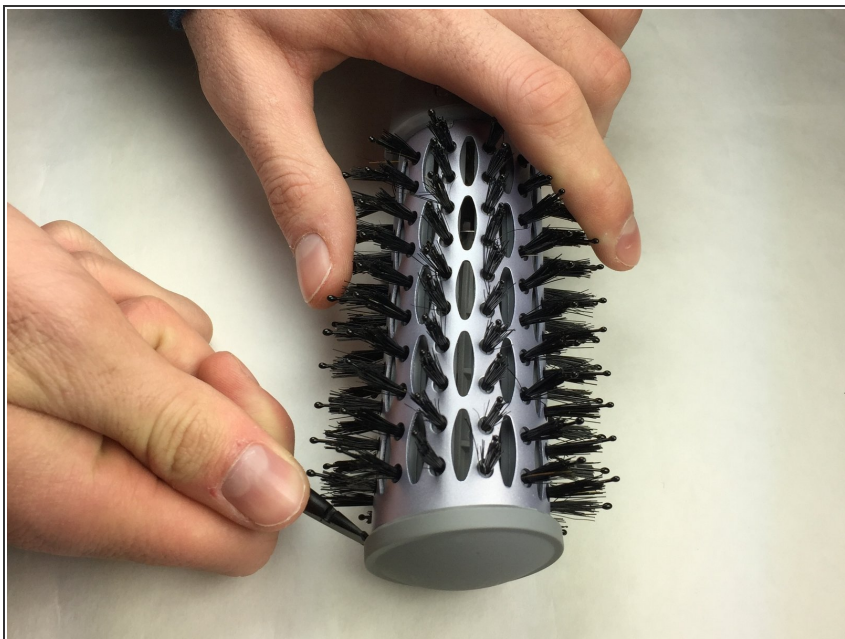
The brush rotator inside the Salon Shape brush can become tangled with hair. This replacement guide will show you how to replace the inner brush rotator.

---

### **TOOLS:**

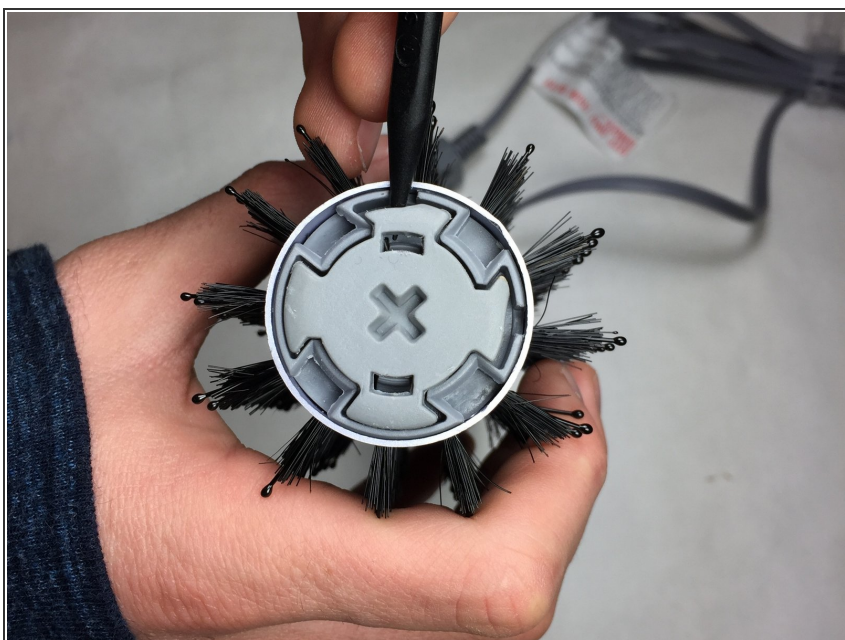
- [Spudger](#) (1)
-

## Step 1 — Brush Rotator



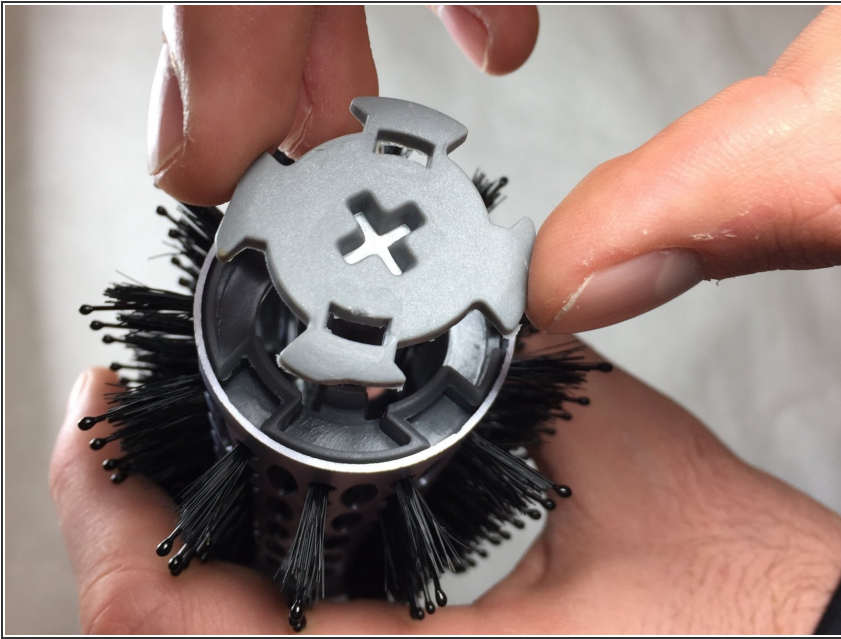
- ⚠ Ensure the brush is unplugged before attempting to open the top of it up.
- Using the spudger, pry open the top of the salon shape brush.

## Step 2



- Using the spudger, pry open the sides of the inner cover.

### Step 3



- Pull up on the inner brush rotator to remove it.

To reassemble your device, follow these instructions in reverse order.