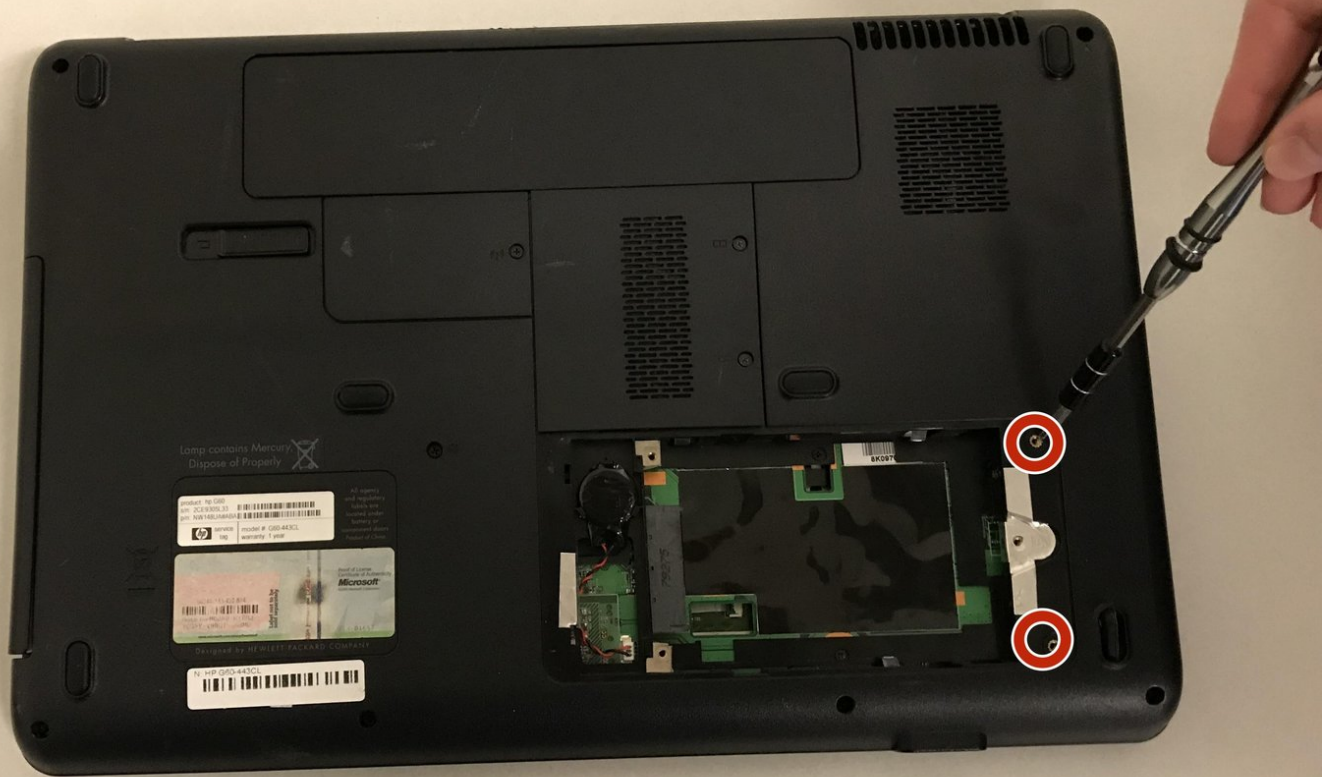




HP G60-443CL Hard Drive Replacement

Replace hard drive to prevent frequent shut downs.

Written By: Larissa Moreno-Trejo



INTRODUCTION

In order for constant shut downs to persist the hard drive will need to be replaced. At times hard drives installed incorrectly could be the issue and in that case it may not be necessary to completely replace rather to reinstall.

The only tools needed is a Positive PH0 screwdriver.



TOOLS:

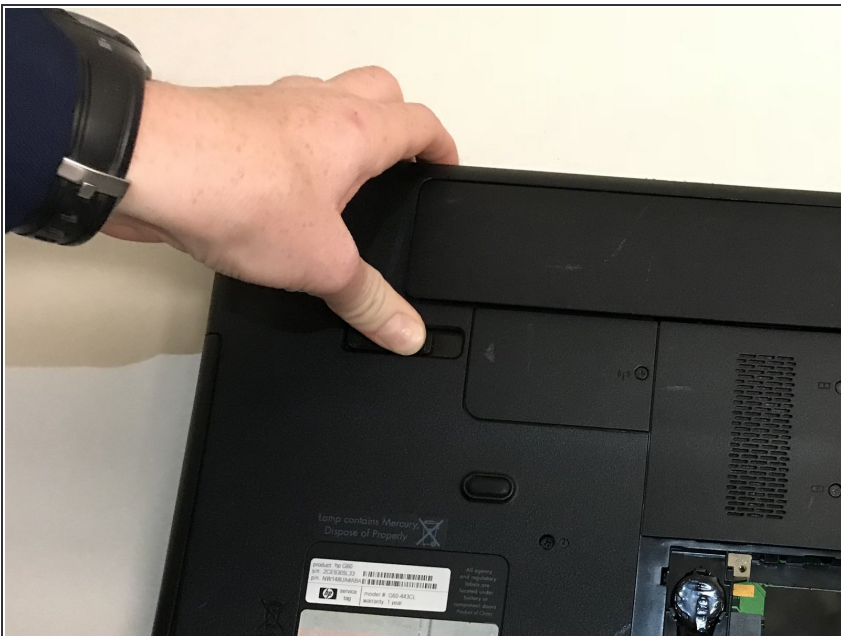
- [Phillips #0 Screwdriver](#) (1)
-

Step 1 — Battery



- Place the laptop upside down where the headphone and auxiliary jack are facing you.

Step 2



- In the top left corner, there is a lever that has a small picture of a battery on it. Slide the lever to the left.

Step 3



- Once you have slid the lever to the left, the front part of the battery will be released and you should be able to grab the released part of the battery with your thumb.

Step 4



- The battery can then be pulled out of its compartment by hand.

Step 5 — Hard Drive



- Once the battery has been removed, locate the 5mm Phillips #0 screws on the bottom right panel.
- Remove the 5mm Phillips #0 screws using the Phillips #0 Screwdriver.
- Next, remove the panel that was attached to the screws, leaving the hard drive exposed.

Step 6



- After the panel has been removed, use the screwdriver to remove the three 3mm Phillips #0 screws attached to the hard drive.

Step 7



- Once the screws attached to the hard drive are removed, you will be able to take the hard drive out of the compartment.

To reassemble your device, follow these instructions in reverse order.