



Basis B1 Band LED Screen Replacement

This guide shows the user how to replace the LED Screen on the Basis B1 Band.

Written By: Kaitlyn Lee



INTRODUCTION

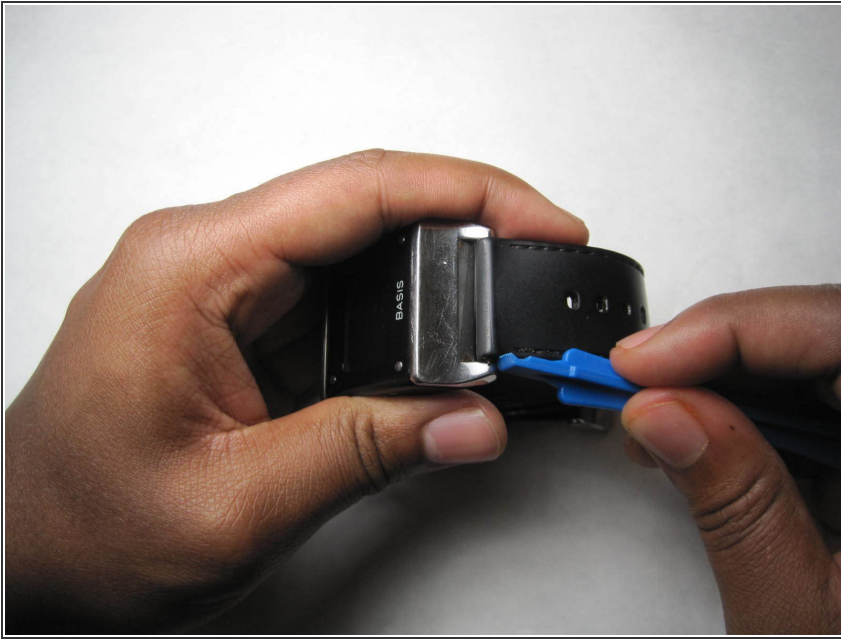
This guide shows how to replace the LED screen. This is a more complicated guide because it involves removing the back plate of the watch along with the battery.



TOOLS:

- [iFixit Opening Tools](#) (1)
 - [Phillips PH000 Screwdriver](#) (1)
 - [Tweezers](#) (1)
 - [Spudger](#) (1)
-

Step 1 — Watch Strap



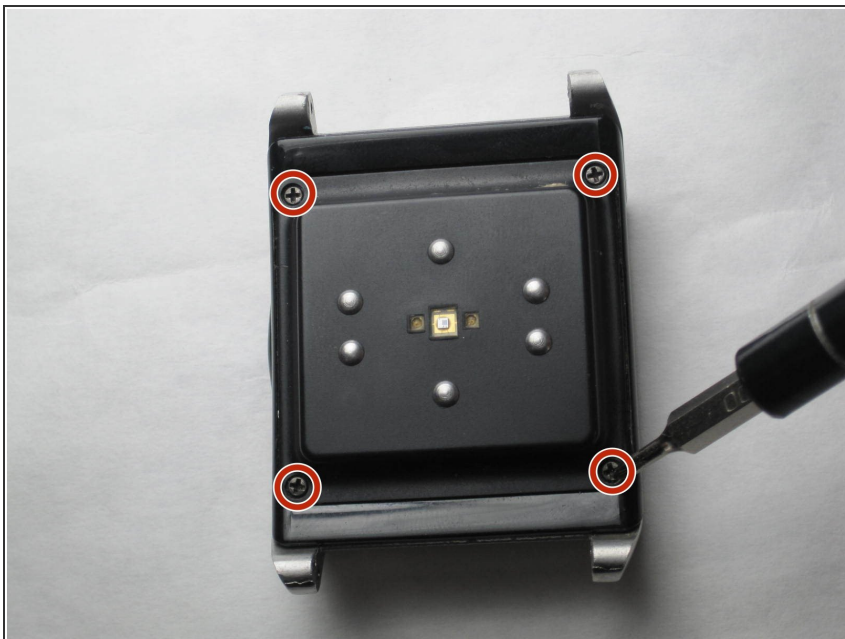
- Wedge a plastic opening tool between band contacts.

Step 2



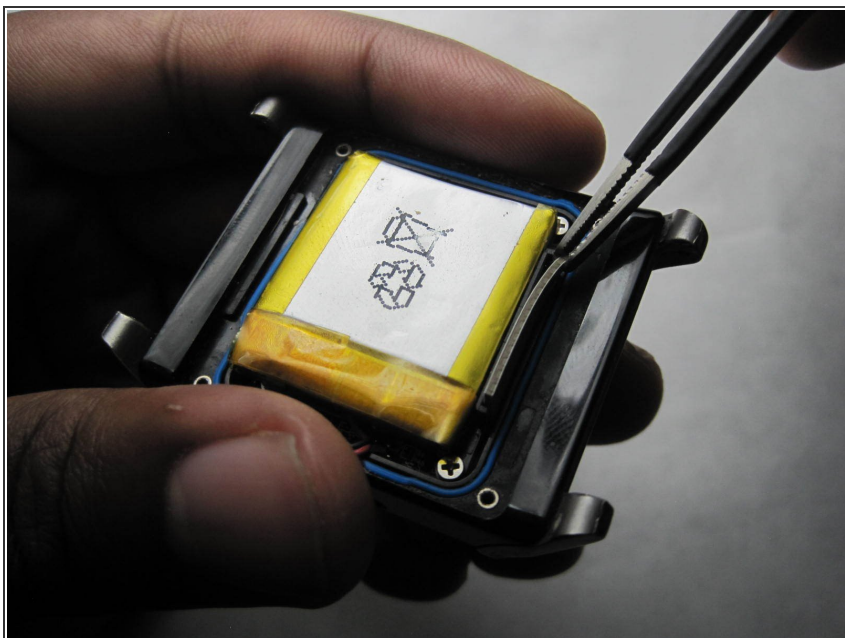
- Push in plastic opening tool until the components click and pop out of the holder.
- Repeat steps for other band.

Step 3 — Back Plate



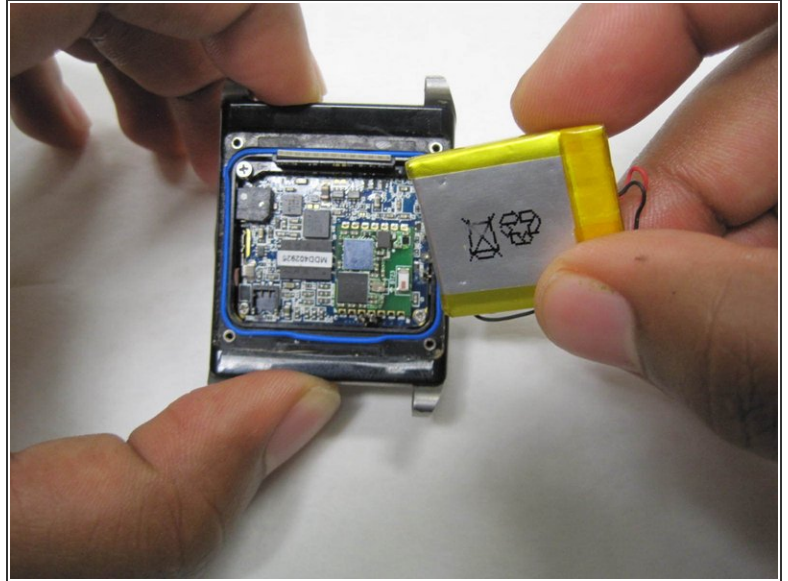
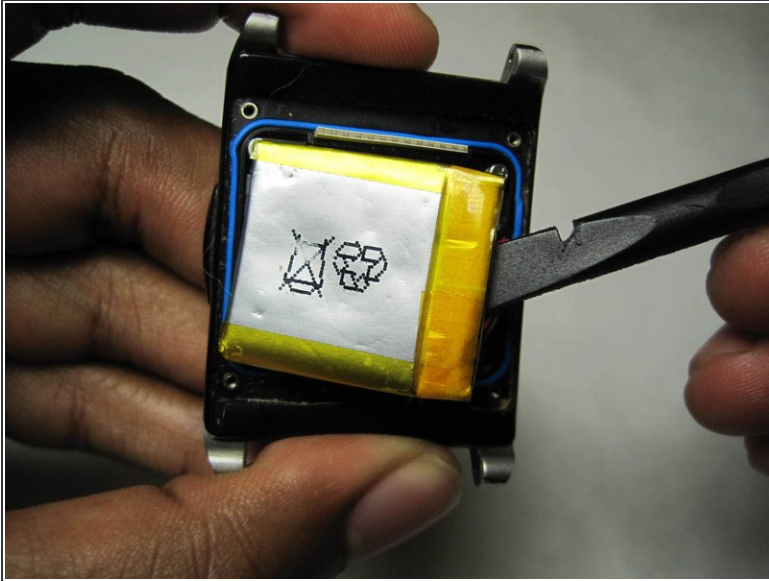
- Remove four 4mm screws using a PH000 screwdriver.
- Remove back plate.

Step 4 — Battery



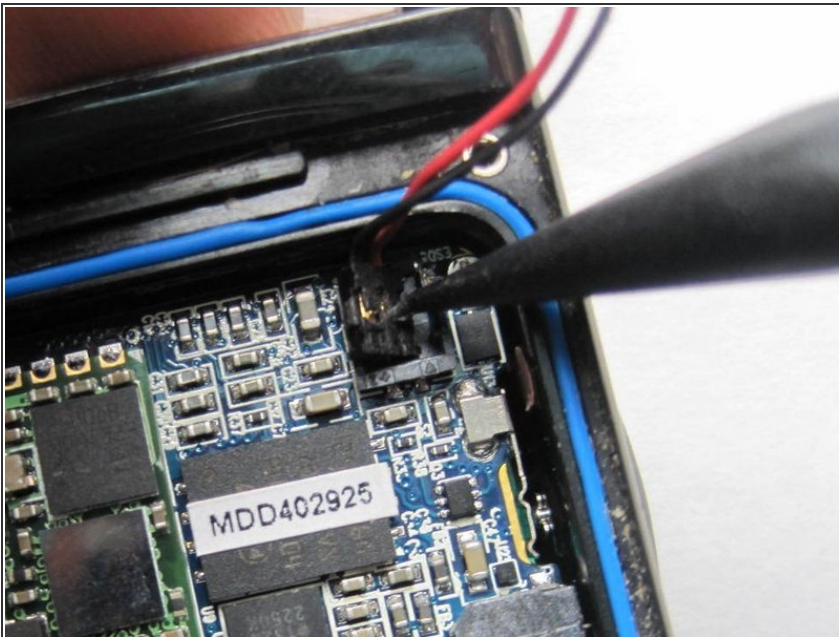
- Use tweezers to remove elastomeric, or zebra, connector.

Step 5



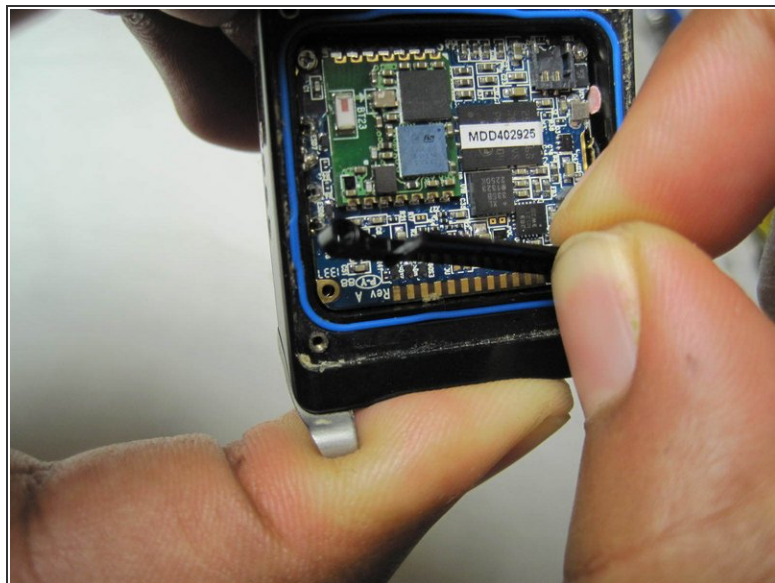
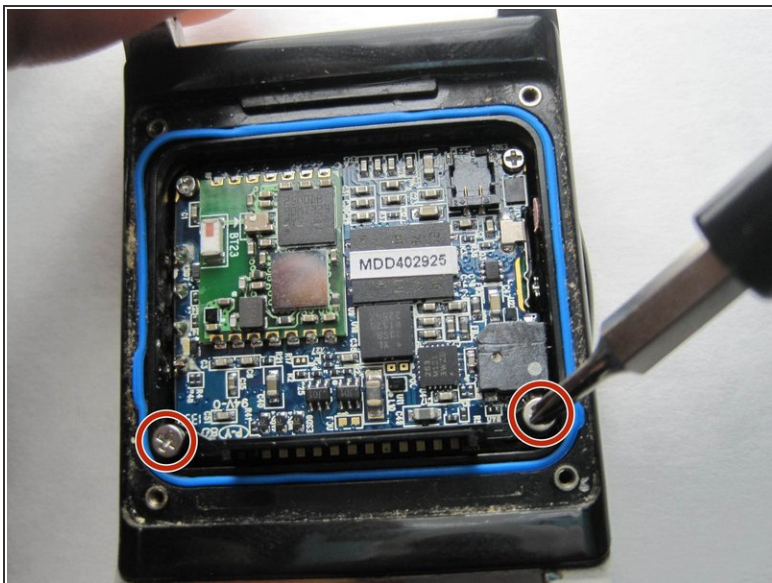
- Use the flat end of the spudger to carefully lift the battery until adhesive seal is broken.

Step 6



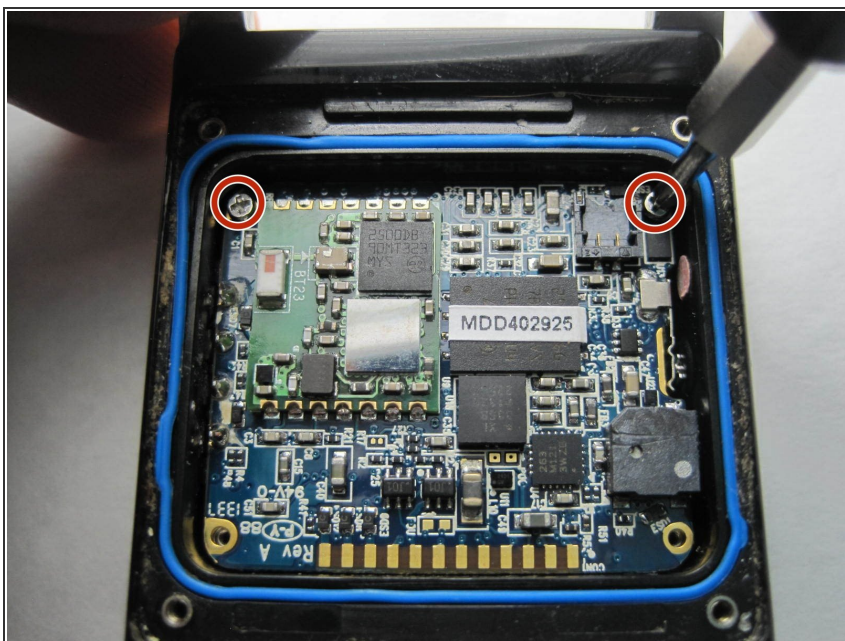
- Use the pointy edge of the spudger tool to detach battery leads from the circuit board.

Step 7 — LED Screen



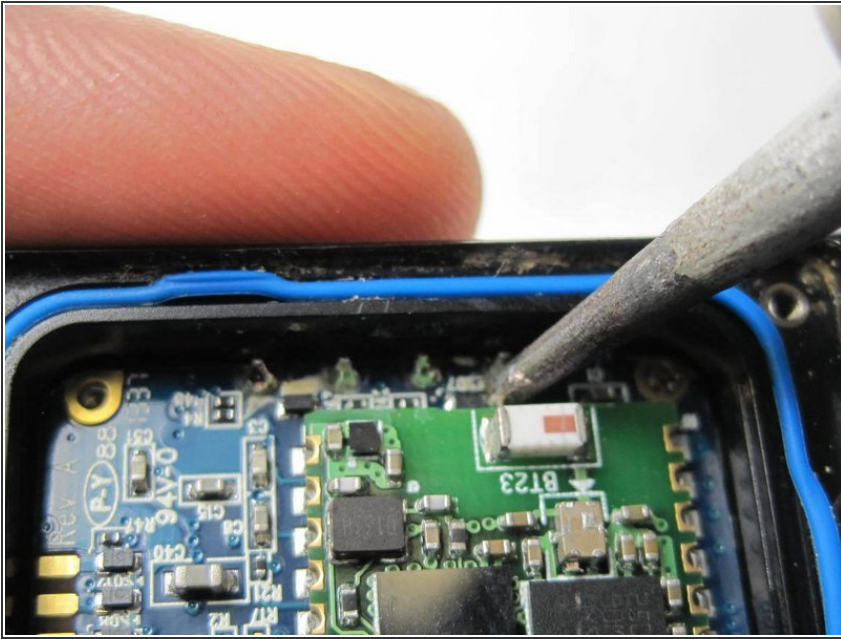
- Use PH000 screw driver to remove two 6mm bracketed screws.
- Remove bracket.

Step 8



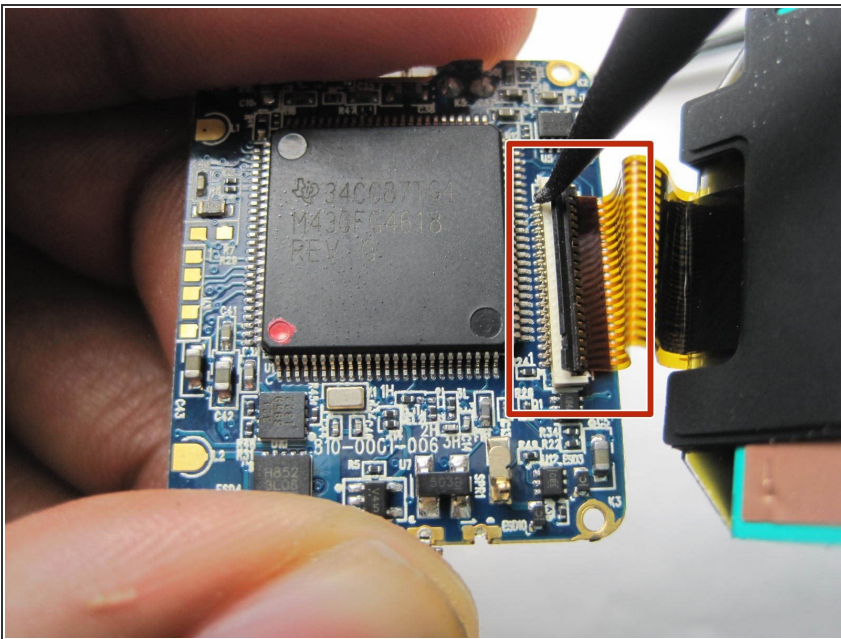
- Use PH000 tool to remove two 4mm screws.

Step 9



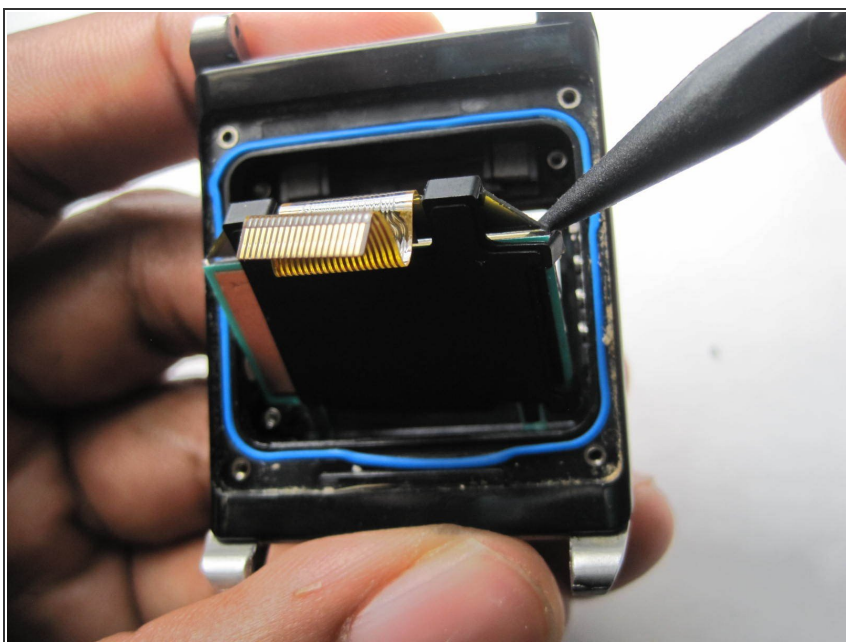
- [Desolder](#) the four connecting pins.

Step 10



- Use spudger tool to lift the clasp of LED connector strip and remove from watch case.

Step 11



- Use spudger tool to remove the LED screen from the watch case.

To reassemble your device, follow these instructions in reverse order.