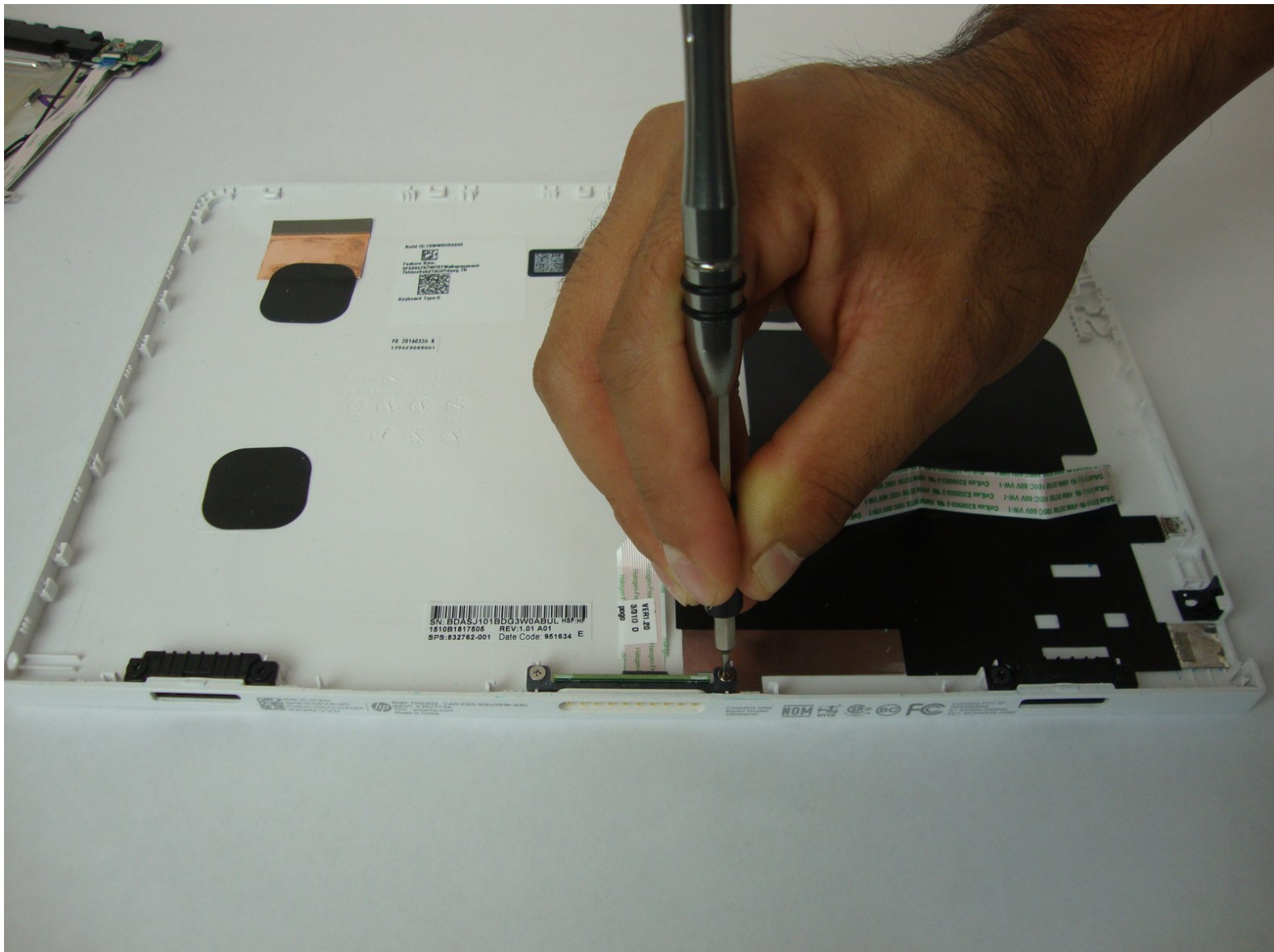




HP Pavilion x2 10-n113dx Hinge Connector Replacement

How to replace and repair the hinge connector of the HP Pavilion x2 10-n113dx.

Written By: David Zambrano



INTRODUCTION

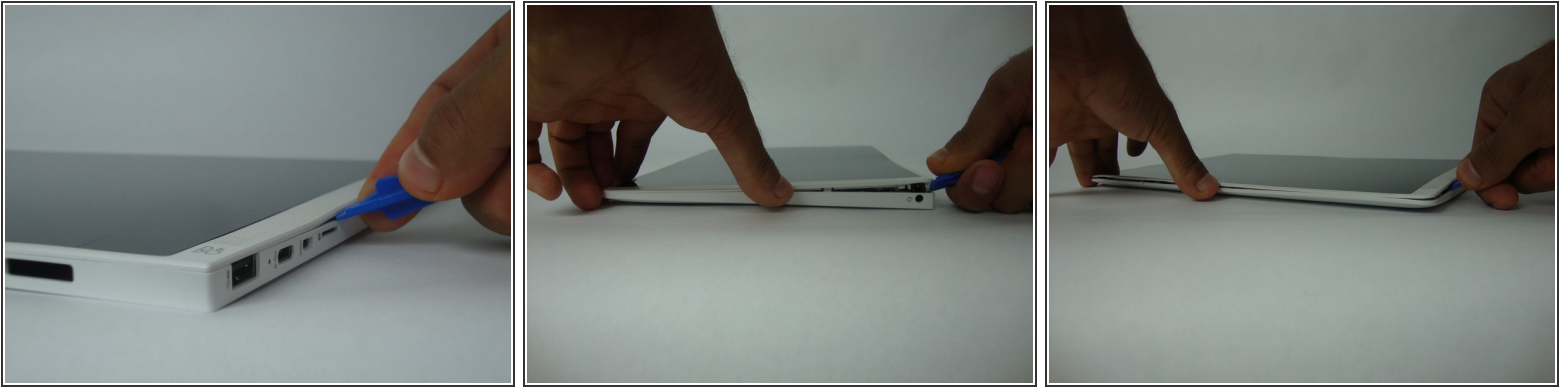
Use this guide to replace the hinge connector of your device.




TOOLS:

- [iFixit Opening Tools](#) (1)
 - [Phillips #0 Screwdriver](#) (1)
 - [Precision Tweezers Set](#) (1)
-

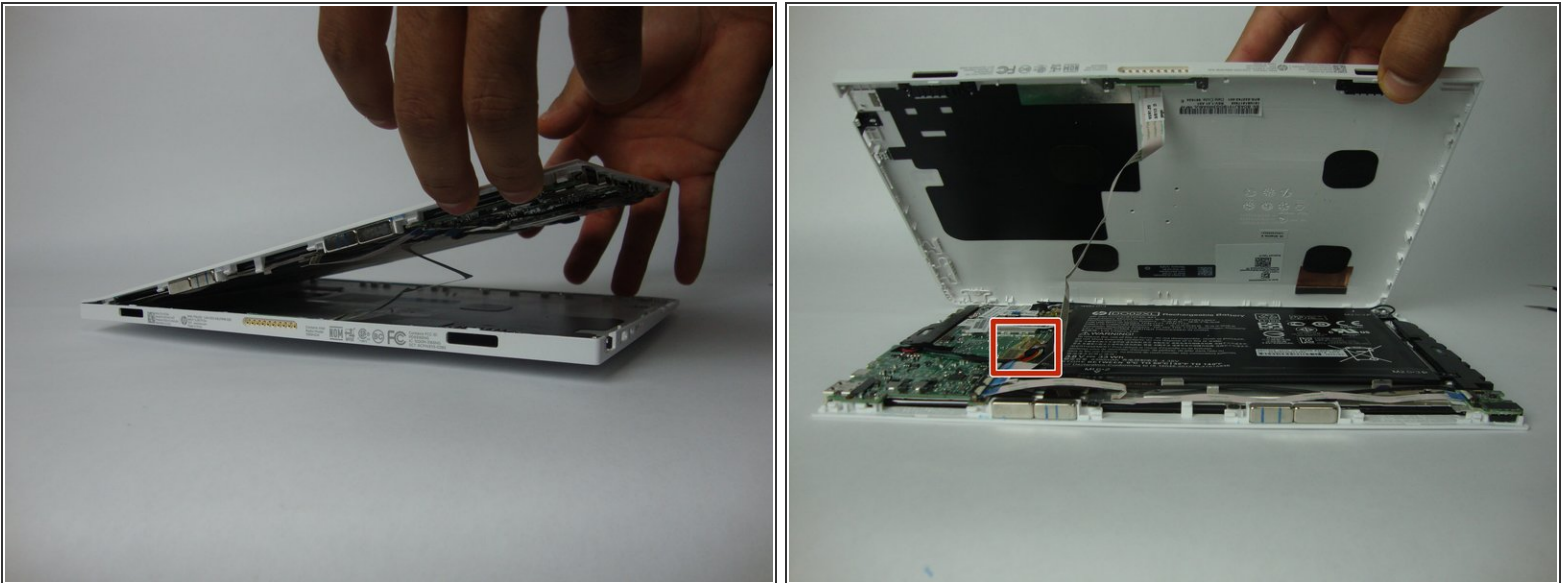
Step 1 — Battery




 Before starting, please turn off your laptop.

- Using the blue plastic opening tool or a flat bladed tool, carefully slide the blade in between the display panel and gently slide to prop open the assembly.

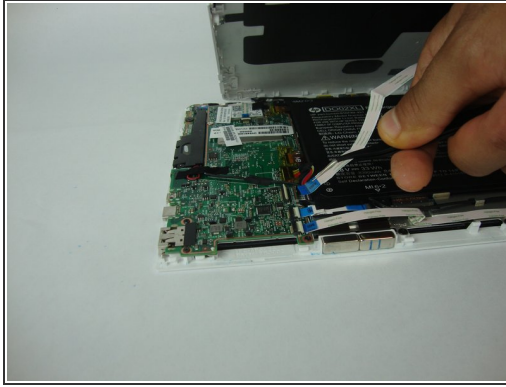
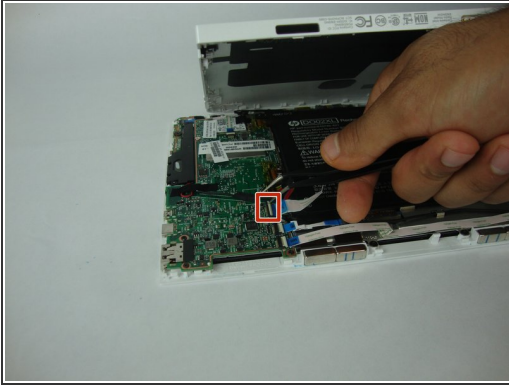
Step 2



- Gently lift and remove the display panel from the assembly.
- Remove the translucent yellow tape that covers the battery connector on the mainboard.

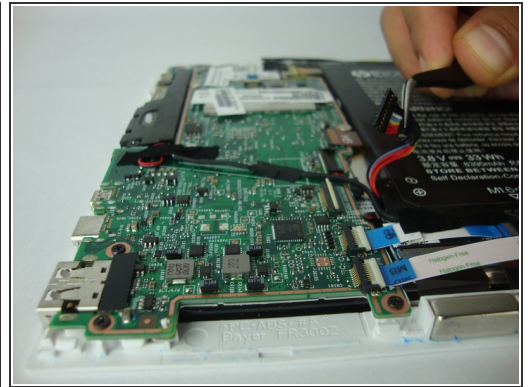
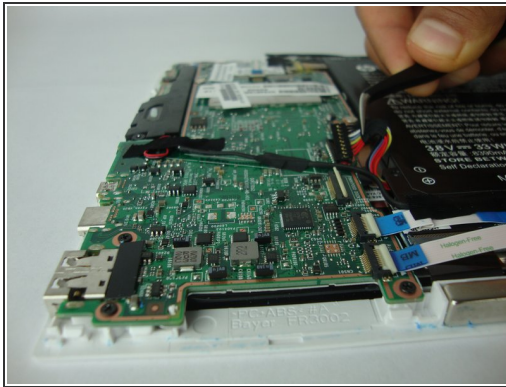
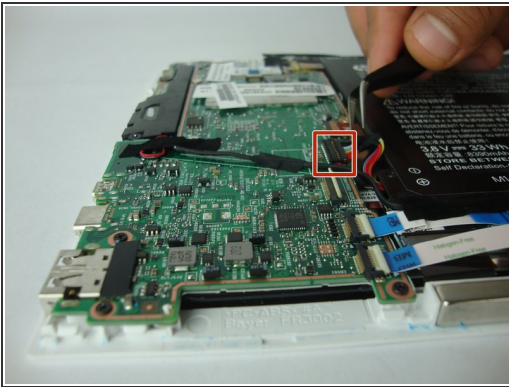
 The tape will be in the way for a future step.

Step 3



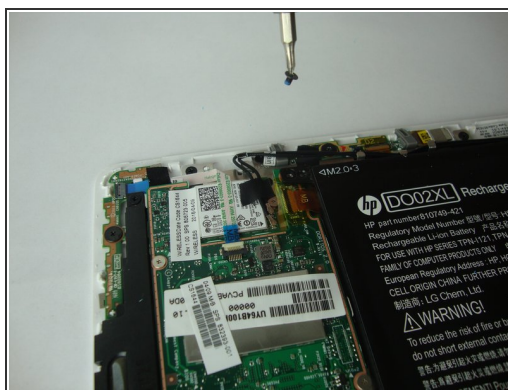
- Flip up the small white colored locking flap using the tip of a spudger or your fingernail. Then the ribbon cable can be removed easily without much effort.
- Carefully disconnect the white ribbon cable from the mainboard.

Step 4



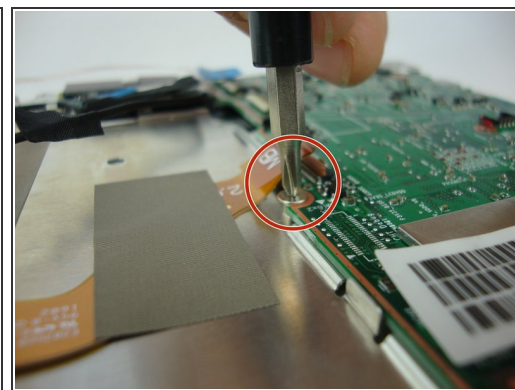
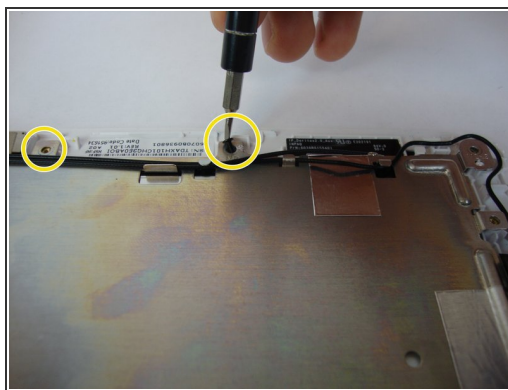
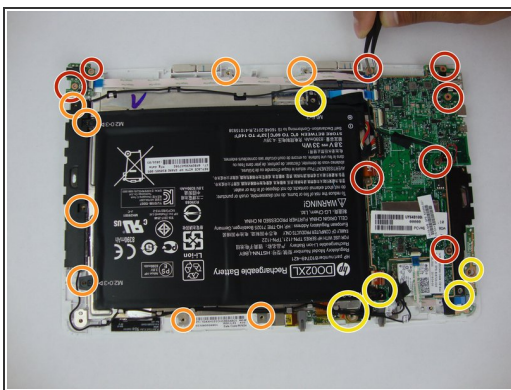
- Carefully disconnect the battery cable from its connector on the mainboard.

Step 5



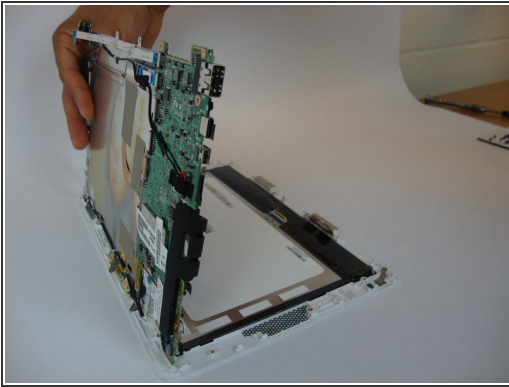
- Using the Phillips #0 screwdriver, carefully remove the 4 corner screws that hold the battery to the display panel.
- ⓘ 3 screws are 3.12 mm head, 2.40 mm length, and 1 screw is 5.85mm head, 2.5mm length.
- Remove the battery from the device.

Step 6 — Screen



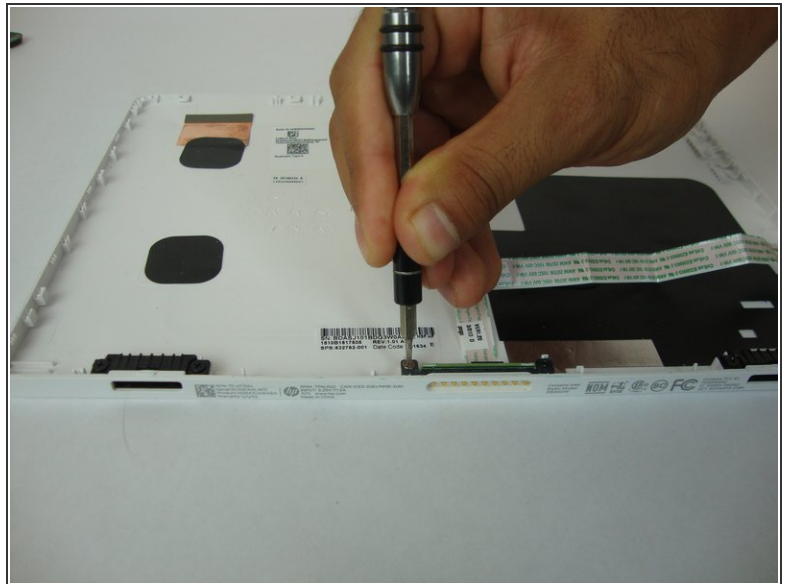
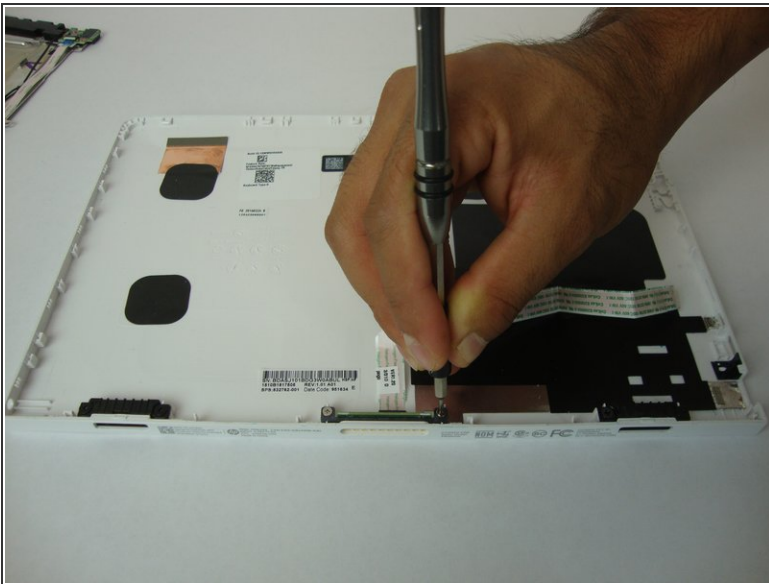
- Using the Phillips #0 screwdriver, carefully remove the 21 screws that hold the screen to the display panel. 3.32 mm head, 3.99 mm length (RED) , 2.82 head 3.5 mm length (YELLOW), and 4.15 mm head, 2.35 mm length (BLUE).
- 3.32 mm head, 3.99 mm length.
- 2.82 head 3.5 mm length.
- 4.15 mm head, 2.35 mm length.

Step 7



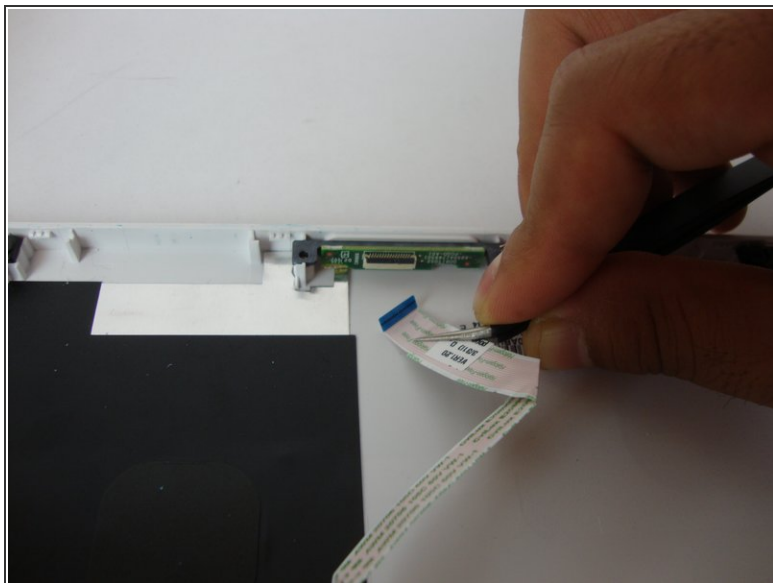
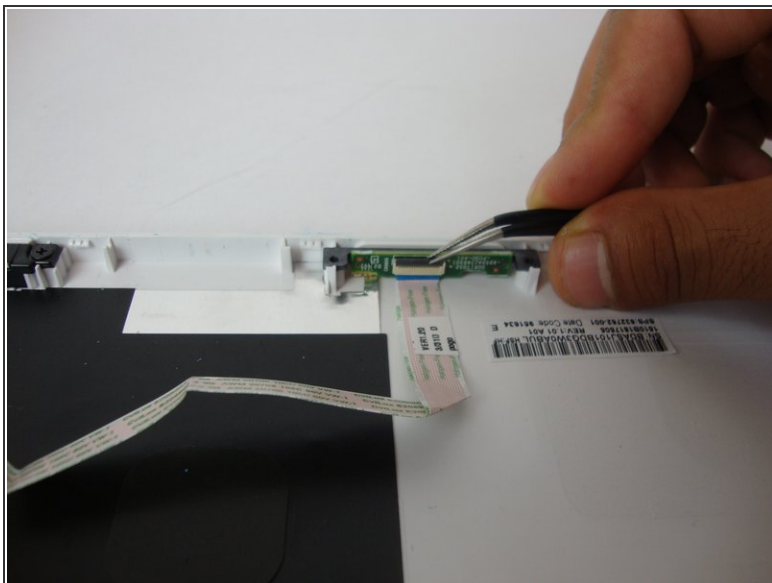
- Very carefully lift the circuit board in order to keep everything attached. Be careful with any cables that may still be connected.

Step 8 — Hinge connector



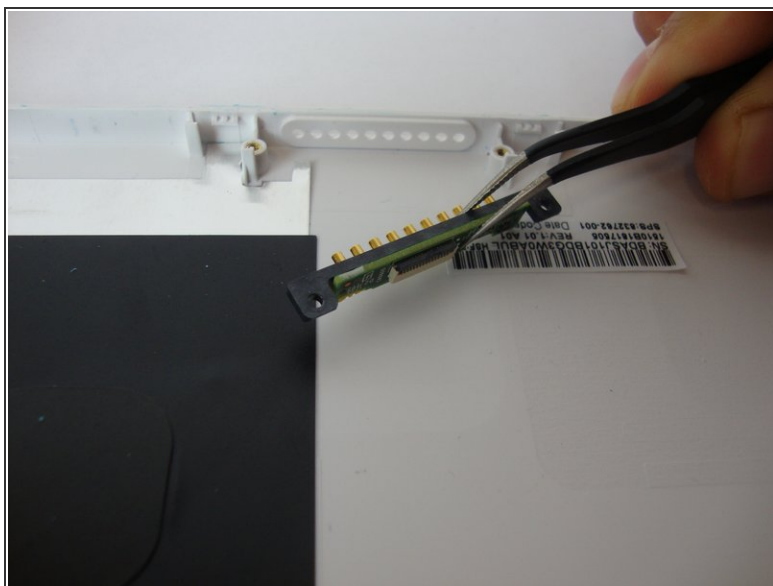
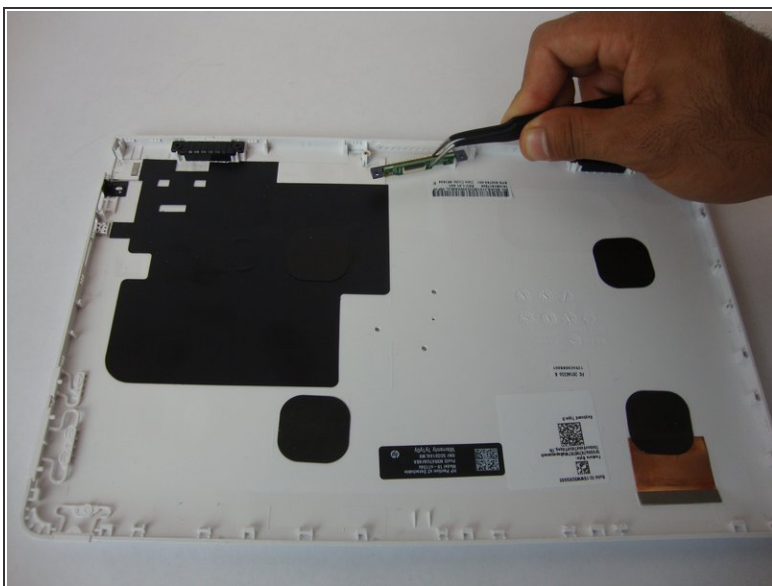
- Use the Phillips #0 screwdriver to unscrew 2 screws 2.82 mm head 3.5 mm length from the hinge connector

Step 9



- Use the tweezers to gently remove the white pogo board ribbon from the hinge connector.

Step 10



- Gently remove the hinge connector from the display panel.

To reassemble your device, follow these instructions in reverse order.