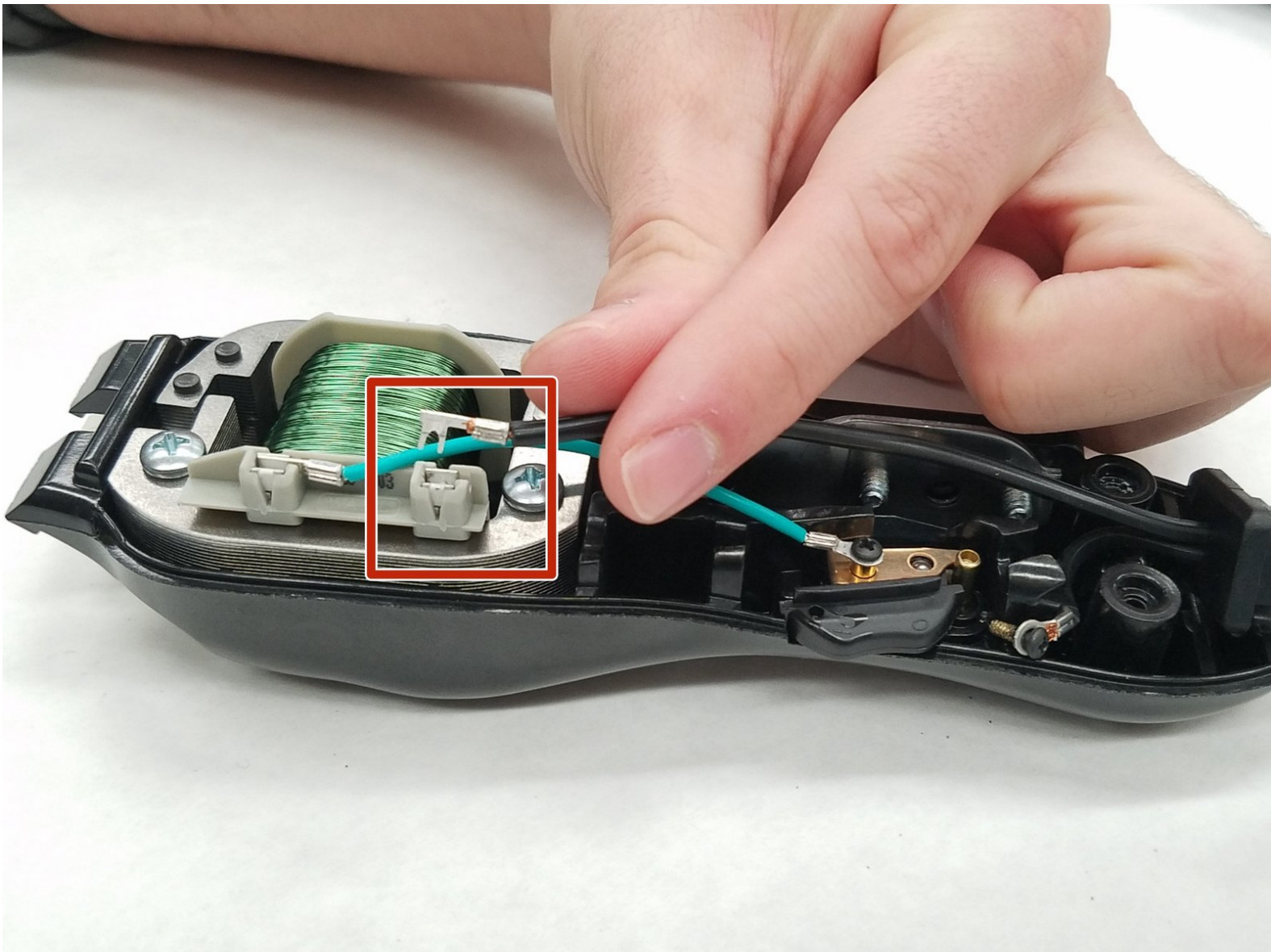




# Wahl Chrome Pro Motor Replacement

This guide will provide instructions on how to replace the motor cord from Wahl Chrome Pro.

Written By: Ashley Dale



## INTRODUCTION

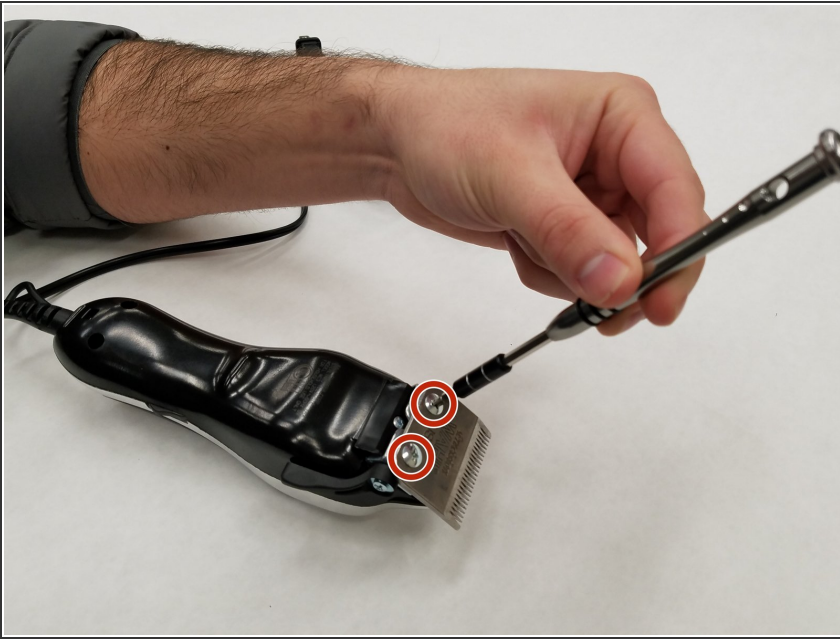
The motor drives the clipper blades. Motors can wear out after extended use. Replacing a worn-out motor can extend the longevity of this device.

---

### TOOLS:

- [Phillips #2 Screwdriver](#) (1)
  - [Spudger](#) (1)
  - [Tweezers](#) (1)
  - [Phillips #1 Screwdriver](#) (1)
-

## Step 1 — Case



- Remove the two 5.0 mm JIS #1 screws to loosen the cutting blades.
- ⚠ Make sure your device is not connected to power before you begin.

## Step 2



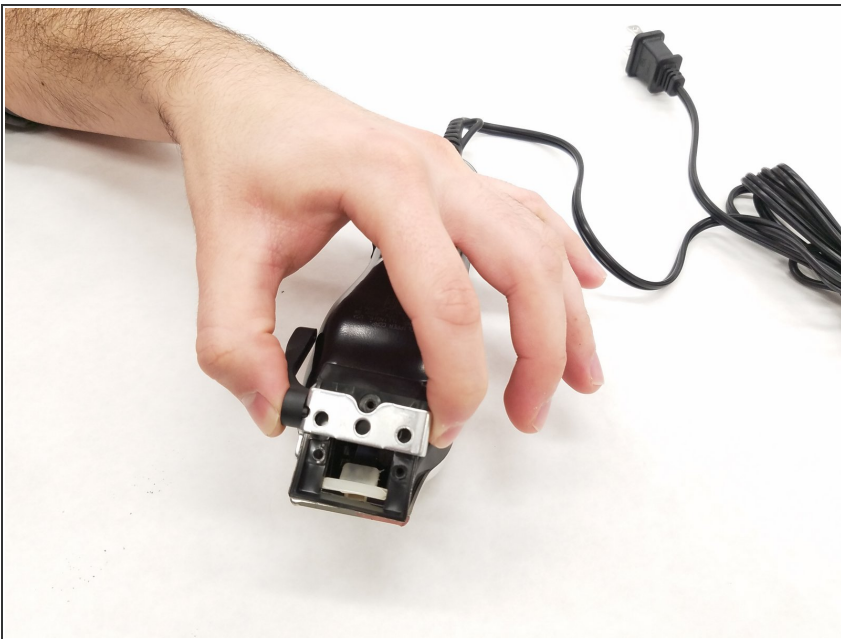
- Lift the bottom blade straight up from the device body to remove it.

### Step 3



- Remove the three 9.0 mm JIS #1 screws attaching the base of the blade assembly to the body.

### Step 4



- Lift the base of blade assembly straight up off of the body.

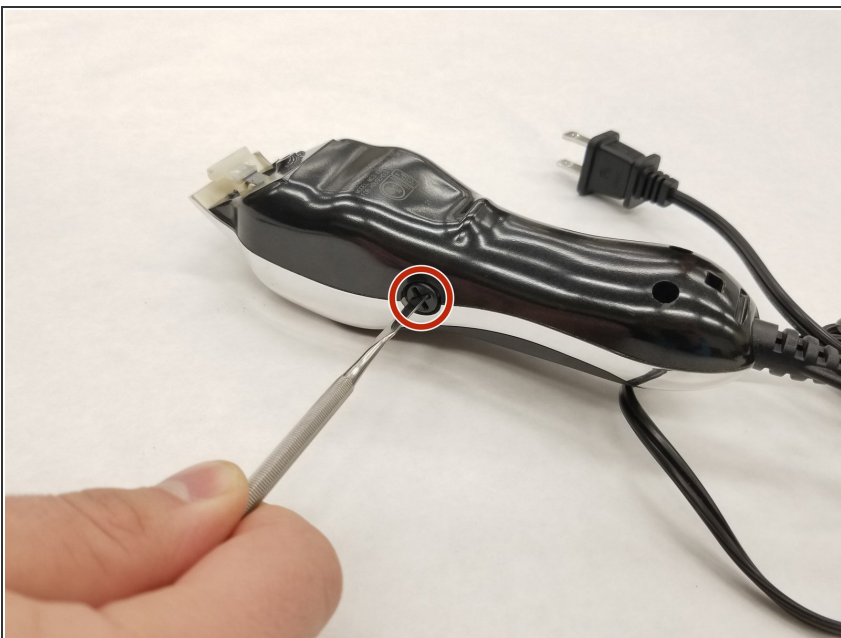


## Step 5



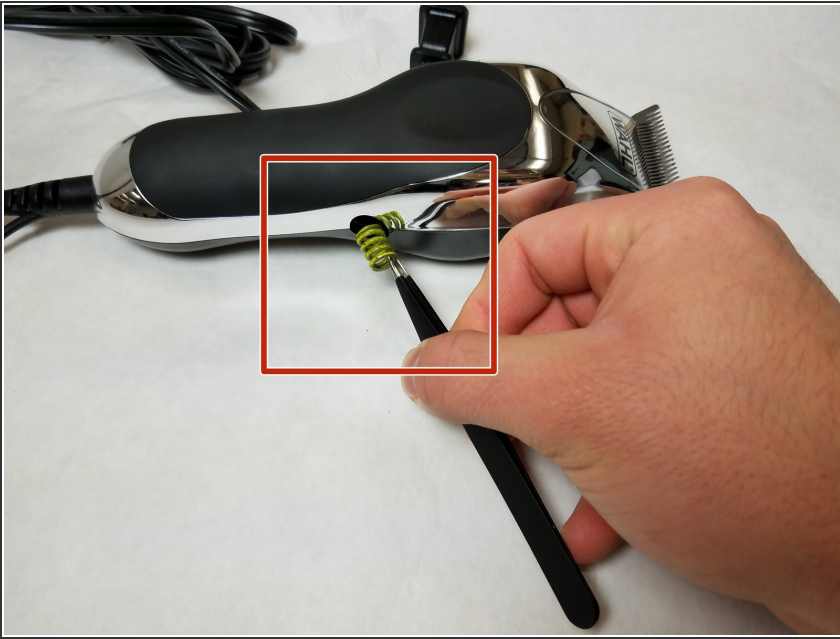
- Remove the two 12.0 mm JIS #1 screws on the back of the device body.

## Step 6



- Remove the 13.0 mm Phillips #2 screw on the side of the device body.
- This screw is located on the opposite side of the body from the switch.

## Step 7



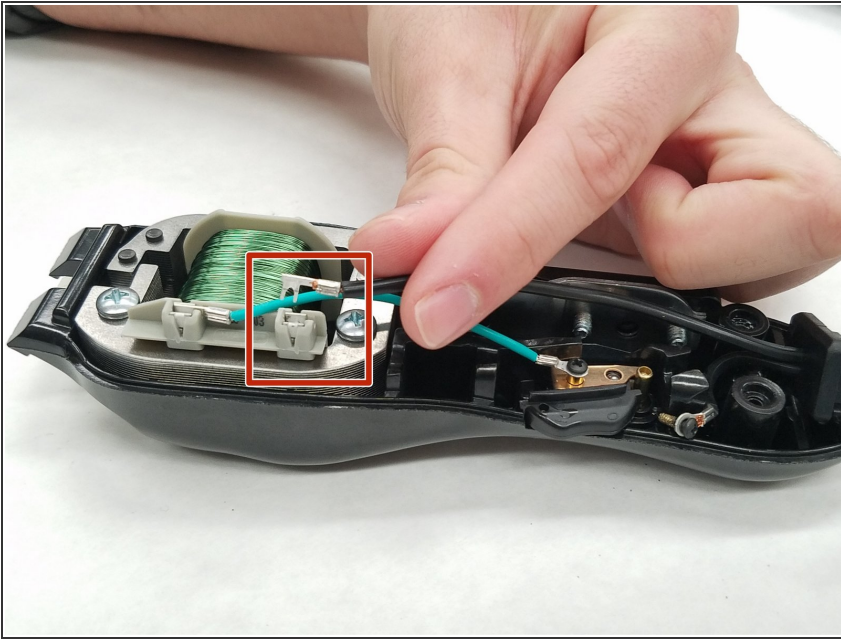
- Remove the spring on the side of the body using tweezers.

## Step 8



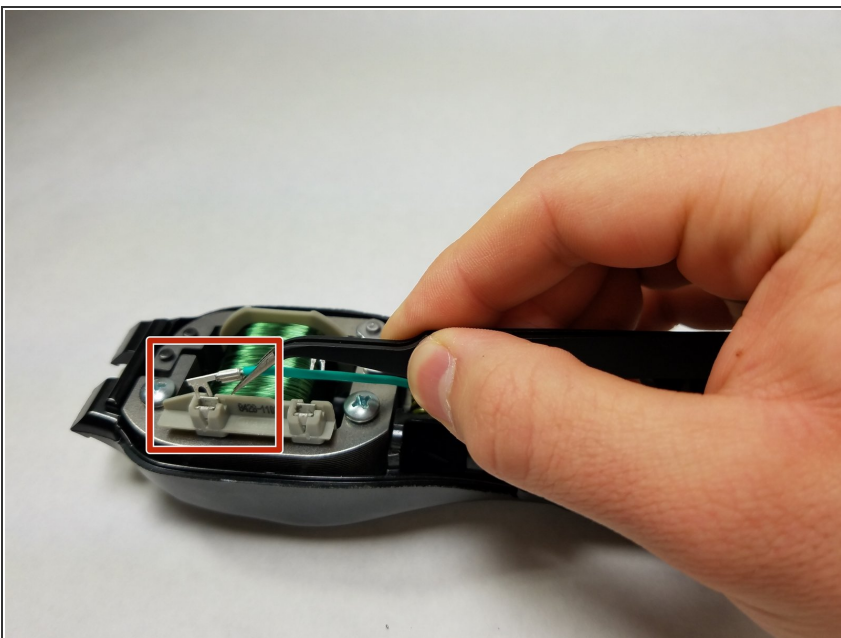
- Pry the body case off of the device using a spudger.

## Step 9 — Motor



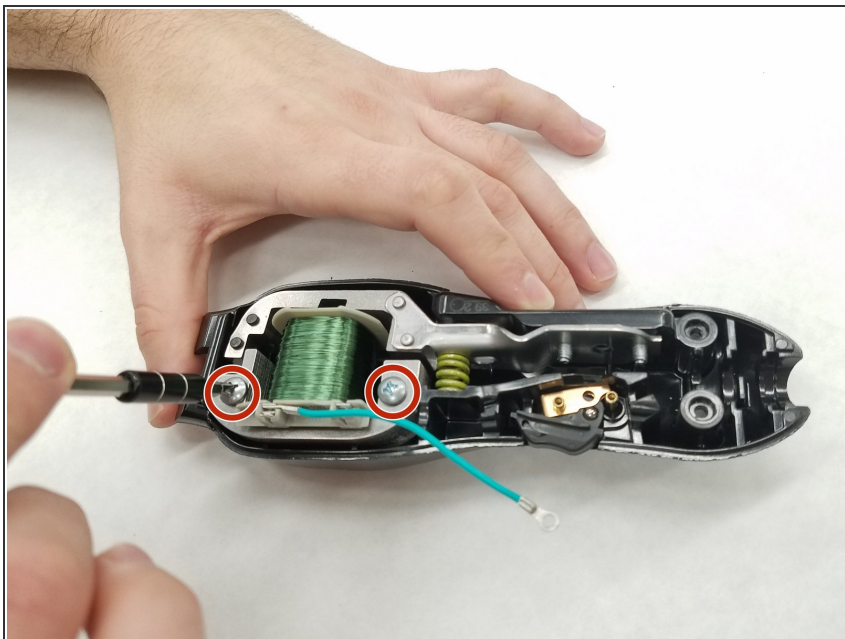
- Lift power cord tab (black wire) from slot on motor base.

## Step 10



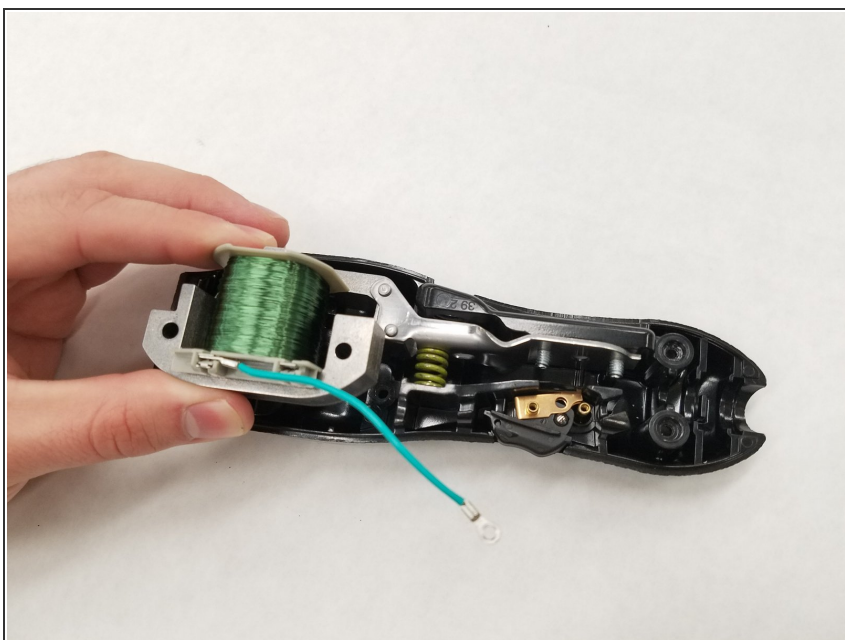
- Lift switch tab (teal wire) from slot on motor base.

## Step 11



- Remove two 23.0 mm JIS #1 screws attaching motor base to device body.

## Step 12



- Lift motor base straight up from device body to remove.

To reassemble your device, follow these instructions in reverse order.