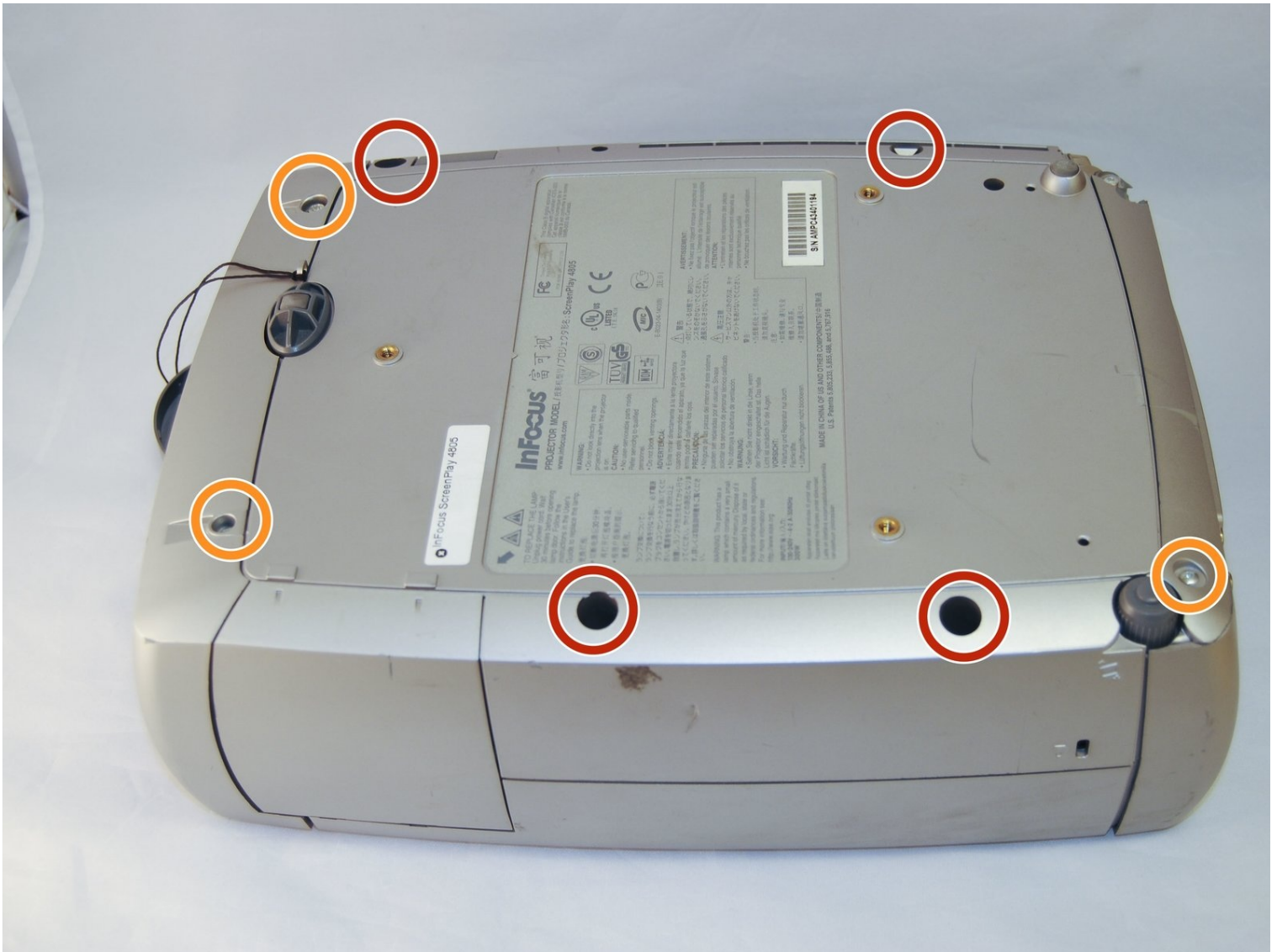




# InFocus Screenplay 4805 Top Panel Replacement

This guide shows how to open up the projector....

Written By: Marilyn Urness



# INTRODUCTION

This guide shows how to open up the projector. This will allow for following actions to replace parts.

## TOOLS:

Metal Spudger (1)

Phillips #2 Screwdriver (1)

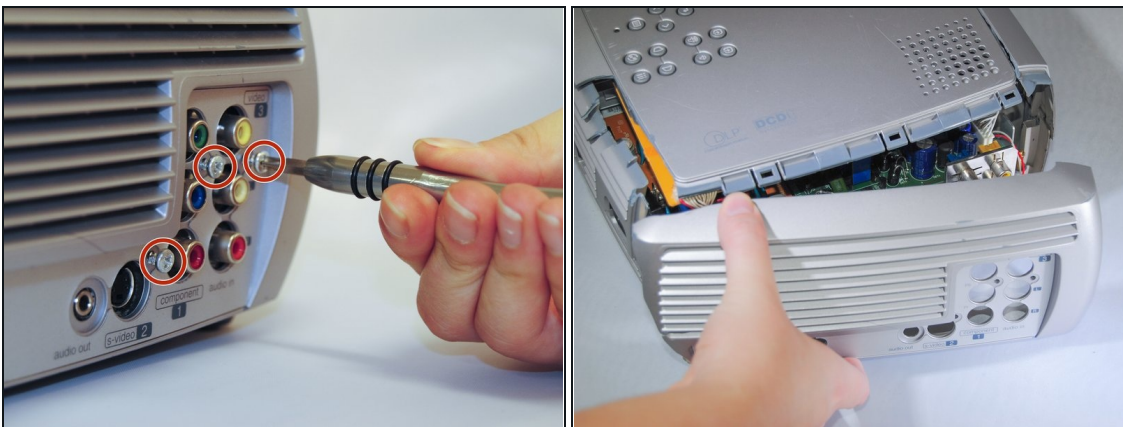
Phillips #0 Screwdriver (1)

## Step 1 — Top Panel



- Flip the projector on its back.
- Use the Phillips #2 screwdriver to remove the (4) four 2 cm gold screws.
- Use the Phillips #2 screwdriver to remove the (3) three 1 cm silver screws.

## Step 2



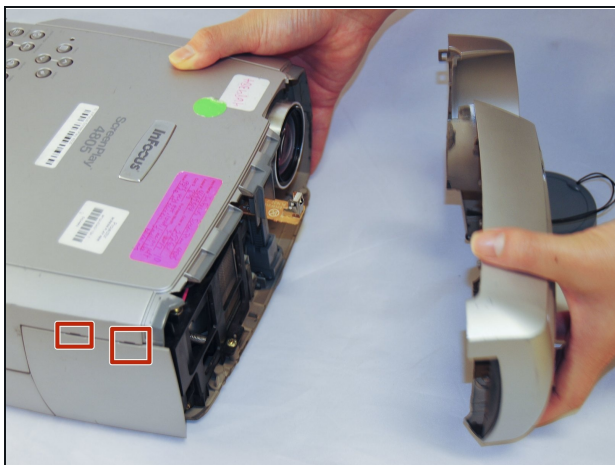
- Turn the projector, facing the back cable board towards you.
- Using the Phillips #0 screwdriver, remove the (3) three 1.0 cm silver screws on the back panel.
- Gently take off back cable panel.

### Step 3



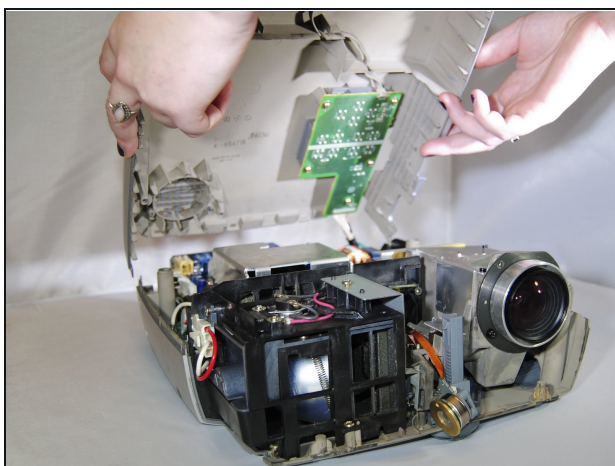
- Turn the projector so the front side with the lens is facing you.
- Gently pry the both of the grey lens rings using the metal spudger.

### Step 4



- Now that the screws have been removed, proceed with the removal of the outer panel.
- Gently remove the front lens panel.
- ⓘ Be forewarned, the panel will resist. Be careful not to break the lens.

### Step 5



- Being careful not to pull the wires inside the projector, gently lift the top panel off the projector.
- ⓘ Rest the lid behind the projector so the insides are exposed and undamaged.