



# Asus Q302UA-BHI5T20 WAN Card Replacement

This guide will be replacing the WAN Card.

Written By: crystal Agwuncha



---

## INTRODUCTION

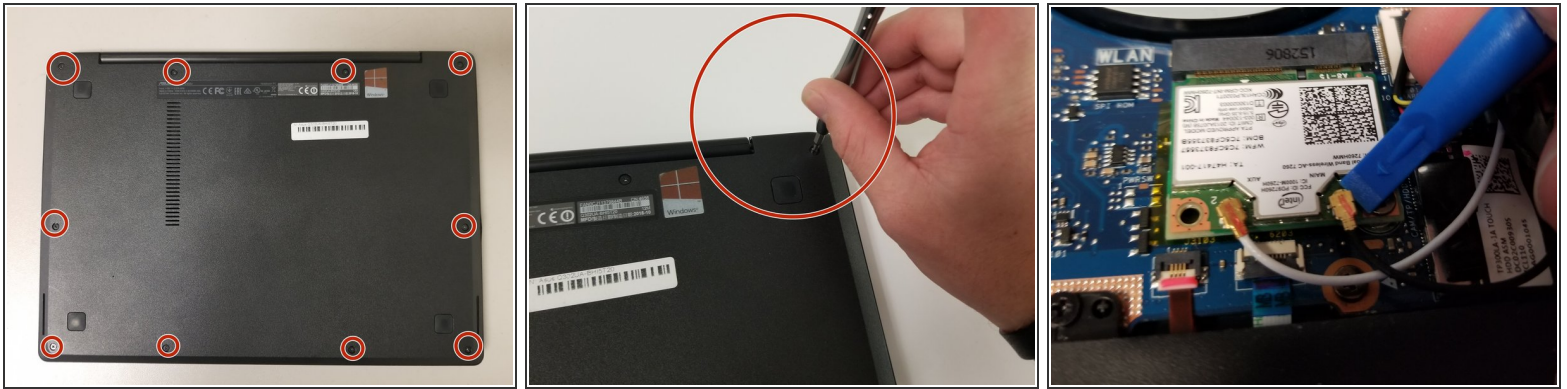
This guide will be replacing the WAN Card.



### TOOLS:

- [iFixit Opening Tools](#) (1)
  - [Phillips #0 Screwdriver](#) (1)
-

## Step 1 — WAN Card



- Turn over the laptop and remove cover by unscrewing highlighted screws
- Take blue pry tool in ifixit toolkit and pull up the antenna connector

## Step 2



- Locate black screw located around antenna and unscrew it
- ⚠ WAN will pop up from opposite pressure

To reassemble your device, follow these instructions in reverse order.