



# Dell Inspiron 15-7559 Hard Drive Replacement

This guide will demonstrate how to replace the hard drive for the Dell Inspiron 15-7559.

Written By: Trenton Greevebiester



# INTRODUCTION

This guide will demonstrate how to replace the hard drive for the Dell Inspiron 15-7559. This may be necessary if your laptop frequently crashes or if you're having issues booting it.



## TOOLS:

- [iFixit Opening Tool](#) (1)
- [Phillips #1 Screwdriver](#) (1)



## PARTS:

- [1 TB SSD / Upgrade Bundle](#) (1)
- [250 GB SSD / Upgrade Bundle](#) (1)
- [500 GB SSD / Upgrade Bundle](#) (1)
- [2 TB SSD](#) (1)

## Step 1 — Back Panel



- Turn off the computer.
- Disconnect the charging cable from the computer.
- ⚠ Failure to turn off the device and disconnect the cable could lead to personal injury or device damage.
- Flip the computer upside down.

## Step 2



- Remove the captive screw located on the top section of the back panel, using a Philips #1 screwdriver.
- ⓘ Keep in mind that the screw cannot be fully removed from the panel, even when fully loosened.

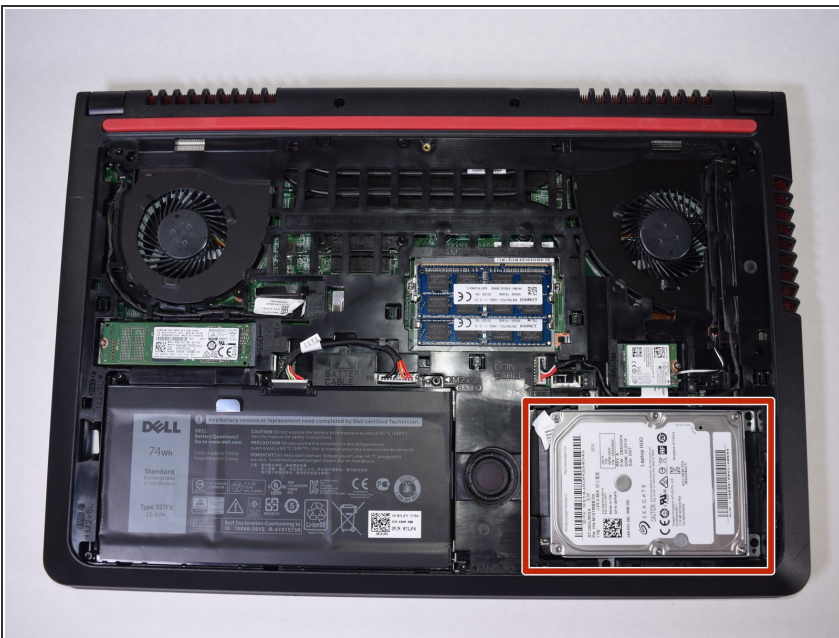


### Step 3



- Use the blue, plastic opening tool to gently pry a section of the back panel open.
- Next slide the opening tool around the back panel to disconnect the clips holding the panel in place.
- After the clips have been disconnected, the back panel can then be easily lifted off the computer.

### Step 4 — Hard Drive



- Locate the hard drive on the bottom right side of the laptop.

## Step 5



- Unscrew the 4 x 2.5mm x 5mm screws, using the Philips #1 screwdriver.

## Step 6



- Using your hands, raise the hard drive far enough to disconnect the cables attached to it.
- Using your hand grab the black portion connecting the cables to the battery and disconnect it.

**⚠ Do not pull on the cables directly. This would risk damaging them or tearing them from the device.**

To reassemble your device, follow these instructions in reverse order.