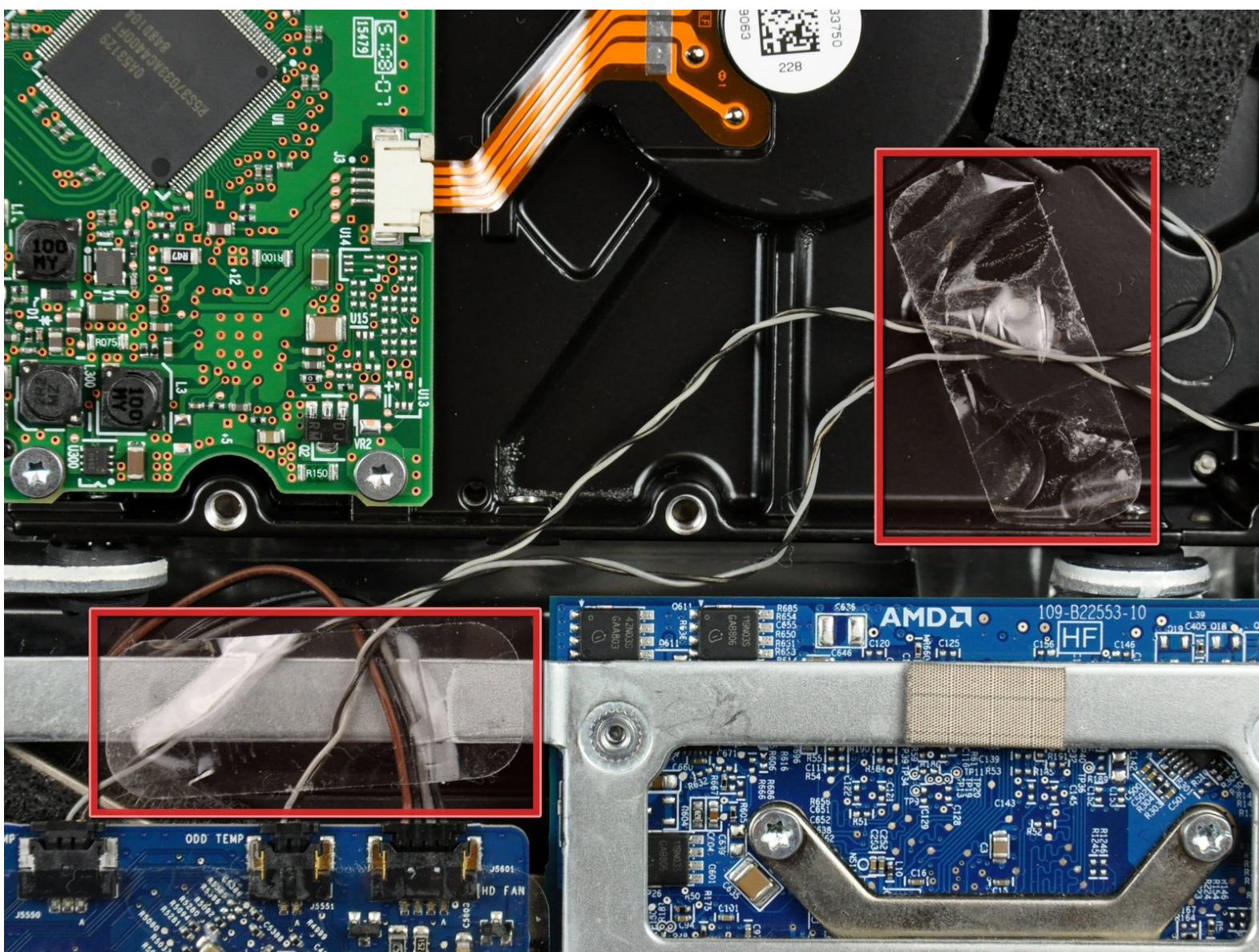




# iMac Intel 20" EMC 2133 and 2210 Hard Drive Replacement

Written By: Walter Galan

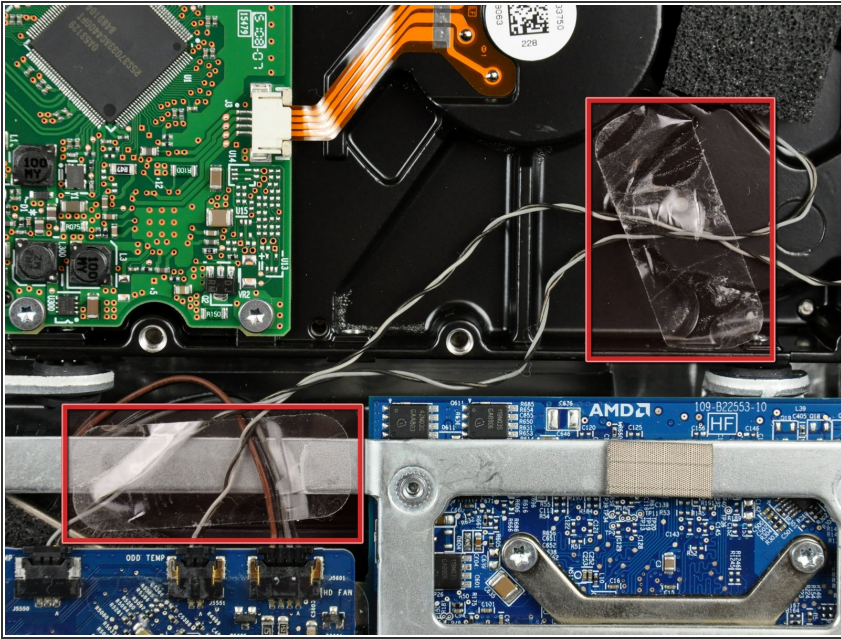


# INTRODUCTION

Use this guide to install a hard drive in your iMac Intel 20" EMC 2133 or 2210.

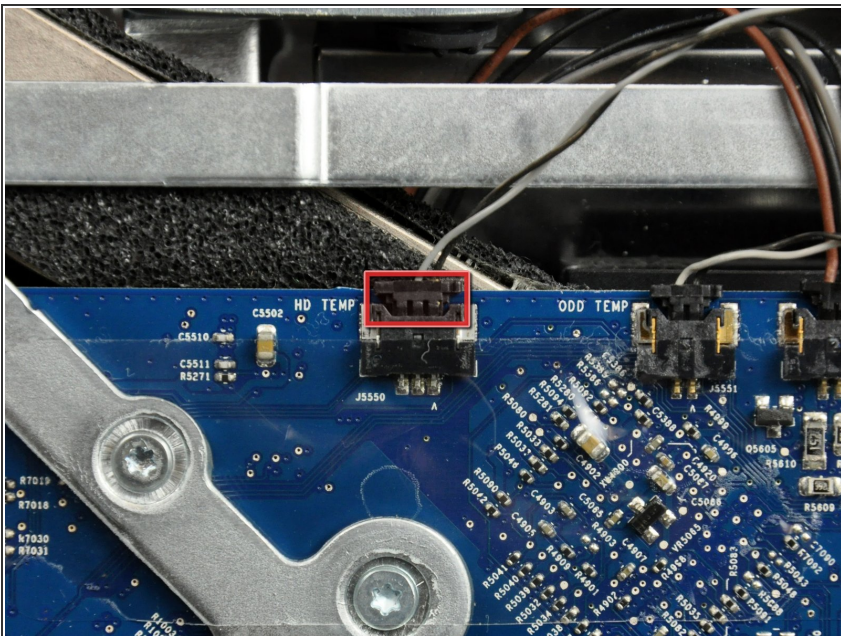


## Step 1 — Hard Drive



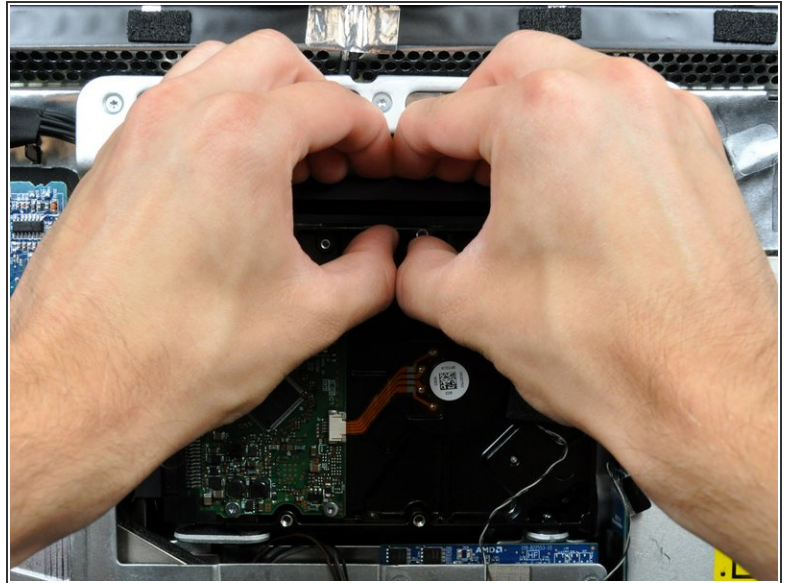
- If necessary, remove the pieces of tape securing the hard drive/optical drive thermal sensor cables to your iMac.


## Step 2



- Disconnect the hard drive thermal sensor by pulling its connector toward the top of your iMac.
- ⓘ When removing this connector, it is helpful use your thumbnails to push the ears on either side of the connector toward the top of your iMac.

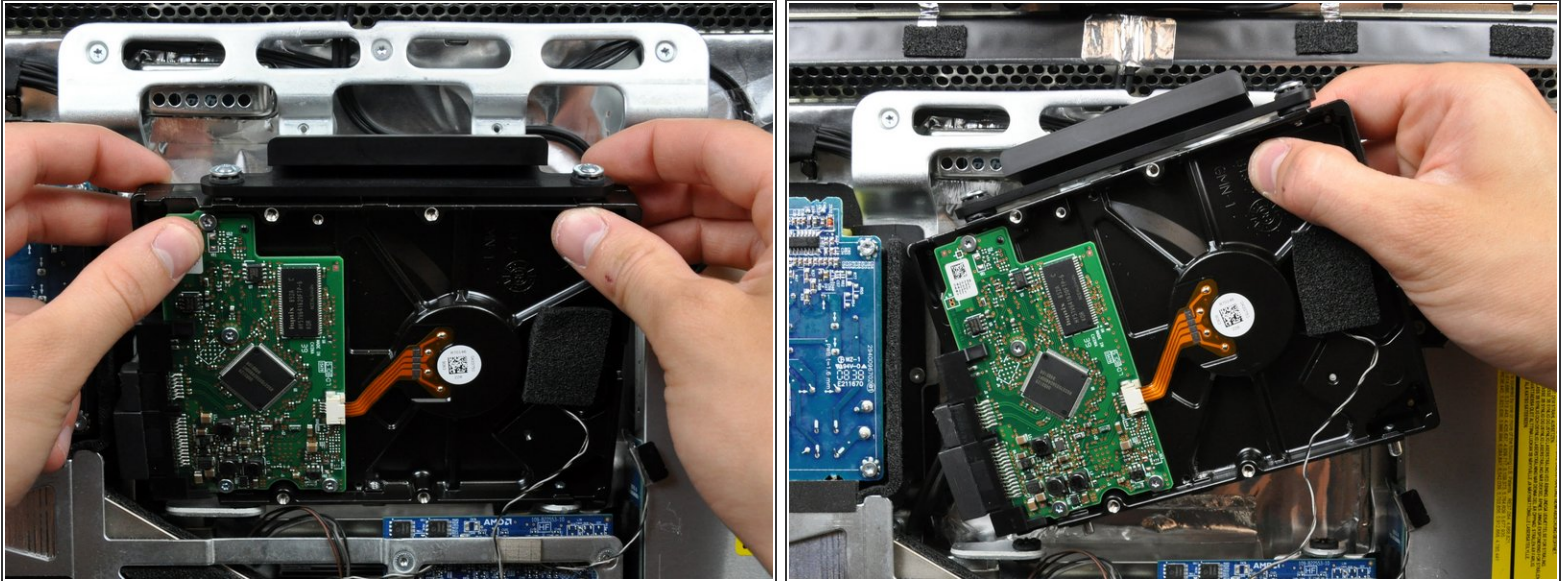
## Step 3



-  Pressing the top of the hard drive bracket down to release it from the rear case requires a substantial amount of force. We recommend laying your iMac stand-side down on a table to avoid knocking it over.
- Press the hard drive bracket down toward the bottom edge of your iMac to free it from the rear case, then rotate the top of the drive toward yourself.



## Step 4

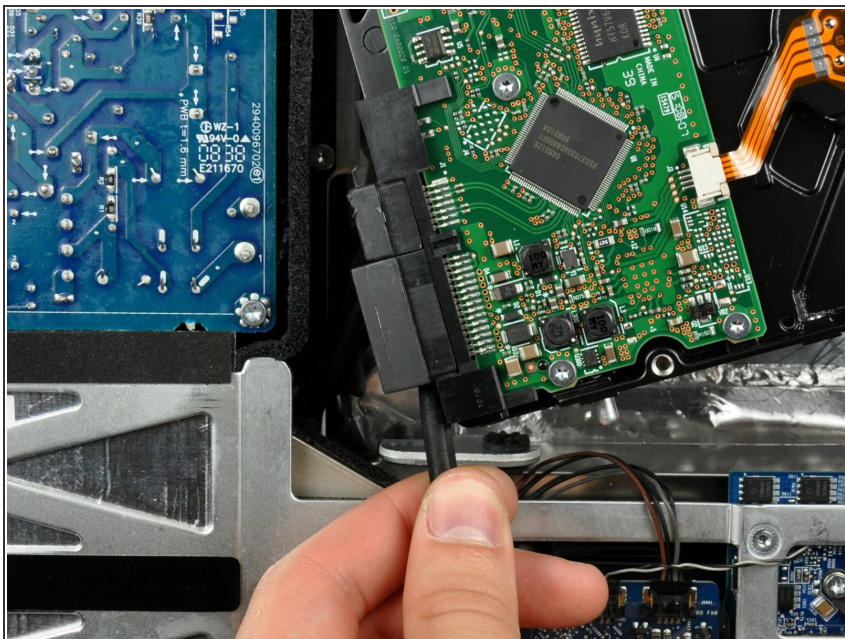


- Rotate the hard drive toward yourself, then lift it up off its mounting pins.

⚠ The hard drive is still connected via the SATA cables.

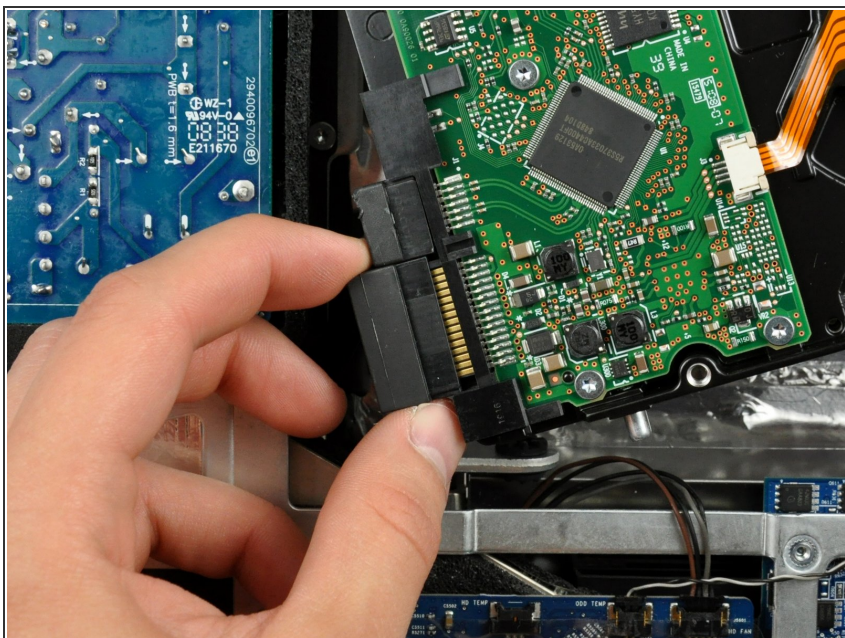
- ☞ When reinstalling your hard drive, be careful not to push the rubber grommets through the openings in the chassis with the lower hard drive pins as retrieving them may require logic board removal.

## Step 5



- Insert the flat end of a spudger between the SATA power cable connector and the edge of the hard drive.
- Twist the spudger to separate the connector from the hard drive.

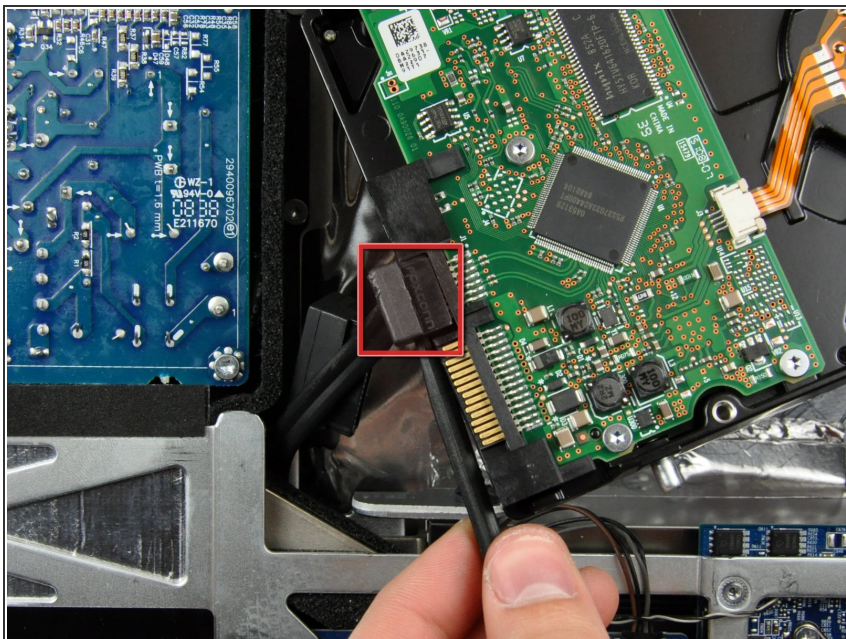
## Step 6



- Pull the SATA power connector away from the hard drive.



## Step 7



- Disconnect the SATA data cable by pulling its connector away from the hard drive.

To reassemble your device, follow these instructions in reverse order.