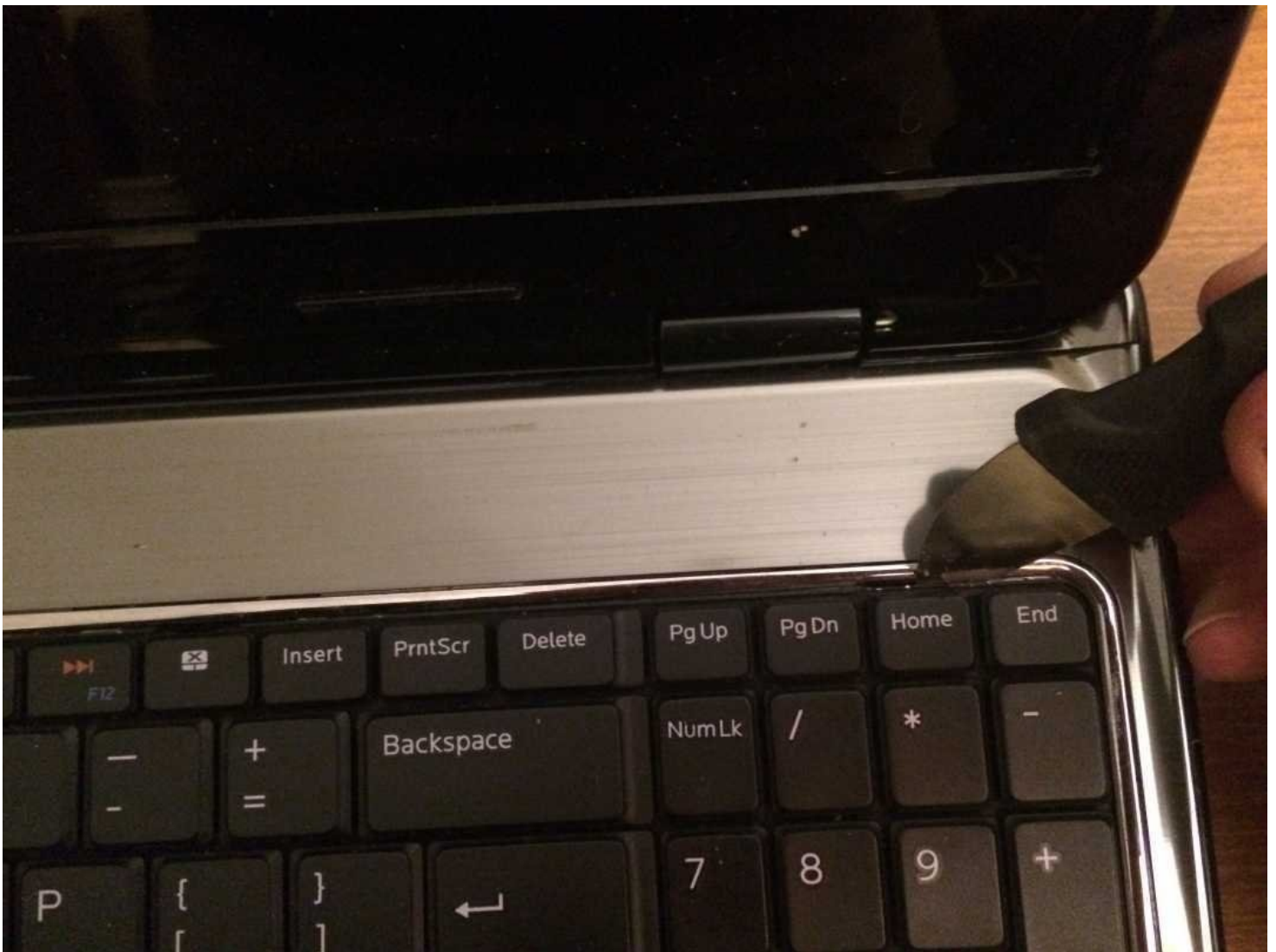




Dell Inspiron 15 (N5010) RAM, CD/DVD drive or Keyboard Replacement

The RAM and CD/DVD drive are very easy to...

Written By: Philip Le Riche



INTRODUCTION

The RAM and CD/DVD drive are very easy to replace. There is no need to suffer a damaged or unreliable keyboard as this is quite easy to replace too.

TOOLS:

64 Bit Driver Kit (1)

Jimmy (1)

Step 1 — Battery removal



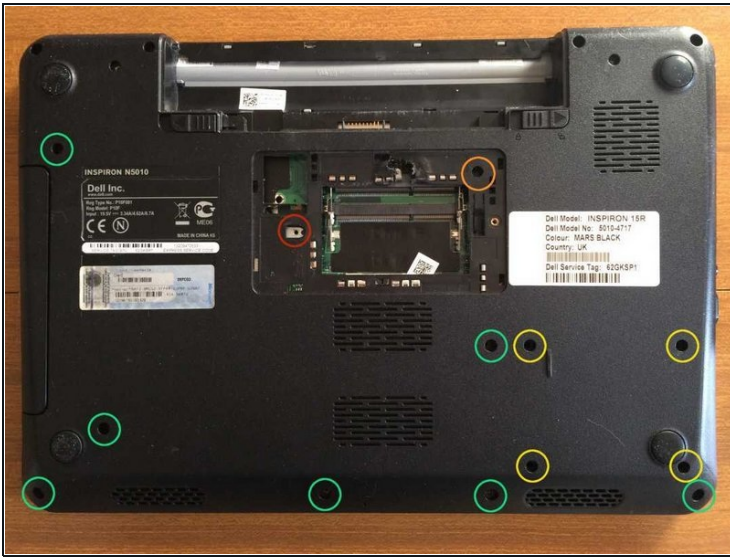
- Turn the laptop over and unlock the battery by sliding the two locking tabs away from each other. The one on the left is spring loaded. Slide the battery out.
- Simply slide the battery out in the direction shown.

Step 2 — RAM removal



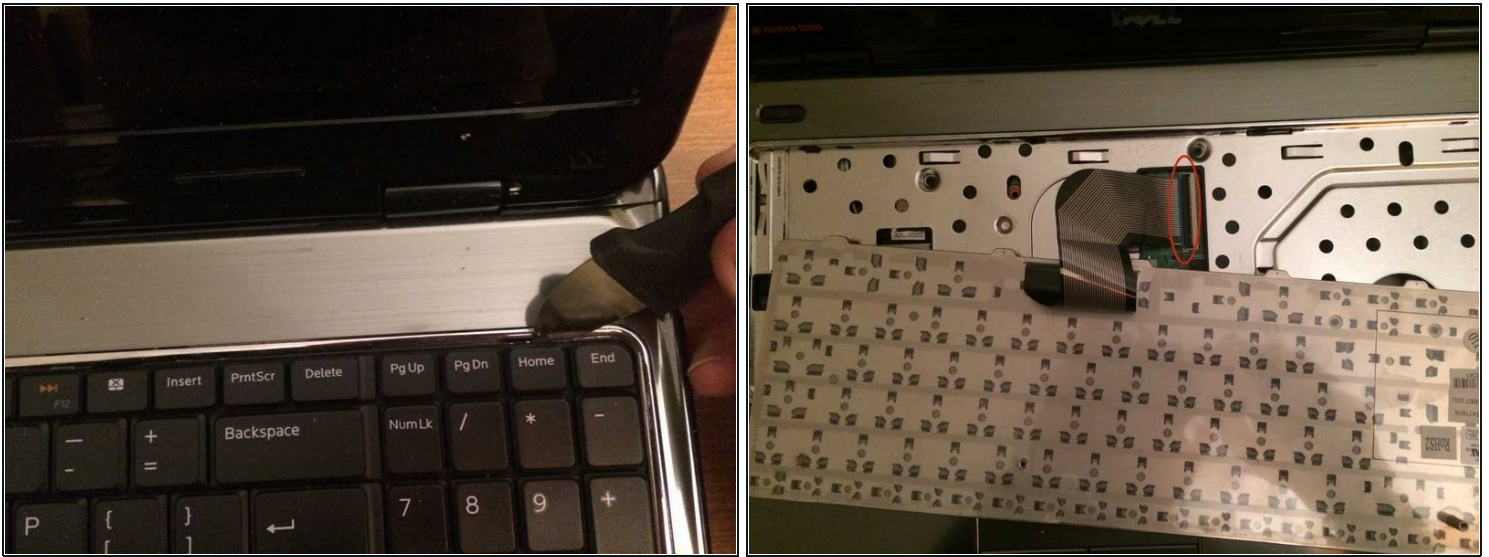
- Undo the locking screw on RAM cover, then prise open the cover.
- Release the RAM module or modules by pushing the metal clips outwards. Put the modules aside.
- ① On reinserting the RAM modules, ensure that they are fully home in their sockets before angling them downwards to engage the clips.

Step 3 — Bottom screws



- ⓘ Note: if the laptop you are working on is a very slightly different model it is possible that it will have a different number of screws in slightly different positions. The important thing is to note where the shorter screws come from so as to avoid inserting a longer screw in its place on reassembly.
- Remove a 5mm screw to the left of the RAM sockets, then pull out the CD/DVD drive. (Not necessary if you are only replacing the keyboard.)
 - Remove a 5mm screw to the right and the rear of the RAM sockets.
 - If you are going to remove the hard disk, motherboard or fan, remove 4 3mm screws.
 - Remove 7 5mm screws. (There are 6 more at the rear which should be left.)

Step 4



- With a thin metal spudger you should now be able to release 4 clips along the top of the keyboard in order to lift it out.

⚠ If you find one or more of the tabs refuse to release, do not force it. You probably missed one (or more) of the screws in the bottom.

- Lift the keyboard slightly from the back, disengaging its tabs along the front panel at the front. Turn it over towards you, taking care not to strain the ribbon.
- Gently lift the locking bar on the ribbon socket and withdraw the ribbon. Put the keyboard aside.

To reassemble your device, follow these instructions in reverse order.