



Trio AXS 3G Screen Replacement

This guide will show you how to replace your...

Written By: Michaela Causey



INTRODUCTION

This guide will show you how to replace your tablet's screen.

TOOLS:

[Phillips #000 Screwdriver](#) (1)

[iFixit Opening Tool](#) (1)

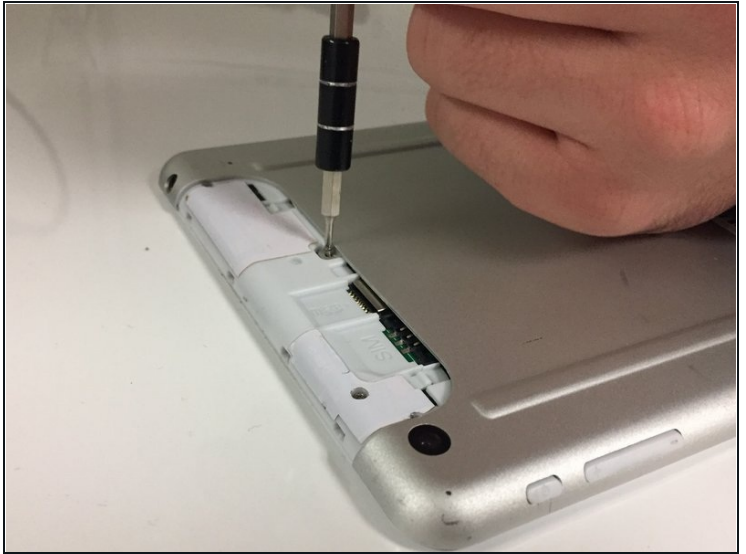
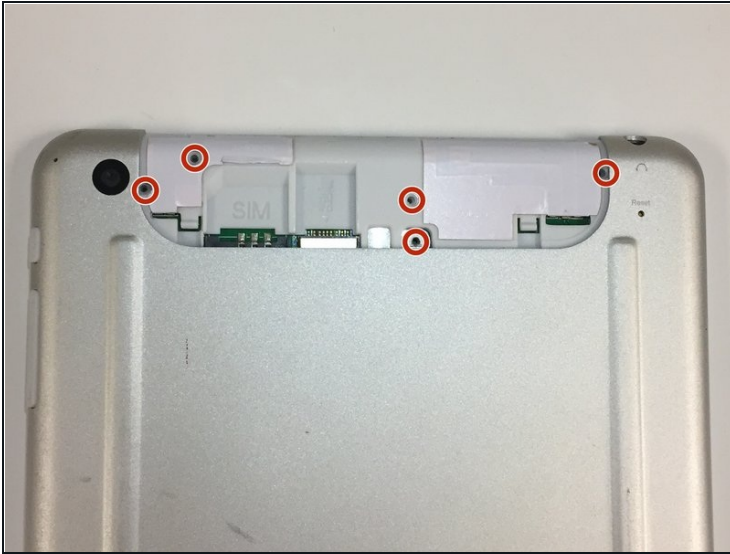
[Plastic Cards](#) (1)

Step 1 — Back Case



- ① On the back of the device there is a white SD card case that shelters the screws that attach the back panel to the tablet.
- Use your thumbs to slide up and off the small SD card case.

Step 2



- Using the Phillips Head #000, unscrew the 5 4mm and 3mm screws at the top.

Step 3



- Insert a plastic opening tool between the back panel and the front of the tablet, and gently pry it away from the tablet.
 - ⚠ Do not pry too hard as the screen is fragile and might crack.
 - ⓘ It is best to start at the bottom of the tablet when prying the back panel off.
 - ⓘ The volume piece will also dislodge when the back panel is removed.

Step 4 — Screen



- ① The motherboard and battery will have to be removed to expose the metal panel underneath.

Step 5



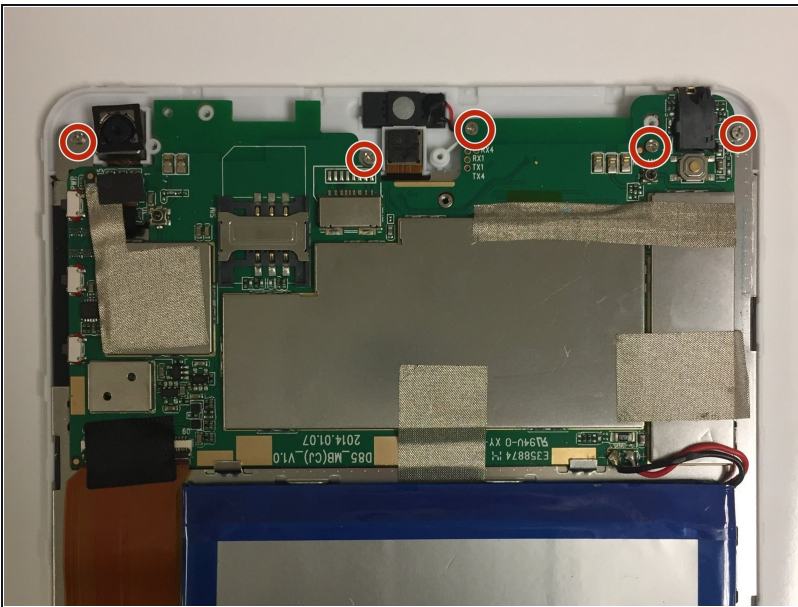
- Use the [plastic card](#) to pry the battery away from the device.
- ① The battery is attached to the tablet by glue.

Step 6



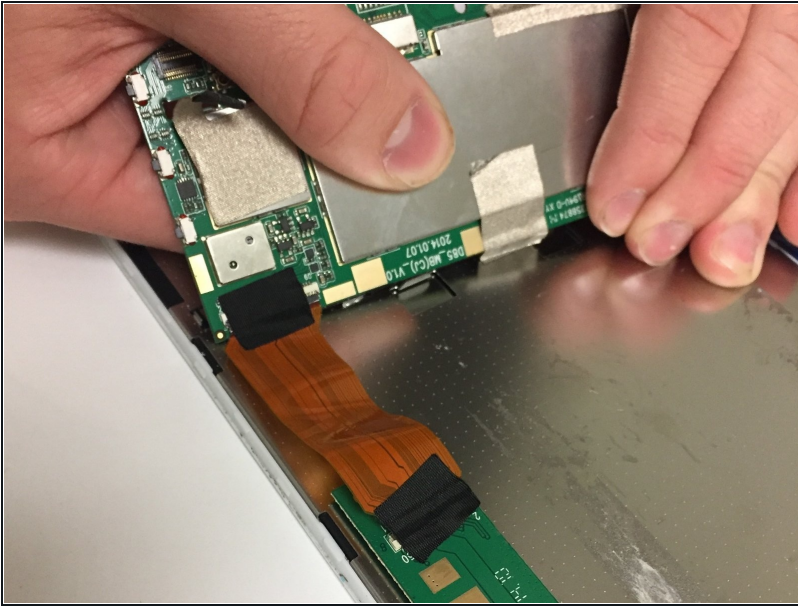
- Peel off the battery from the device and set aside.
- ⓘ The battery is connected to the motherboard by two wires. Be careful not to sever the connection.

Step 7



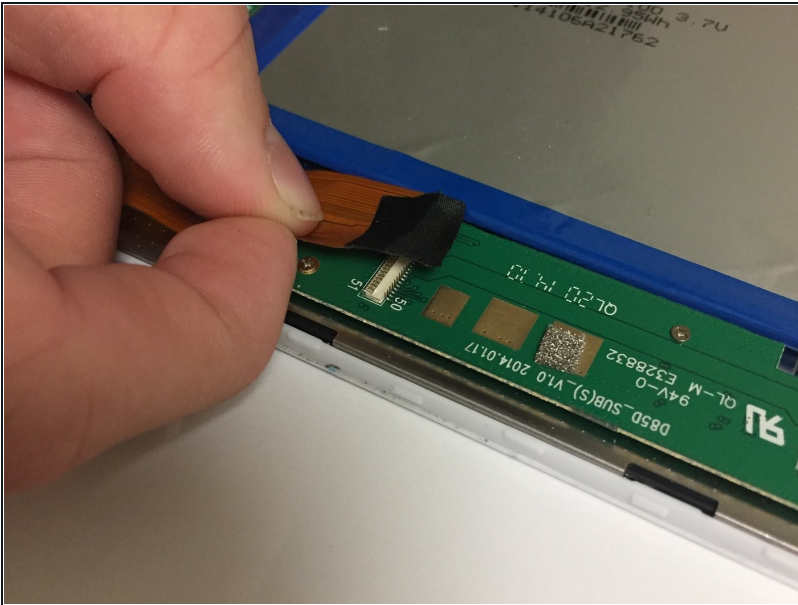
- Using a #000 screwdriver, unscrew the five 4mm and 3 mm screws connecting the top portion of the motherboard to the device.

Step 8



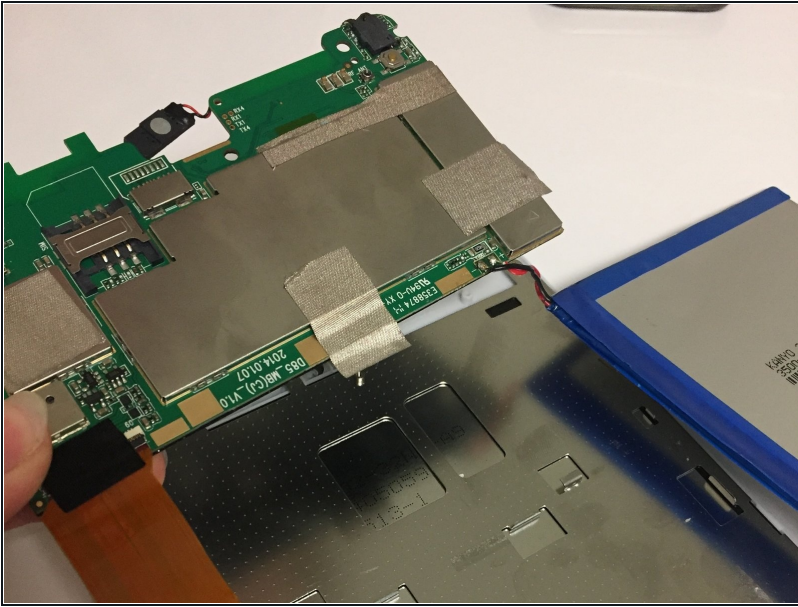
- Disconnect the silver tape that attaches the motherboard to the metal panel.

Step 9



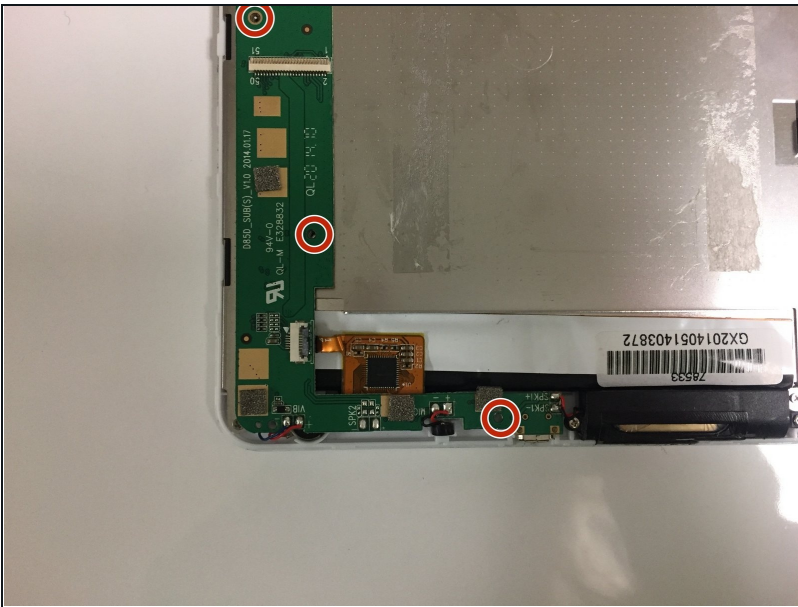
- Disconnect the ribbon from the bottom portion of the motherboard.

Step 10



- Remove the motherboard and set aside.

Step 11



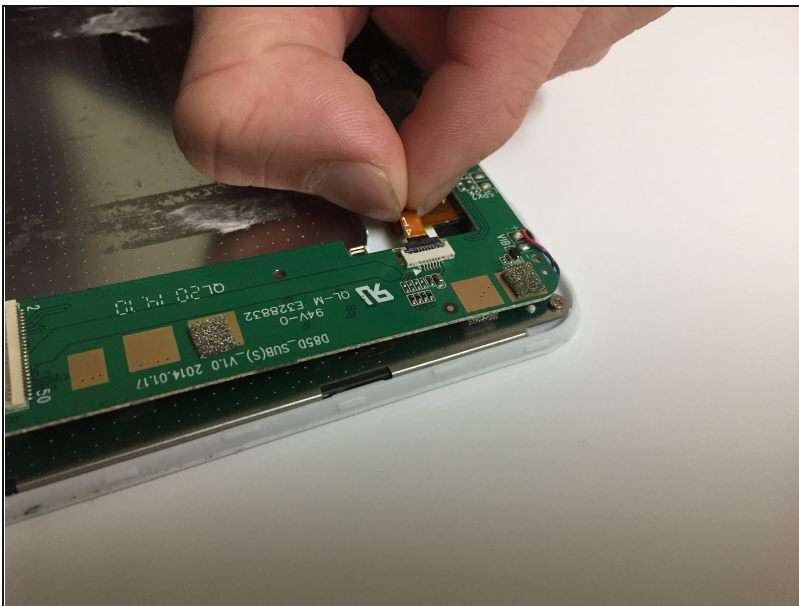
- ① The smaller portion of the motherboard is located at the bottom with the speaker.
- Using a #000 screwdriver, unscrew the three 3 mm screws that fasten the smaller segment of the motherboard to the tablet.

Step 12



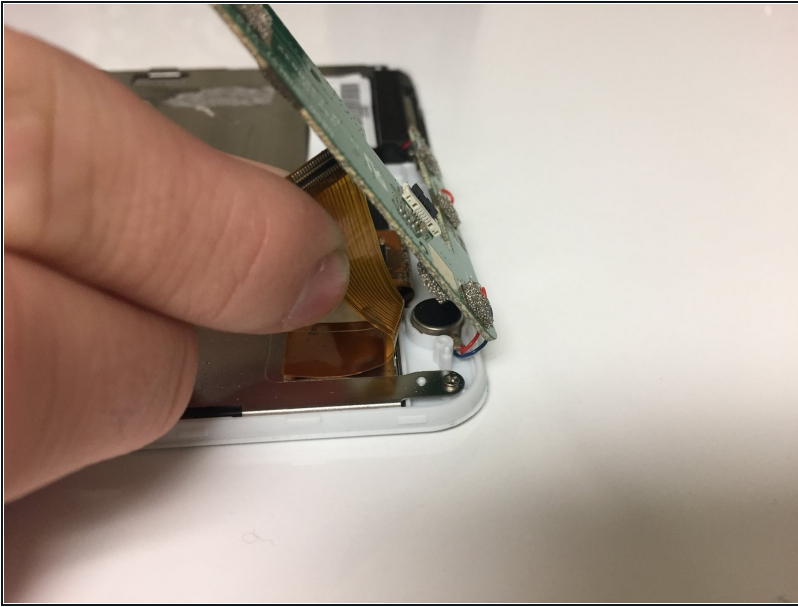
- Located towards the bottom, carefully remove the yellow film.

Step 13



- Gently disconnect the small ribbon found underneath the film.

Step 14



- ① There is another connection found underneath this portion of the motherboard.
- Lifting up the motherboard, disconnect the second ribbon found underneath.

Step 15



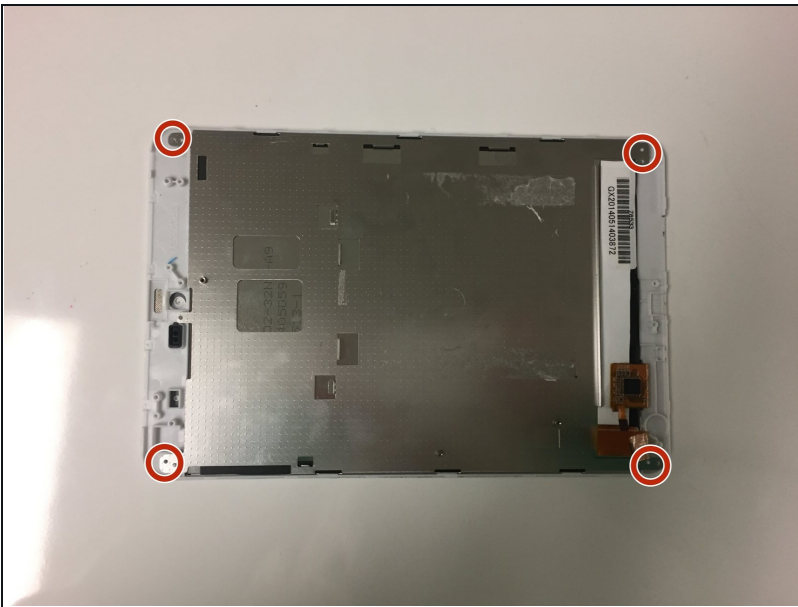
- Unscrew the two 4 mm #000 screws.

Step 16



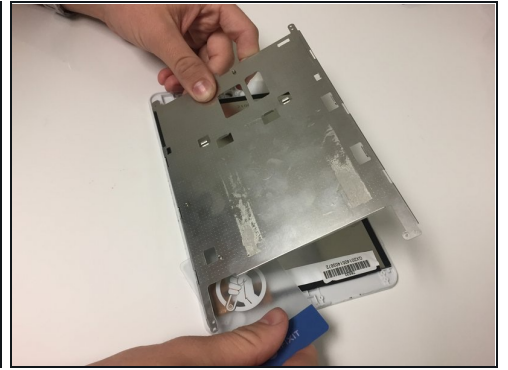
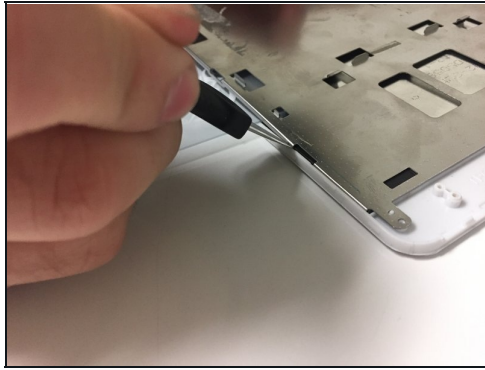
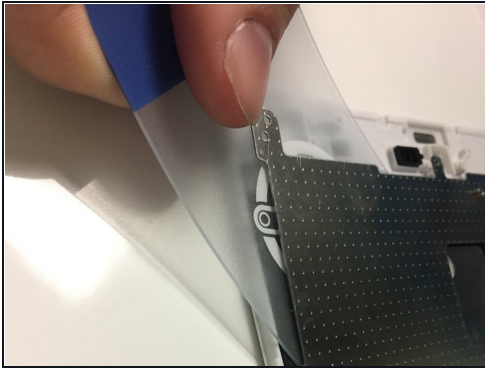
- Remove the speaker and bottom portion of the motherboard.

Step 17



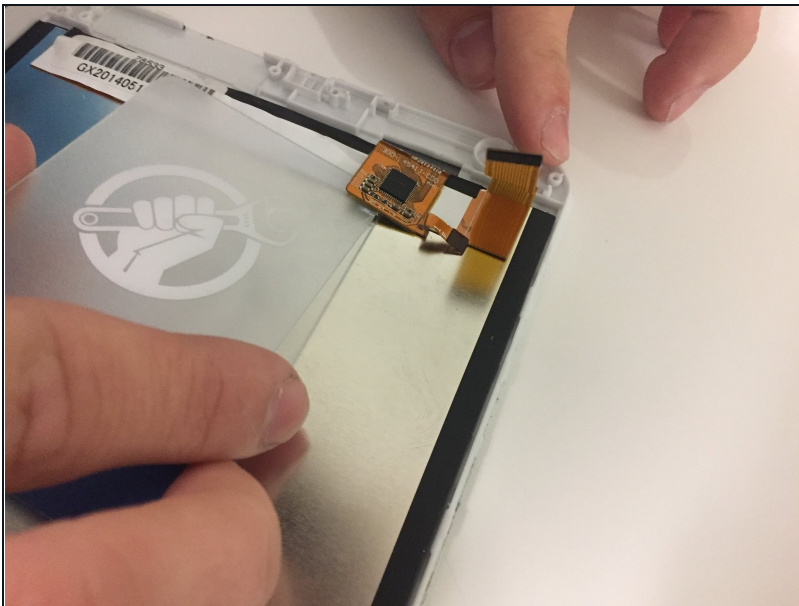
- ① At this stage, almost all inside components should be removed (as shown).
- Using a screwdriver size #000, remove the four 4 mm screws found at each corner of the metal panel if you haven't gotten them already.

Step 18



- Use the plastic card to separate the metal panel from the screen component.

Step 19



- Separate memory card from screen.

Step 20



- Use the plastic card to separate screen component from front panel.

Step 21



- Use the plastic card to separate the glass from the front panel.
- ⓘ Once the glass is removed, the new glass can be fitted to the front panel.

To reassemble your device, follow these instructions in reverse order.