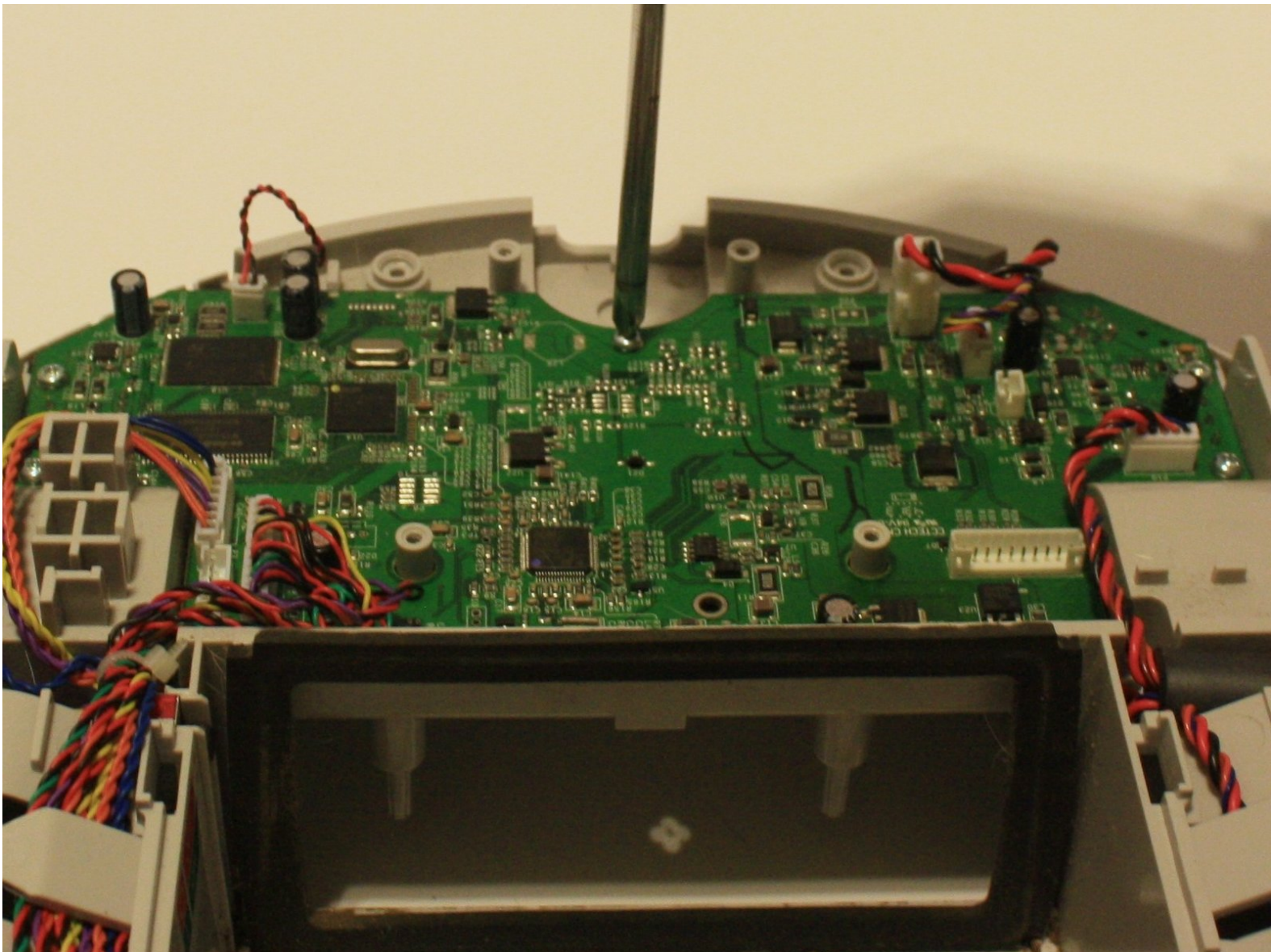




Neato XV-21 Motherboard Replacement

This guide will explain how to access and replace the motherboard.

Written By: Nastassja Klipsch

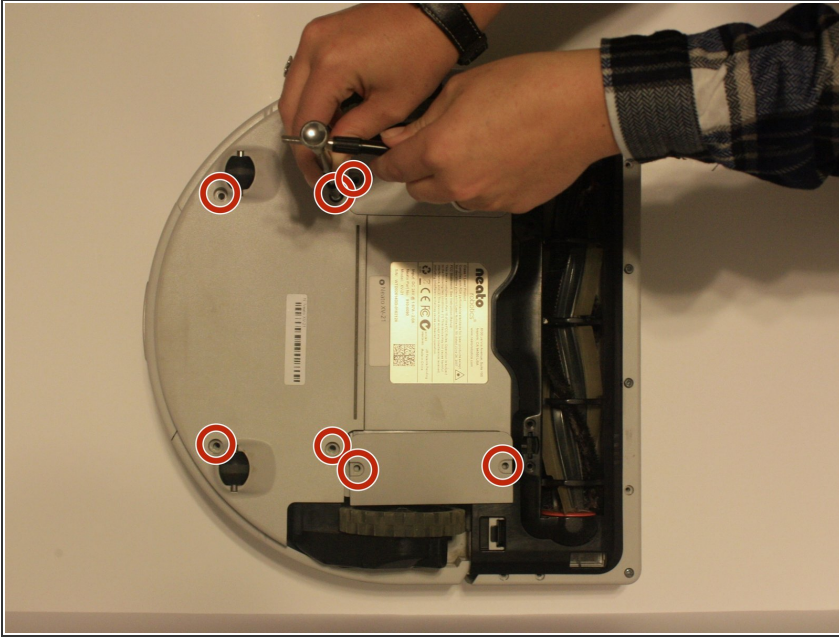




TOOLS:

- [Phillips #0 Screwdriver](#) (1)
-

Step 1 — Back Panels of Neato XV-21



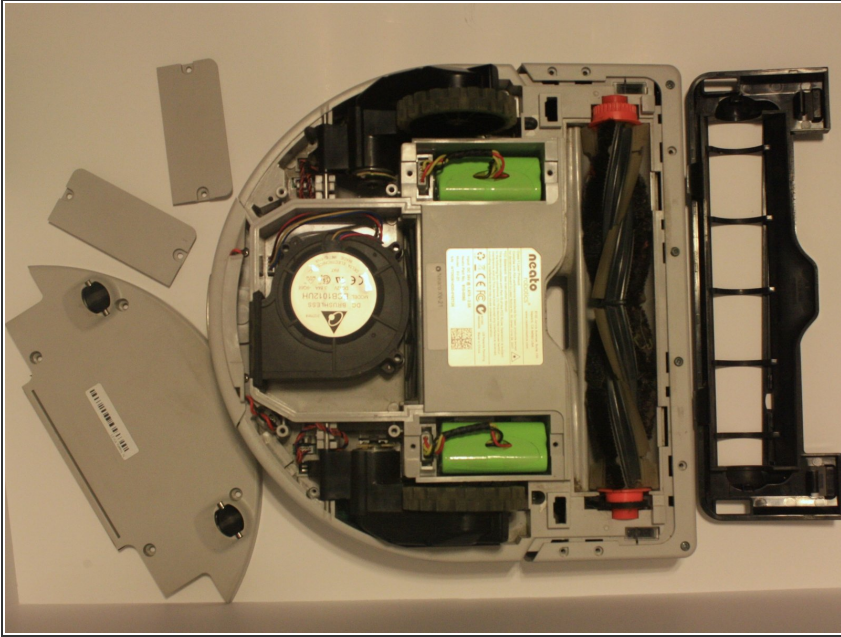
- Flip the Neato on its back so the bottom is exposed
- Unscrew the seven screws.

Step 2



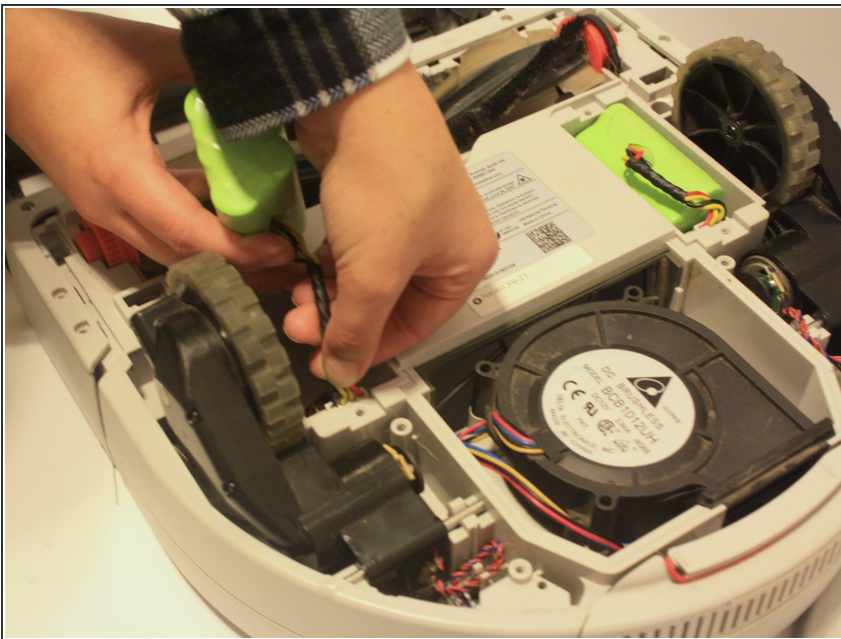
- Lift the panels to reveal the batteries, brush and fan
- ⓘ There should be little to no resistance during this step, do not continue if the pieces do not separate easily

Step 3



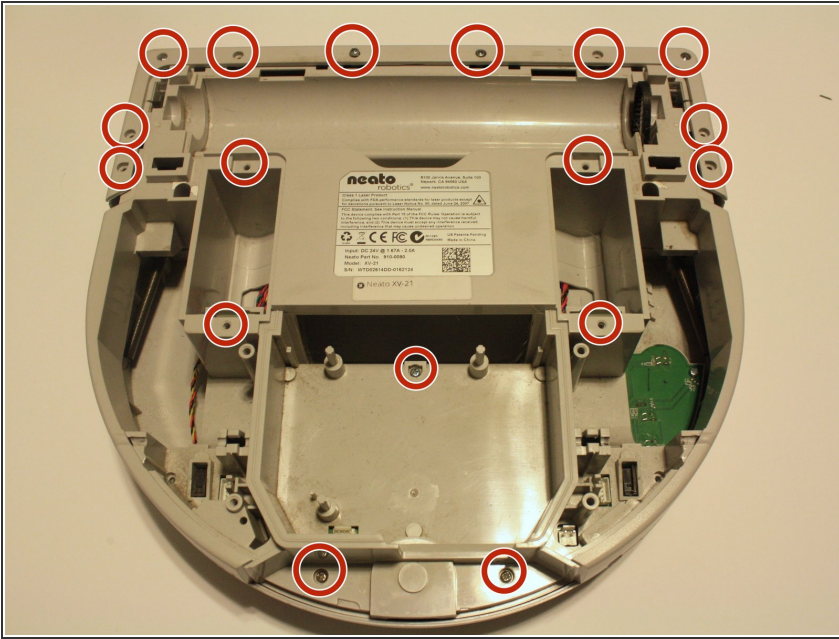
- The Neato's core components are now exposed and ready to be cleaned and/or replaced.

Step 4 — Battery



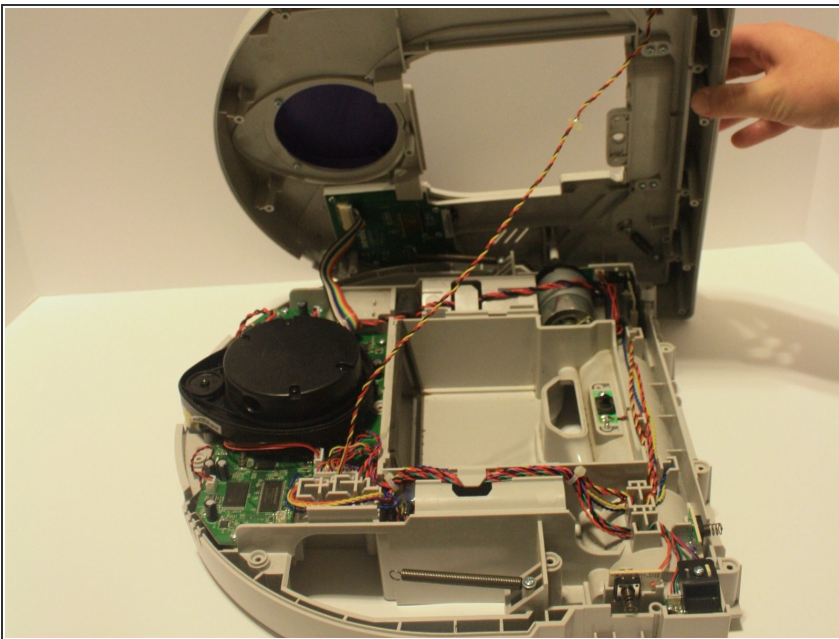
- Pinch and pull the white connector to disconnect the battery from the device
- ⚠ Failure to complete this step could cause electric shock or later complications
- Lift and remove the battery from the cavity
- ⓘ If replacing the battery, make sure to use proper disposal methods.

Step 5 — Lidar Distance Sensor



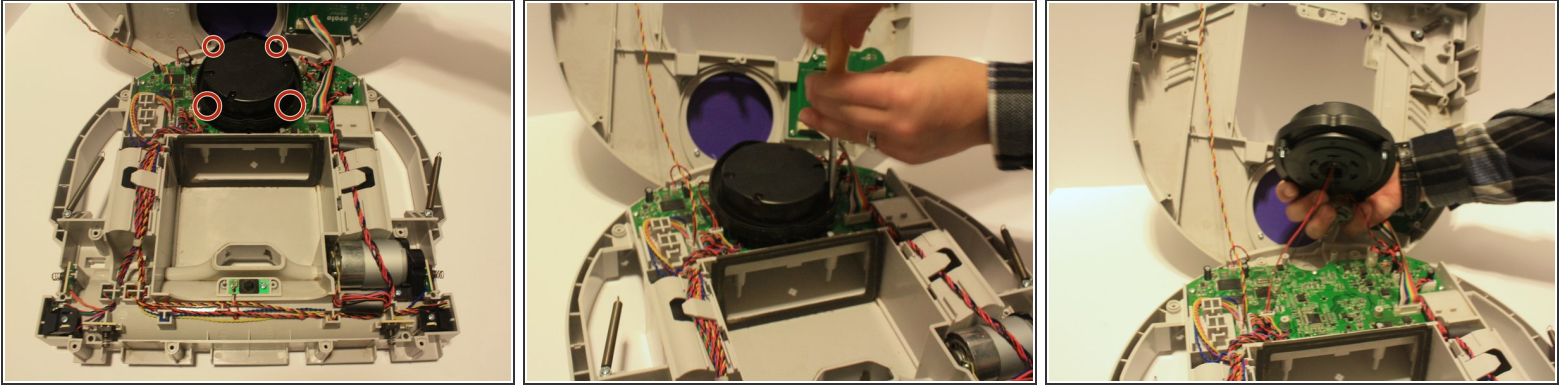
- Remove the 17 visible screws and the 2 covered/hidden screws near the battery compartments that connect the bottom to the top of the Neato robot.

Step 6



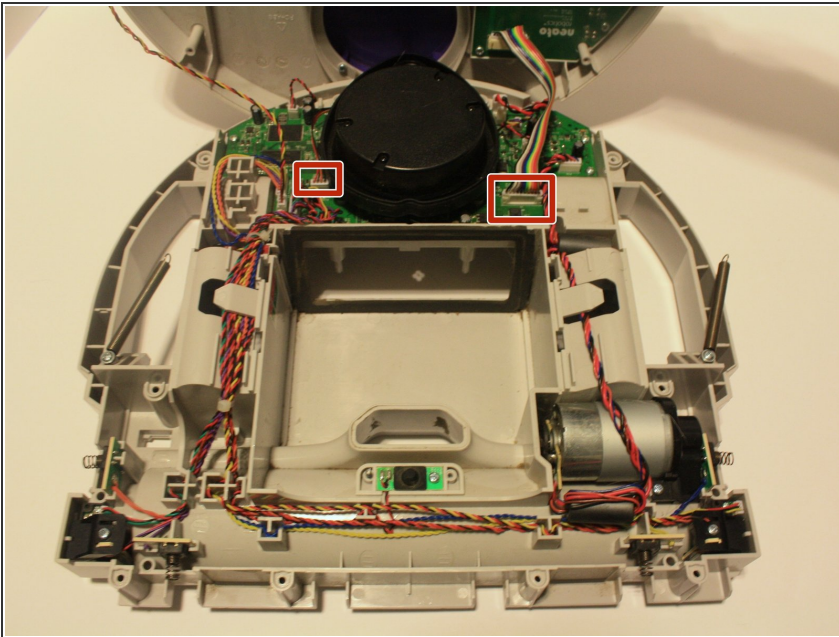
- Lift and separate the two pieces to give access to the Distance Sensor
- ⓘ There may be slight resistance during this step, make sure to lift the pieces straight rather than an angle. Lifting at an angle may cause pieces to catch, causing resistance

Step 7



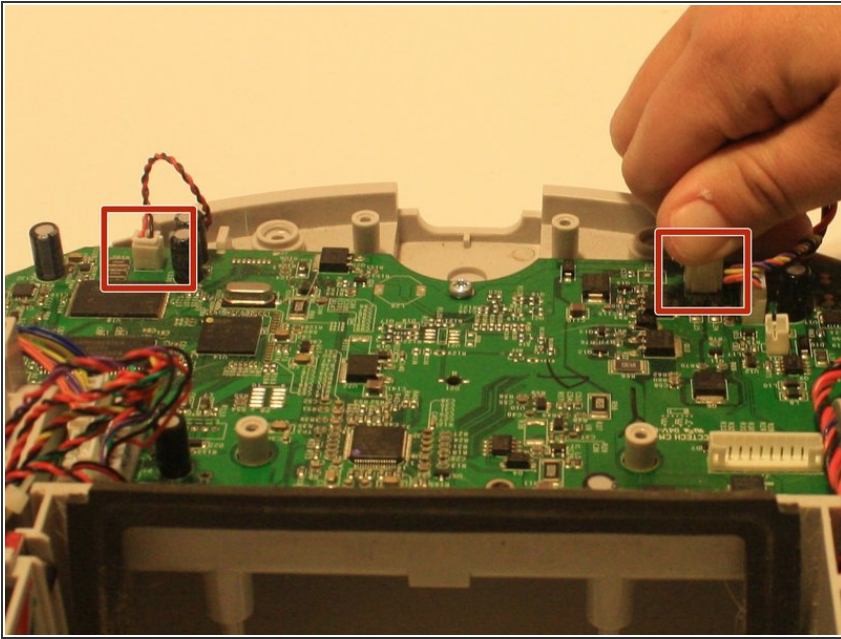
- Remove the four screws on the lidar sensor.
- After the wires are fully disconnected lift the motor away to reveal the motherboard
- ⓘ There should be little to no resistance during this step. Do not continue if there is resistance, this may damage the motherboard

Step 8



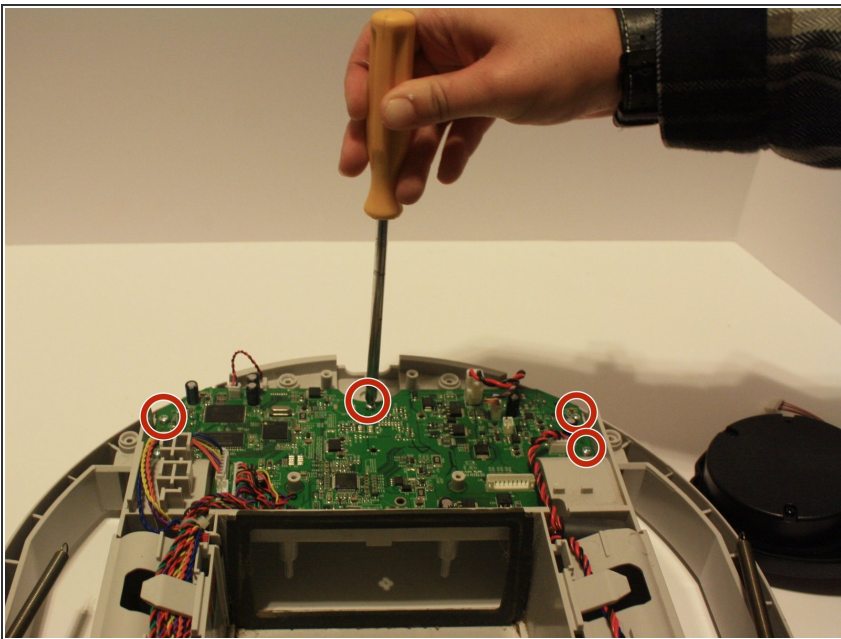
- Pinch and pull the white connectors indicated in the image, this will allow the top and bottom panels to fully separate

Step 9 — Motherboard



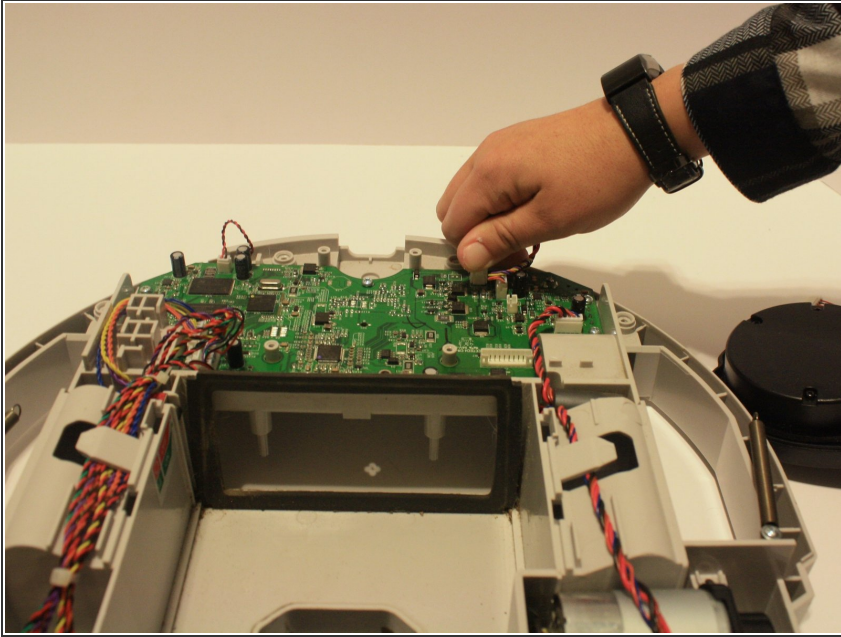
- Pinch and pull the white connectors that connect the LCD screen and motherboard components

Step 10



- Remove the four screws that hold down the motherboard.

Step 11



- Lift motherboard off of the device so that the new motherboard can be connected
- ⓘ There should be little to no resistance during this step. Do not continue if there is resistance, this could cause damage to the motherboard

To reassemble your device, follow these instructions in reverse order.